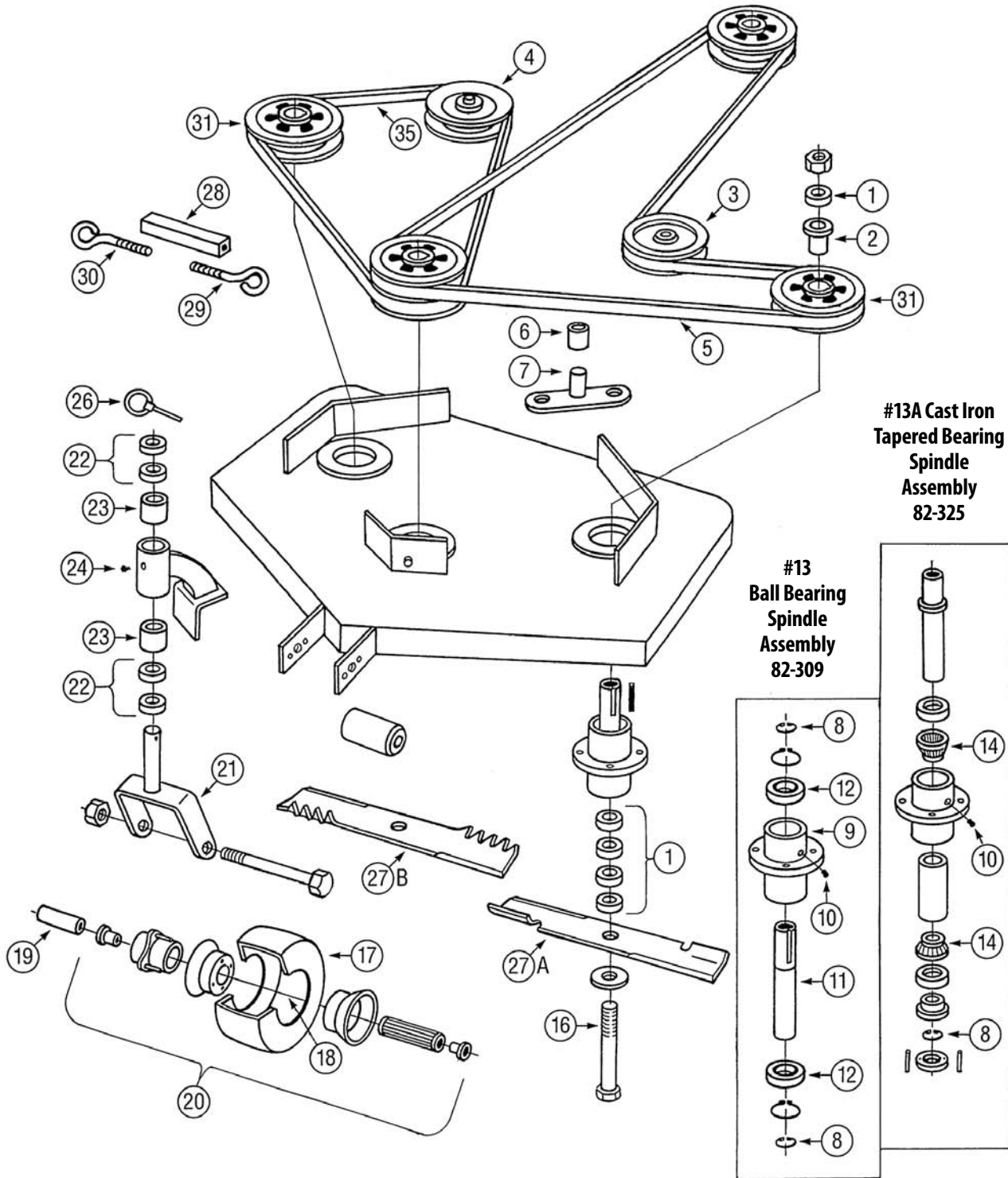


SCAG 36", 48" 52" & 61" HYDRAULIC WALK BEHIND MOWERS



Scag 36", 48" 52" & 61" Hydraulic Walk Behind Mowers

Ref #	Frederick #	OEM #	ASC #	Description
1	48-141	43038		SPACER FOR #13 ASSY
2	78-003	48926		BUSHING 1-1/8 ID FOR PULLEY
3	78-300	48269	49321	IDLER PULLEY
4	78-121	48181	53874	V-BELT IDLER PULLEY
5	75-054	48204		36" DECK DRIVE BELT - 5/8" x 82" 48"
	75-055	48089		DECK - DRIVE BELT - 5/8" x 89-5/8" 52"
	75-058	48286	59136	DECK - DRIVE BELT - 5/8" x 92-5/8"
6	45-125	48100-05		BRONZE BUSHING
7	N/A	N/A		N/A
8	02-496	04050-04		SNAP RING
9	N/A	N/A		N/A
10	02-010-1	48112-02		GREASE FITTING
11	82-305	43001-02		SPINDLE SHAFT
12	45-401	48101-01		HEAVY DUTY BEARING
13	82-309	46020		SPINDLE ASSY-BALL BEARING
13A	82-325		55082	SPINDLE ASSEMBLY
14	45-002	48668	57124	TAPER BEARING
16	04-125	04001-41	55807	BLADE BOLT
17	68-131	48006-02		9 X 350-4 TIRE
18	71-274	48006-03		TIRE TUBE
19	45-188	43022	74066	SPANNER BUSHING
20	72-795	48006-01	51216	COMPLETE ASSEMBLY
21	48-202	45006		CASTER FORK
22	09-804	43037-01		1/2" SPACER
23	45-127	48100-01		BRONZE BEARING "
24	02-010-1	48114-01		GREASE FITTING
26	02-446	04066-01		LINCHPIN 7/16 "
27A	91-620	A48110	34777	BLADE- 32 & 48" CUT
	91-623	A48185	45364	BLADE -36 & 52" CUT "
	91-628	A48304		BLADE-60 & 61" CUT "
	491-620		61971	FUSION® BLADE 32-48 "
	491-623		63348	FUSION® BLADE 36-52 "
	491-626		61972	FUSION® BLADE 60-61 "
27B	90-417			GATOR MULCHER HI-LIFT 32 & 48" CUT "
	90-717			GATOR MULCHER MAGNUM 32 & 48" CUT "
	90-418			GATOR MULCHER HI-LIFT 36" & 52" CUT "
	90-718			GATOR MULCHER MAGNUM 36 & 52" CUT "
	490-718		74382	FUSION® GATOR MAGNUM 36-52 "
28	48-006	43025		TURNBUCKLE
	90-421			HIGH LIFT
	90-721			MAGNUM "
	490-721		73655	MAGNUM w/FUSION®
29	48-071	04070-02		EYEBOLT LH THREADS 5/16-18
30	48-072	0407-01		EYEBOLT RH THREADS 5/16-18
31	78-642	48127-01		DECK PULLEY
35	75-154	48087		BLADE BELT 48 CUT "
	75-048	48285	59817	BLADE BELT 52 CUT "
	75-047	48265	60096	BLADE BELT 61 CUT "

*** NON-Stocked but Previously Special Ordered Item**