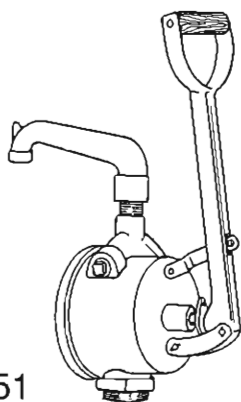


FILL-RITE

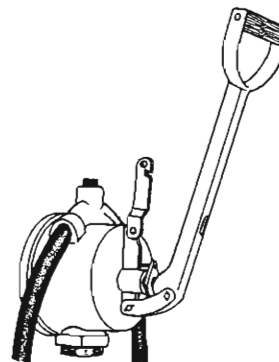
Parts and Technical Service Guide

SERIES 5200 PUMP

For models: 150,F150,F151,F152,F156,F157,F159,160,F160,F161,F162,F166



Model F151



Model F152

OUTSTANDING FEATURES

- 20 gpm / 76 l/min in 100 strokes
- Built in strainer
- Anti-siphon device
- Lightweight cast aluminum
- Easily accessible operating mechanism for cleaning



**TUTHILL
CORPORATION**

**Fill-Rite
Division**

4204 Ferguson Road
Fort Wayne, Indiana USA 46809
Tel 219 747-7524 Fax 219 747-3159 Tlx 272915

Dear Fill-Rite Customer,

Congratulations on your purchase of Fill-Rite's series 5200 piston hand pump. We at Fill-Rite have built our worldwide reputation by designing the finest and most reliable products available in today's market.

The fluid control experts at Fill-Rite have come up with this compact, lightweight portable pump designed for years of troublefree operation. The superiority of our hand pump has been proven by its many years of exemplary service in the field. We have used the most advanced technology possible to give you a pump with the excellence you deserve along with the quality you've come to expect from Fill-Rite products.

George P. Jenkins
President

GENERAL DESCRIPTION

The Fill-Rite series 5200 compact, high flow dual-action piston hand pump can deliver approximately 20 gallons of fluid per minute (100 strokes). This portable lightweight design makes for a long life of trouble-free operation.

OPTIONS

- UL Listed models
- Flow meters in U.S. gallons or litres
- Hoses
- Nozzles
- Discharge Spouts

INSTALLATION INSTRUCTIONS

Use gasoline and oil resistant pipe compound on all threaded joints.

1. Screw suction pipe(F1190) into pump inlet.
2. Screw bung adapter(F1590) into tank opening.
3. Extend suction pipe into tank or barrel.
4. Attach hose and nozzle to pump outlet.

IMPORTANT SAFETY INFORMATION

To ensure safe and efficient operation, it is essential to read and follow each of these warnings and precautions:

1. **Improper use or installation of this product can cause serious bodily injury or death.**
2. Do NOT smoke near pump or use pump near an open flame when pumping flammable fluids. Fire could result.
3. A filter should be used on pump outlet to ensure that no foreign material is transferred to fuel tank.

OPERATING INSTRUCTIONS

1. Reset meter to 0 (if applicable).
2. Insert nozzle into tank (if applicable).
3. Operate handle to begin fluid flow.
4. When finished pumping, allow hose to drain and return nozzle to nozzle boot.

TECHNICAL INFORMATION

Design Features:

- 1" NPT inlet, 3/4" NPT outlet
- Lightweight aluminum die cast body
- Built-in stainless steel strainer and check valve
- Operating mechanism easily accessible for cleaning
- Equipped with vacuum breaker
- Security - handle equipped with bracket for padlocking

Fluid Compatibility

If in doubt about compatibility of a specific fluid, contact supplier of fluid to check for any adverse reactions to the following wetted materials:

Zinc Pltd. Stl.	Nickel Pltd. Stl.	Aluminum	Acetal
300S Stn. Stl.	400S Stn. Stl.	Vellumoid	Teflon
Buna N - All pumps except 150, F151, 160 & F161			
Nylon - F150, F152, F157, F160 & F162 Only			
Ryton - F156, F159 & F166 Only			
Viton - F156, F159 & F166 Only			

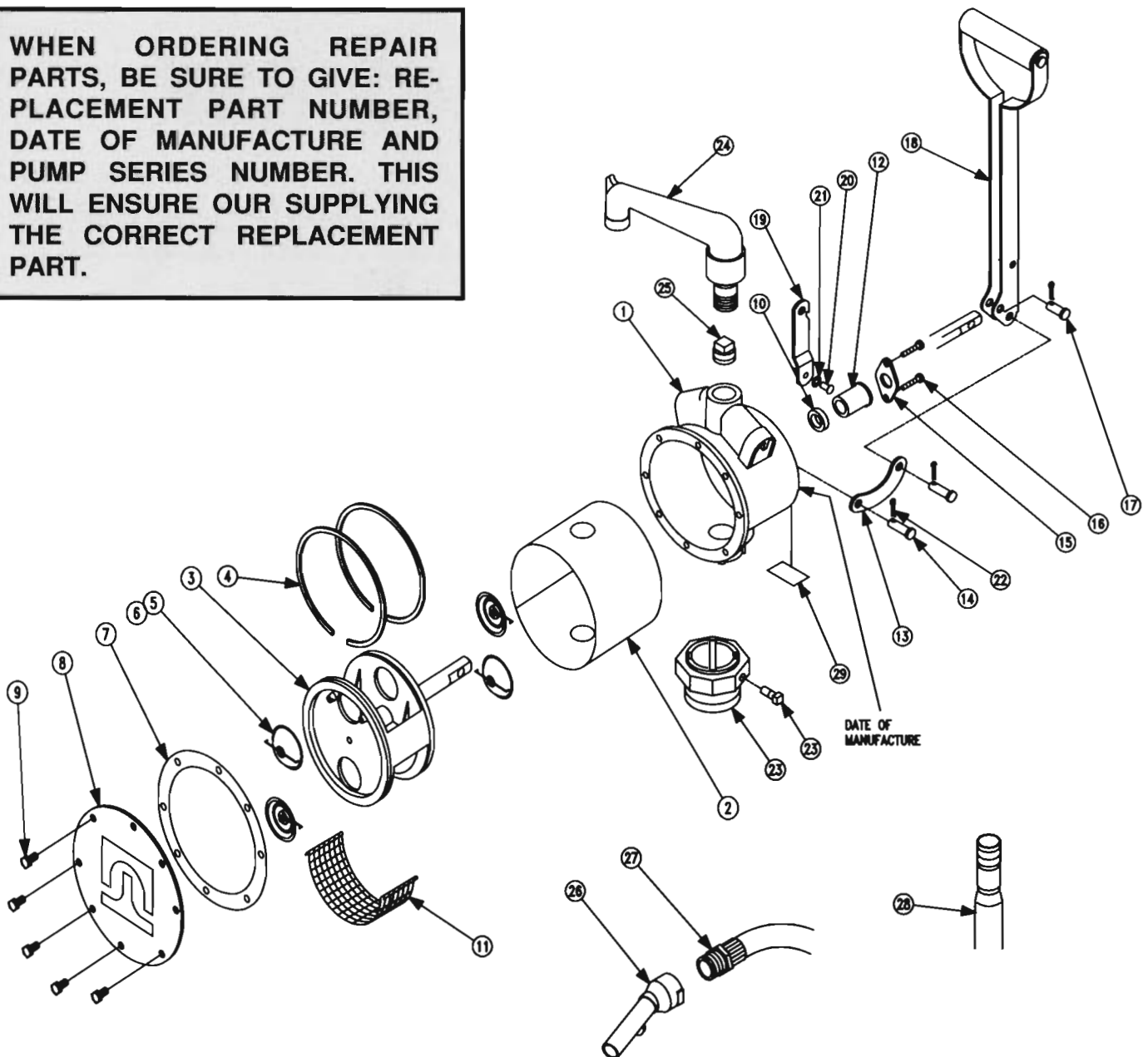
TROUBLESHOOTING GUIDE

PROBLEM	POSSIBLE CAUSE	SOLUTION
Pump will not prime	<ul style="list-style-type: none">· Suction line problem· Valves sticking· Gasket leakage	<ul style="list-style-type: none">· Check for leaks in suction line· Check valves and piston for nicks, burrs or wear· Tighten covers and joints
Low pump capacity	<ul style="list-style-type: none">· Excessive dirt in screen· Suction line problem	<ul style="list-style-type: none">· Remove and clean screen· Check for leaks in suction line
Pump fluid leakage	<ul style="list-style-type: none">· Worn Packing· Bad packing· Bad vacuum breaker· Gasket leakage	<ul style="list-style-type: none">· Tighten bearing plate screws· Replace packing· Replace vacuum breaker· Tighten covers and joints

SERIES 5200 PUMP PARTS LIST

ITEM NO.	OLD PART NO.	NEW PART NO.	DESCRIPTION	QTY	ITEM NO.	OLD PART NO.	NEW PART NO.	DESCRIPTION	QTY
1	150-2	F1210	Body	1	17	150-25	F1370	Clevis Pin (Shaft)	1
2	150-32	F1420	Body Liner	1	18	150-26	F1376	Handle Assy	1
3	150-9	F1230	Piston and Shaft Assy	1	19	150-39	F1460	Locking Link	1
4	150-12	F1260	Piston Ring	2	20	150-31	F1410	Rivet	1
5	150-13	F1262	Valve Assy	4	21	150-36	F1440	Tension Washer	1
6	150-16	F1280	Spring Holder (Incl. w/it. 5)	4	22	702-22	F3330	3/32 X 1/2 Cotter Pin	3
7	150-17	F1290	Cover Gasket	1	23	151-7	F1590	Barrel Bung	1
8	150-18	F1300	Cover	1	24	151-12A	F1619	Discharge Spout Assy	1 Opt.
9	150-40	F1470	1/4-20 X 1/2 Screw	8	25	151-109	F1869	Vacuum Breaker	1
10	150-19	F1310	Packing (2 rings per set)	1	26	151-114	F1790	Nozzle	1
11	150-20	F1320	Screen	1	27	151-35	F1750	8' Hose	1
12	150-21	F1330	Bearing	1	151-113	F1752	8' Hose - UL Listed	1 Opt.	
13	150-22	F1340	Link	2	28	151-98S	F1839	Suction Pipe - Telescoping	1
14	150-23	F1350	Clevis Pin (Link)	2	29			5200S Nameplate	1
15	150-24	F1360	Bearing Plate	1		151-84	F1828	Series 5200 Repair Kit (Incl. its. 4,5,7,10,11,12 & 25)	Opt.
16	150-41	F1480	#10-24 X 1 Machine Screw	2					

WHEN ORDERING REPAIR PARTS, BE SURE TO GIVE: REPLACEMENT PART NUMBER, DATE OF MANUFACTURE AND PUMP SERIES NUMBER. THIS WILL ENSURE OUR SUPPLYING THE CORRECT REPLACEMENT PART.



Fill-Rite: A Worldwide Reputation for Reliability.

For over 40 years, people all over the world who have needed tough, dependable pumps have insisted on Fill-Rite products. For them, Fill-Rite has been "the reliable red pump" that keeps on working even under the toughest of conditions. We're proud of the reputation our hand pumps, DC and AC pumps and meters have earned. Today they're only a part of the rapidly expanding Fill-Rite line.

Applying the science of fluid transfer.

An active research and development program is the centerpiece of our ongoing commitment to respond to new fluid transfer opportunities. This has led to new products and to new technologies and new facilities to produce these products.

To bring this advanced technology to market, we have invested in precision engineering and testing equipment. This improves our ability to produce fluid handling equipment that meets market demands for quality, performance and price.

A hard working support network.

Just as important as these capabilities are the people behind them - our design and production personnel. They give you the ability to specify systems that meet the most challenging of applications. With them, you can be assured of prompt, intelligent answers to your fluid transfer questions.

To service customers in the field, we've put together a select, well-monitored team of distributors. Throughout the world, they are ready to help you with technical advice, ordering and delivery.

Fill-Rite will always stand for reliable red pumps and fluid handling equipment. We'll continue to develop new products and production techniques to keep pace with ever changing technologies. Each of our products will always be made with the same care and quality that made our pumps famous.

Fill-Rite Division of Tuthill Corporation ("Manufacturer") warrants to each buyer of its products (the "Buyer") for a period of 12 months from date of installation but in no event more than 18 months from date of manufacture that goods of its manufacture ("Goods") will be free from defects of material and workmanship. Manufacturer's sole obligation under the foregoing warranties will be limited to either, at Manufacturer's option, replacing or repairing defective goods (Subject to limitations hereinafter provided) or refunding the purchase price for such goods theretofore paid by the buyer, and buyer's exclusive remedy for breach of any such warranties will be enforcement of such obligations of Manufacturer. If Manufacturer so requests the return of the goods, the goods will be redelivered to Manufacturer in accordance with Manufacturer's instructions F.O.B. Factory. If Manufacturer elects to repair defective goods and written notice of defects is given to Manufacturer during the warranty period specified above and within 90 days from date of installation then Manufacturer will provide at its cost the services of an authorized representative for on-site repair of defective goods. If such notice shall be given after such 90 days all service costs incurred in the repair or replacement of defective goods shall be the responsibility of the buyer. The remedies contained herein shall constitute the sole recourse of the

Buyer against Manufacturer for breach of warranty. IN NO EVENT SHALL MANUFACTURER BE LIABLE FOR CONSEQUENTIAL DAMAGES NOR SHALL MANUFACTURER'S LIABILITY ON ANY CLAIM FOR DAMAGES ARISING OUT OF THE MANUFACTURE, SALE, DELIVERY OR USE OF THE GOODS EXCEED THE PURCHASE PRICE OF THE GOODS.

The foregoing warranties will not extend to Goods subjected to misuse, neglect, accident or improper installation or maintenance or which have been altered or repaired by anyone other than Manufacturer or its authorized representative.

PRODUCT WARRANTY

THE FOREGOING WARRANTIES ARE EXCLUSIVE AND IN LIEU OF ALL OTHER WARRANTIES OF MERCHANTABILITY, FITNESS FOR PURPOSE AND OF ANY OTHER TYPE, WHETHER EXPRESS OR IMPLIED.

No person may vary the foregoing warranties and remedies except in a writing signed by a duly authorized officer of Manufacturer. Warranties or remedies that differ from the foregoing shall not otherwise be binding on Manufacturer. The buyer's acceptance of delivery of the Goods constitutes acceptance of the foregoing warranties and remedies, and all conditions and limitations thereof.

FILLRITE



**TUTHILL
CORPORATION**

**Fill-Rite
Division**

4204 Ferguson Road
Fort Wayne, Indiana USA 46809
Tel 219 747-7524 Fax 219 747-3159 Tlx 272915