

4117684

2 pgs



# INSTRUCTIONS

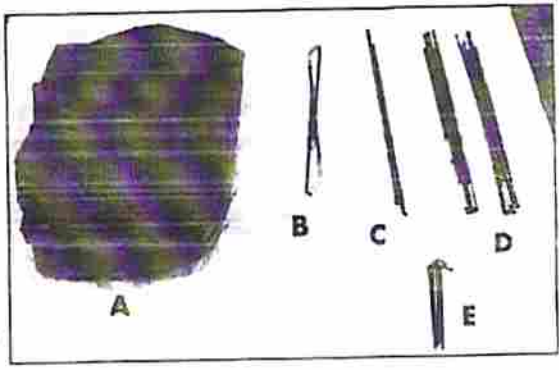
## Item 01102 Riverstone Square Dome Tent

Thank you for purchasing this Texsport tent. Please read and understand each step of the set-up instructions. We encourage you to set-up this tent at least once prior to your camping trip, ensuring that you have a satisfactory understanding of the set-up process. We hope you enjoy your new tent and that it will give you many years of camping pleasure.

**Do not apply excessive force to this product.**

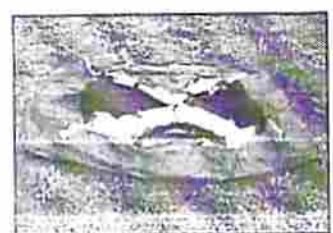
### PARTS LIST:

- A .....Tent skin
- B .....Fly awning pole
- C .....Fly pole
- D .....2 Sets of tent poles
- E .....Stakes



### NOTE:

Prepare your camp site by removing all sharp stones, twigs, etc. The site should be flat and have no depressions that could collect rain water.



STEP 1 - Spread out tent skin.



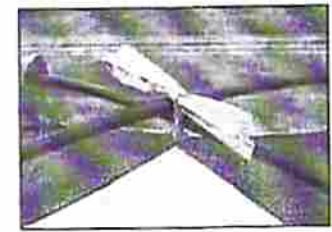
STEP 2 - Assemble the tent poles (D) and insert through the tent sleeves.



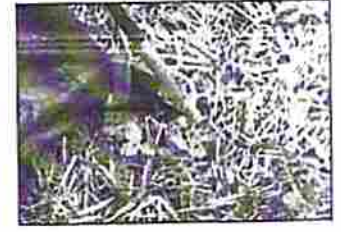
STEP 3 - Your poles should form an X as shown above.



STEP 4 - Insert the pin and ring into the tent poles on all 4 corners.



STEP 5 - Tie poles at the top of the tent.



STEP 6 - Stake down at the ring.



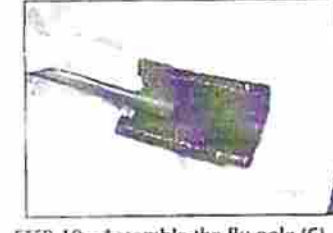
STEP 7 - This is what your tent should look like to this point.



STEP 8 - Spread out the fly bottom side up.



STEP 9 - Assemble fly awning pole (B) and push through the fly sleeve.



STEP 10 - Assemble the fly pole (C) and insert into web pockets.



STEP 11 - Tie pole to the fly skin to secure.



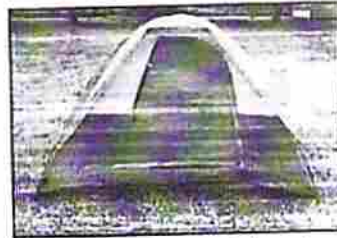
STEP 12 - Drape fly over tent and insert the awning pole into the grommets on tent skin to create an arch.



**STEP 13 - Secure fly by attaching fly hook to ring.**



**STEP 14 - Fasten velcro to poles.**



**STEP 15 - Your assembled tent is now ready.**

**WARNING:**

Texsport tent fabrics are flame retardant treated per C.P.A.I.-B4 specifications. However, for your safety, we recommend that **NO OPEN FLAME BE USED IN OR NEAR YOUR SHOWER/SHELTER.**

**SOME ADDITIONAL INFORMATION:**

Make sure you stake the tent (with the tent stakes included) in windy weather, or if you anticipate afternoon winds coming up while you are away from your campsite. Stake one corner, then stake each consecutive corner in a clockwise rotation. Make sure the tent remains tight. Always place your tent a safe distance from your campfire - unstaked tent placed upwind of the fire can be blown into the fire. Shower/shelter placed downwind of the fire are often showered with tiny sparks that can burn holes into the lightweight fabrics of your tent.

**WATERPROOFING YOUR TENT:**

Texsport tents are made from coated water-repellent fabrics. However, the sewing process, necessary in all tent fabrication, can cause water leakage where the sewing needles have perforated the fabric in the seams. Without treatment the tent will leak. Every new tent needs to be seam sealed to make it water tight. We recommend using Texsport Spray Waterproofing/Seam Sealer which may be found at your local outdoor outfitter or camping store.

**TENT STAKES:**

All tents should be staked down. The stakes supplied with your tent are effective for most conditions, however, specialized stakes are recommended in certain cases:

- a. Sand Stakes: Long broad stakes designed to hold in loose sand
- b. Steel Stakes: Most effective in hard, rocky or frozen soil. These can rust and their sharp edges could damage the tent if stored with the tent. In extremely hard soil a steel rod can be used to make the starter hole.
- c. Shower Stakes: Lightweight, but less holding power than the standard stakes.
- d. Snow Stakes: The most common method is to bury objects with a great deal of surface area in the snow (i.e. branches, aluminum pie plates, stuff sacks or tent bags filled with snow and buried. This may be referred to as the dead man method). Shower/shelters can also be secured to snow (i.e. or poles which are stuck into the snow).

**ZIPPERS:**

If zippers stick, lubricate with silicone. Never force a zipper which has material caught in it, as this will bend the slider and prevent the zipper from closing. Continual use in a sandy environment can cause the slider to erode and fail to close the zipper.

**STORAGE:**

Shower/shelters should be stored dry and loosely folded, away from heat and water. Keep out of reach of mice as they like to nest in tents. Never store directly on concrete, as moisture and chemicals in concrete may damage the nylon.

**WASHING:**

Hand wash with a sponge, using a mild soap. Never use detergents or washing machines as they may damage the coating or seams. re-assemble to use seam sealer once tent had been washed to insure waterproofing.

**HOW LONG WILL A NYLON TENT LAST?**

Various conditions will affect the length of service which you receive:

- a. A nylon tent which is left erected all summer may last only one or two seasons, as the sun's ultra-violet rays damage the nylon.
- b. Never store a tent wet or damp, as mildew may develop. It will not harm nylon, however, mildew is unsightly and may damage other parts of the tent (i.e. zipper tapes).

Avoid spraying insect repellent or hair sprays, etc. on tent fabric as they may be harmful.

**REPAIR:**

For small tears use an adhesive backed rip-stop nylon patch. We recommend Texsport Nylon Shower/shelter Repair Kit which may be found at your local outdoor outfitter or camping store.

**QUESTIONS:**

If you should have any questions, problems or comments, please call our Customer Service Department at 1-800-231-1402 or e-mail [info@texsport.com](mailto:info@texsport.com). This Department is open M-F from 8 a.m. - 5 p.m. CST.

ASC 11 1494  
4 pgs.

### IMPORTANT

Read this manual carefully before assembling, using or servicing this stove  
**Keep this manual for future reference.**

### FOR YOUR SAFETY - IF YOU SMELL GAS

- Do not attempt to light the appliance.
- Extinguish any open flame.
- Disconnect from fuel supply.
- If smell persists leave the area.

### ! DANGER !

#### CARBON MONOXIDE HAZARD

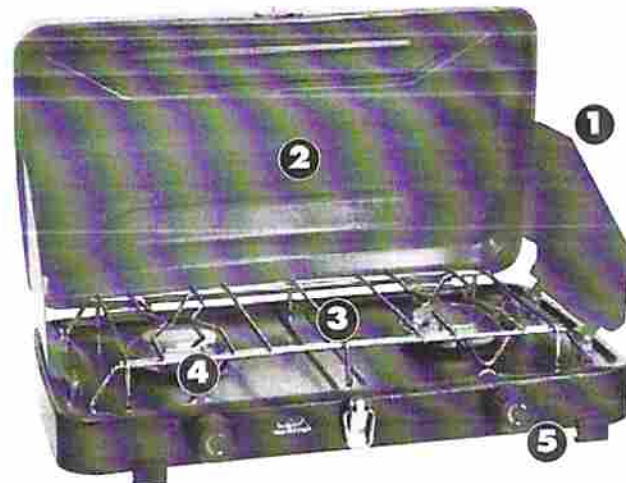
- This appliance can produce carbon monoxide which has no odor.
- Using it in an enclosed space can kill you.
- Never use this appliance in an enclosed space such as camper, tent, car or home.

### ! WARNING !

Misuse of this stove can lead to fire, explosion and serious  
Personal injury to you or others. Follow all instructions provided.

### CONTACT INFORMATION

If you should have any questions, problems or comments, please call our  
Customer Service Department at 1-800-231-1402.  
This Department is open from 8 AM-5 PM CST. M-F. [www.texsport.com](http://www.texsport.com).



1. Wind shields
2. Cover
3. Grill
4. Burner
5. Control Knobs

Thank you for buying a Texsport Authentic Adventure Gear product. We hope you enjoy your new propane appliance and that it will serve you for many years to come. We encourage you to read and understand each step of the set-up and safety operation instructions prior to working with this propane appliance.

## **FOR OUTDOOR USE ONLY**

### **GENERAL SAFETY INFORMATION**

- NEVER use in an enclosed area.
- DO NOT use stove while sleeping.
- DO NOT expose the propane cylinder to excessive heat.
- Never operate stove with missing or damaged parts or mantles.
- Always inspect stove, propane cylinder and connections for damage, debris or dirt before attaching the stove to the propane cylinder.
- DO NOT USE AS A SPACE HEATER.
- Always attach/detach propane cylinder outdoors away from any open flame or pilot lights and only when the stove is cool.
- When storing or transporting stove, always disconnect the propane cylinder and store it in a cool, well ventilated location, in an upright position.
- Be sure connection to propane cylinder is tightly secure (hand tighten only) prior to each use.
- Never operate the stove near any flammable liquid or vapors. Keep all flammable or combustible materials beyond the clearance zone as indicated on the back panel of this booklet.
- Discontinue operation and close valve if:
  - ambient temperature drops below -10° F.
  - there is no fuel remaining in the propane cylinder
  - combustion becomes unstable
  - lighting cannot be performed quickly and easily
  - you experience repeated flame outs
- Never leave stove unattended when hot or in use.
- KEEP OUT OF REACH OF CHILDREN.

---


## **INSTRUCTIONS FOR USE**

### **CONNECTING THE FUEL SOURCE – ASSEMBLE OUTDOORS**

Step 1.....Only use the approved 16.4 oz/465 g disposable propane cylinder approved for use by the United States Department of Transportation DOT-NRC 232/290 M1110.

Step 2.....Make sure that the burner control valve knobs is turned off. Twist in a clockwise direction. 

Step 3.....Make sure regulator assembly rubber seal is clean and undamaged and in its proper centered position.

Step 4 .....Attach the propane cylinder onto the regulator assembly (hand tighten only). Insert tube into the inlet housing on the right side of the stove. Insert the tube fully into the inlet and turn the collar clockwise  to tighten. (When installed correctly the propane cylinder and regulator and tube assembly will slant slightly toward you. The propane cylinder does not rest flat on the surface).

Step 5.....Please check all connections for leaks using soapy water. Bubbles will form if there is a leak present.

**DO YOU SMELL GAS? IF YES, THERE IS A LEAK.**

**IS THE CONNECTION AREA EXTREMELY COLD?  
IF SO, THERE IS A LEAK!**

**DO NOT USE STOVE IF IT IS LEAKING.**

Step 6 .....When you are sure there are no leaks, you may proceed to setup/lighting your stove.

### **SETUP/LIGHTING YOUR STOVE**

Step 1 .....Open case cover assembly and position two side windshields by inserting notched supports into the cover.

Step 2 .....Place a flame source near the face of the burner and at the same time open the control valve to a low or medium setting. Gas will begin to flow and the burner will ignite.

Step 3 .....If stove fails to light, turn off the valve. Allow any gas to dissipate and check for a fuel blockage while following all the safety instructions listed.

Step 4 .....Repeat above instructions for lighting.

### **USING YOUR STOVE**

Step 1 .....After burner has ignited, adjust to desired heat level.

Step 2.....Keep children, pets and flammable materials well away from ignited burner.

Step 3.....While ignited DO NOT touch the cooking area. Only the control knob should be touched during operation.

Step 4.....Stove surface is very hot and should not be handled or moved, except after being shut down.

Step 5.....Allow stove to cool for 15 minutes before moving or storage.

## **MAINTENANCE**

Be sure to keep equipment clean and make sure burner is always unobstructed. Propane appliances seldom require service as long as you keep valves and orifices away from dirt and dust. Always blow the valve clean before connecting it to a cylinder.

**IF DAMAGED DO NOT USE THE APPLIANCE AND CONTACT TEXSPORT CUSTOMER SERVICE @ 800-231-1402 8AM TO 5PM CST MON-FRI.**

**DO NOT PERFORM MAINTENANCE WHILE THE STOVE IS STILL HOT.  
PLEASE ALLOW ADEQUATE TIME TO COOL.  
MINIMUM CLEARANCE TO FLAMMABLES OR COMBUSTIBLES**

Please keep all combustible and/or flammable materials away from the stove at a minimum distance of 12" from the sides and 48" from above.



## **ONE YEAR LIMITED WARRANTY!**

Texsport warrants to the original consumer purchaser that this stove is free from defects in materials and workmanship for a period of one (1) year from the date of purchase. All implied warranties relating to this product, including without limitation, the warranties of merchantability and fitness for a particular purchase, are also limited in duration to one (1) year from the date of purchase. Some states do not allow limitations on how long an implied warranty lasts, so the above limitations may not apply to you. This warranty extends to the original consumer purchaser only and does not extend to subsequent purchasers or other transferees. This warranty does not cover damage for wear and tear, abuse, improper use or alteration and it is the sole express warranty relating to this product. Call the Texsport Consumer Relations Department at 1-800-231-1402, a sales receipt with date of original purchase is required and must accompany the return of the defective product. THERE IS HEREBY EXCLUDED FROM THIS WARRANTY ANY LIABILITY FOR INCIDENTAL, CONSEQUENTIAL, SPECIAL, INDIRECT, PUNITIVE OR EXEMPLARY DAMAGES OR LOST PROFITS RESULTING FROM ANY BREACH OF THIS WARRANTY OR OTHERWISE. Some states do not allow the exclusion may not apply to you. This warranty gives you specific legal right, and you may also have other rights which vary from state to state.

#14214

**NOTE: THIS IS NOT A WARRANTY REGISTRATION CARD**