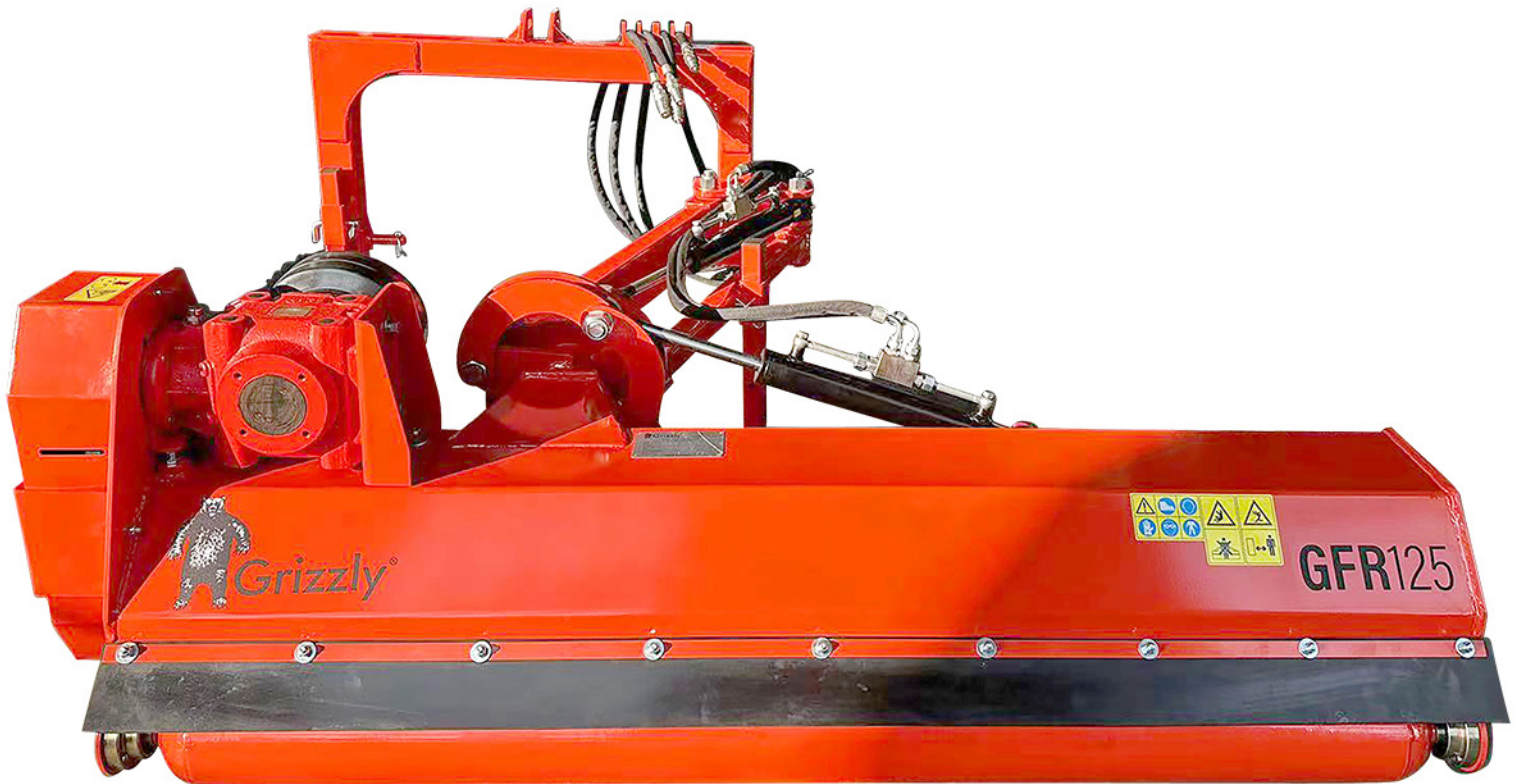


# Grizzly® Flail Mower

GFR Series

## Operation Manual

ASC#133577



# Grizzly®

*Read and understand this manual to safely operate and maintain this product.*



# Table of Contents

---

**Important Safety Information . . . . . 3**

Safety at All Times . . . . . 3

Look For The Safety Alert Symbol . . . . . 3

Safety Labels . . . . . 6

**Introduction . . . . . 9**

Application . . . . . 9

Using This Manual . . . . . 9

Terminology . . . . . 9

Definitions . . . . . 9

Serial Number Plate . . . . . 9

**Section 1: Assembly and Set-up . . . . . 10**

Tractor Requirements . . . . . 10

Assembly . . . . . 10

Tractor Hook-Up . . . . . 10

Driveline Installation . . . . . 10

**Section 2: Operating Instructions . . . . . 11**

Transporting . . . . . 11

Mowing Instructions . . . . . 11

Operating Instructions . . . . . 11

**Section 3: Adjustments . . . . . 12**

Leveling the Mower . . . . . 12

Cutting Height Adjustment . . . . . 12

3-Point Hitch Adjustments . . . . . 12

Belt Tension . . . . . 12

**Section 4: Maintenance and Lubrication . . . . . 13**

Maintenance . . . . . 13

Knife Replacement . . . . . 13

V-Belt Installation . . . . . 13

Storage . . . . . 13

Lubrication . . . . . 14

Driveline Shaft U-Joints . . . . . 14

Roller Bearing (Both Ends) . . . . . 14

Cutter Rotor Bearing (Both Ends) . . . . . 14

Gearbox . . . . . 14

Driveline Profiles . . . . . 14

**Section 5: Specifications & Capacities . . . . . 15**

**Section 6: Troubleshooting . . . . . 16**

**Section 7: Appendix . . . . . 17**

Bolt Torque . . . . . 17

Warranty . . . . . 18

**Section 8: Parts illustration . . . . . 19**

Parts List . . . . . 20

# Important Safety information

---

## Safety at all times

**Thoroughly read and understand the instructions given in this manual before operation. Refer to the “Safety Decal”, read all instructions noted on them.**

Do not allow anyone to operate this equipment who has not fully read and comprehended this manual and who has not been properly trained in the safe operation of the equipment.

- Operator should be familiar with all functions of the unit.
- Operate implement from the driver’s seat only.
- Make sure all guards and shields are in place and secured before operating the implement.
- Do not leave tractor or implement unattended with engine running.
- Dismounting from a moving tractor could cause serious injury or death.
- Do not stand between tractor and implement during hitching.
- Keep hands, feet, and clothing away from power-driven parts.
- Wear snug fitting clothing to avoid entanglement with moving parts.
- Watch out for wires, trees, etc., when raising implement. Make sure all persons are clear of working area.
- Turning tractor too tight may cause implement to ride up on wheels. This could result in injury or equipment damage.

## Look For The Safety Alert Symbol

The SAFETY ALERT SYMBOL indicates there is a potential hazard to personal safety involved and extra safety precaution must be taken. When you see this symbol, be alert and carefully read the message that follows it. In addition to design and configuration of equipment, hazard control and accident prevention are dependent upon the awareness, concern, prudence and proper training of personnel involved in the operation, transport, maintenance and storage of equipment.

## Be aware of signal words

**A signal word designates a degree or level of hazard seriousness. The signal words are:**



### **DANGER**

Indicates an imminently hazardous situation which, if not avoided, will result in death or serious injury. This signal word is limited to the most extreme situations, typically for machine components that, for functional purpose, cannot be guarded.



### **WARNING**

Indicates a potentially hazardous situation which, if not avoided, could result in death or serious injury, and includes hazards that are exposed when guards are removed. It may also be used to alert against unsafe practices.



### **CAUTION**

Indicates a potentially hazardous situation which, if not avoided, may result in minor or moderate injury. It may also be used to alert against unsafe practices.

## For you protection

- Thoroughly read and understand the “safety label” section, read all instructions noted on them.

## Shutdown and storage

- Lower machine to ground, put tractor in park, turn off engine, and remove the ignition key.
- Detach and store implements in a area where children normally do not play. Secure implement by using blocks and supports.

## Use safety lights and devices

- Slow moving tractors, self-propelled equipment, and towed implements can create a hazard when driven on public roads. They are difficult to see, especially at night.
- Flashing warning lights and turn signals are recommended whenever driving on public roads. Use lights and devices provided with implement.

## Transport machinery safely

- Comply with state and local laws.
- Maximum transport speed for implement is 20 mph. Do not exceed. Never travel at a speed which does not allow adequate control of steering and stopping. Some rough terrain require a slower speed.
- Sudden braking can cause a towed load to swerve and upset. Reduce speed if towed load is not equipped with brakes.
- Use the following maximum speed - tow load weight ratios as a guideline:  
20 mph when weight is less than or equal to the weight of tractor.  
10 mph when weight is double the weight of tractor.
- **IMPORTANT:** Do not tow a load that is more than double the weight of tractor.

## Keep riders off machinery

- Riders obstruct of operator's view, they could be struck by foreign objects or thrown from the machine.
- Never allow children to operate equipment.

## Practice safe maintenance

- Understand procedure before doing work. Use proper tools and equipment. Refer to Operator's Manual for additional information.
- Work in a clean dry area.
- Lower the implement to the ground, put tractor in park, turn off engine, and remove key before performing maintenance.
- Allow implement to cool completely.
- Do not grease or oil implement while it is operation.
- Inspect all parts. Make sure parts are in good condition and installed properly.
- Remove buildup of grease, oil or debris.
- Remove all tools and unused parts from implement before operation.

## Prepare for emergencies

- Be prepared if a fire starts.
- Keep a fist aid kit and fire extinguisher handy.
- Keep emergency numbers for doctor, ambulance, hospital and fire department near phone.

## **Wear protective equipment**

- Protective clothing and equipment should be worn.
- Wear clothing and equipment appropriate for the job. Avoid loose fitting clothing.
- Prolonged exposure to loud noise can cause hearing impairment or hearing loss. Wear suitable hearing protection such as earmuffs or earplugs.
- Operating equipment safely requires the full attention of the operator. Avoid wearing radio headphones while operating machinery.

## **Avoid high pressure fluids hazard**






- Escaping fluid under pressure can penetrate the skin causing serious injury.
- Avoid the hazard by relieving pressure before disconnecting hydraulic lines.
- Use a piece of paper or cardboard, not body parts, to check for suspected leaks. Wear protective gloves and safety glasses or goggles when working with hydraulic systems.
- If an accident occurs, see a doctor immediately. Any fluid injected into the skin must be treated within a few hours or gangrene may result.







## Safety Labels

**Your Flail Mower comes equipped with all safety labels in place. They were designed to help you safely operate your implement.**

**Read and follow their directions.**

1. Keep all safety labels clean and legible.
2. Replace all damaged or missing labels. To order new labels go to your nearest manufacturer dealer.
3. Some new equipment installed during repair requires safety labels to be affixed to the replaced component as specified by manufacturer. When ordering new components make sure the correct safety labels are included in the request.
4. Refer to this section for proper label placement.

1		Carefully read the operator's manuals of tiller, tractor and cardan shaft before using the machine.
2		Disengage the PTO, turn off the tractor engine, remove the key and ensure that all rotating parts have stopped before approaching the implement. Read the operator's manual before performing any maintenance operation.
3		Thrown or flying objects hazard. Keep a safe distance from the machine.
4		Rotating knives: severing of lower limbs hazard. Keep a safe distance from the machine.
5		Cutting of fingers or hand hazard. Wait until all machine components have completely stopped before touching them.

6		<p>Belt drive: hand and arm entanglement hazard. Do not open or remove safety shields while engine is running.</p>
7		<p>Crushing hazard. Stay clear of draft link lifting range while in operation.</p>
8		<p>Implement input driveline: body entanglement hazard. Do not open or remove safety shields while engine is running.</p>
9		<p>Before engaging the tractor PTO, check that rpm rate and sense of rotation are those prescribed for the implement.</p>
10		<p>Lower limbs crushing hazard. Keep a safe distance from the machine.</p>
11		<p>Crushing hazard. Do not get rear the machine.</p>







# Introduction

Grizzly® welcomes you to the growing family of new product owners. This implement has been designed with care and built by skilled workers using quality materials. Proper assembly, maintenance, and safe operating practices will help you get years of satisfactory use from the machine.

## Application

The Flail Mowers are designed for Category 1 - three point hitch. These Fixed Bar Flail Mowers are ideal for ripping, leveling, finish grading, and backfilling applications at feedlots, outdoor arenas, building sites, and maintenance operations on farm and ranch lanes or roadways.

## Using This Manual

- This Operator's Manual is designed to help familiarize you with safety, assembly, operation, adjustments, troubleshooting, and maintenance. Read this manual and follow the recommendations to help ensure safe and efficient operation.
- The information contained within this manual was current at the time of printing. Some parts may change slightly to assure you of the best performance.
- To order a new Operator's or Parts Manual contact your authorized dealer. Manuals can also be printed from the Manufacturer Supplier Service & Support center by your dealer.

## Terminology


"Right" or "Left" as used in this manual is determined by facing the direction the machine will operate while in use unless otherwise stated.

## Definitions

Note: A special point of information that the operator must be aware of before continuing.  
Important: A special point of information related to its preceding topic. The intention is that this information should be read and noted before continuing.

## Serial Number Plate

For prompt service always use the serial number and model number when ordering parts from your dealer. Be sure to include your serial and model numbers in correspondence also.

**Grizzly®****Direct Distributors, Inc.**

P.O.Box 799 Garner, NC 27529  
Tel:1-800-345-0169

Type	
Model	
Serial No.	
Year	
Weight (Kg/LBS)	
Input (rpm)	

MADE IN CHINA

# Section 1: Assembly and Set-up

---

## Tractor Requirements

This mower is designed with a 3-Point category I hitch. Tractor horse power rating should not exceed 50 PTO horse power.

## Assembly

Refer to the parts illustration.

## Tractor Hook-Up

1. Be certain that tractor draw bar will not interfere. Move draw bar ahead or remove if required. Draw bar should also be checked for clearance when unit is being raised for the first time.
2. Align lower link arms of tractor to hitch clevises on mower. Insert lower hitch pins into lower ball swivels and attach linch pins.
3. Attach tractor top link to upper floating hitch on mower with pin supplied. Secure with lock pin.
4. Adjust tractor top link in or out to place upper hitch pin vertically above or slightly behind lower hitch pins to allow mower flotation. The mower should be run with the back 15 degrees lower than the front.

## Driveline Installation

1. Slide driveline end with extended safety cone over splined shaft of gearbox and secure with attaching device.
2. Slide driveline over tractor's splined PTO shaft and secure with locking device of driveline.
3. Driveline should now be moved back and forth to insure that it is secure on the PTO shaft of the tractor and mower gearbox.
4. Attach chain from the driveline shield to one of the upper hitch braces to ensure that the shield does not rotate.
5. Should driveline require shortening:
  - a. Hold the half-shafts next to each other in the shortest working position and mark them.
  - b. Shorten inner and outer guard tubes equally.
  - c. Shorten inner and outer sliding profiles by the same length as the guard tubes.
  - d. Proper overlap is a minimum of one-half the length of each tube, with both tubes being of equal length.
  - e. Round off all sharp edges and remove burrs. Grease sliding profiles.



## CAUTION

Tractor PTO shield and all mower guards must be in place at all times during operation!

## Section 2: Operating Instructions

---

### Transporting

NOTE: Always disengage PTO before raising mower to transport position.

1. When raising the mower to transport position, be sure that driveline does not contact tractor or mower. Adjust and set the tractor's 3-point hitch lift height so that the driveline does not contact mower deck in the fully raised position.
2. Be sure to reduce tractor ground speed when turning, leaving enough clearance so that the mower does not contact obstacles such as buildings, trees or fences.
3. Select a safe ground travel speed when transporting from one area to another. When traveling on roadways, transport in such a way that faster moving vehicles may pass safely.
4. When traveling over rough or hilly terrain, shift tractor to a lower gear.



### CAUTION

When traveling on public roads, whether at night or during the day, use accessory lights and devices for adequate warning to operators of other vehicles. Comply with all Federal, State, and local laws.

### Mowing Instructions

1. Clear area to be mowed of objects and debris that might be picked up and thrown by the mower blades.
2. Grass is best cut when it is dry. Mowing wet grass can cause plugging resulting in grass clumps behind the mower.
3. Grass should be mowed frequently as shorter clippings deteriorate faster.
4. If mowing extremely tall grass, it is best to raise cutting height and mow the area, then lower cutting height and mow a second time at the desired height.

### Operating Instructions

Proper servicing and adjustments are the key to the long life of any machine. With careful and systematic inspection of the mower, costly maintenance, time and repair can be avoided.

Before beginning to mow, the following inspection should be performed:

1. Check oil level in gearbox. (Manufacturer added 85W/90 gear oil by 1.2L into the gearbox before shipment). Customer still need to check oil level before starting and future maintenance)
2. Check that all plugs in gearbox have been replaced and tightened properly.
3. Be sure all mower knives, bolts and nuts are tight.
4. Be certain all guards and shields are in place and secure.
5. Grease driveline shaft and all other grease fittings.
6. Clear area to be mowed of rocks, branches and other foreign objects.
7. Lower mower to ground. Set tractor throttle at approximately 1/4 open. Engage PTO to start blades rotating.
8. Operate with 540 rpm PTO tractor.
9. At first begin mowing at a slow forward speed and shift up until the desired speed is achieved - maintaining 540 PTO rpm.
10. Mower knives will cut better at a faster blade speed than at reduced throttle.
11. After mowing the first 50 feet, stop and check to see that the mower is adjusted properly.
12. Do not make sharp turns or attempt to back up while mower is on the ground.
13. Do not engage PTO with mower in the fully raised position. Do not engage PTO at full throttle.

## Section 3: Adjustments

### Leveling the Mower

NOTE: Tractor and mower should be on level ground.

Leveling can be adjusted at the tractor's 3-point arms and center link.

### Cutting Height Adjustment

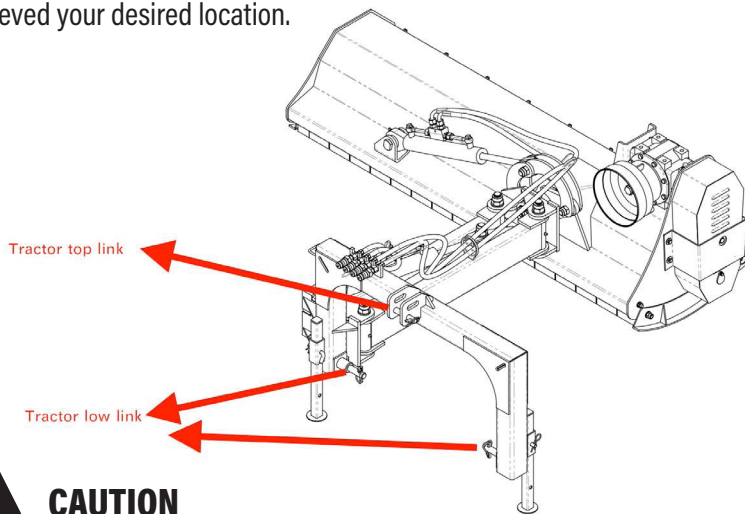
The machine's cutting height depends upon the position of the rear roller.

1. Remove the bolts that fix the roller on both sides.
2. Lift or lower both sides of roller in equal measurements.
3. Replace bolts and re-tighten.

### 3-Point Hitch Adjustments

The 3-point hitch system on this mower has been designed for front to back flotation when mowing on uneven terrain. Adjust tractor's top center link to place the upper hitch pin vertically above or slightly behind the lower hitch pins. The mower should be run with the back 15 degrees lower than the front.

The hitch can also be adjusted from side to side by turning the adjustment handle. Turn handle until you have achieved your desired location.



#### CAUTION

Engage parking brake, shut off tractor, remove key and disengage PTO before making any height adjustments!

### Belt Tension



#### CAUTION

Belt drive system under spring tension; use care to avoid bodily harm!

The Belt tension should be checked after the first 20 hours of use. And then every 40 hours of use.

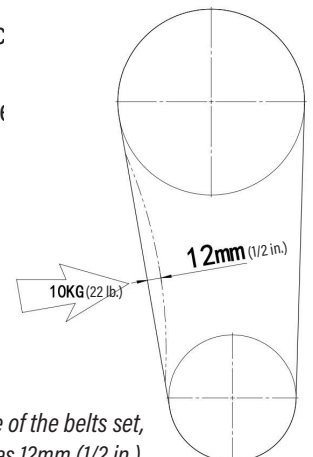
1. Tension on the belt can be adjusted with the belt tension bolt. Turn the bolt until desired tension is achieved. When the belt has the correct tension the gearbox should be adjusted so that the gearbox extension is running straight (parallel) with the flail mower. Loosen bolts at the bottom of the gearbox and move gearbox until gearbox extension is running straight.
2. Excessive tension on the belt may lead to premature failure of belt and drive components.



#### CAUTION

Excessive tension on the belt may lead to premature failure of belt and drive components.

Excessive tension on the belt may also lead to a safety hazard to the operator or bystanders.



*Apply a force of about 10kg (22 lb.) on the middle of the belts set, and measure the deflection of the consequent deflection of the belts as 12mm (1/2 in.).*

## Section 4: Maintenance and Lubrication

---

### Maintenance

Proper servicing and adjustment is the key to the long life of any farm implement. With careful and systematic inspection, you can avoid costly maintenance, time and repair.



#### CAUTION

For safety reasons, each maintenance operation must be performed with tractor PTO disengaged, mower lowered completely to ground and tractor engine shut off with ignition key removed.

- After using the mower for several hours, check all bolts to be sure they are tight and check drive belt tension.
- Replace any worn, damaged or illegible safety decals by obtaining new decals from dealer.

### Knife Replacement

**IMPORTANT:** Make sure that the knife is the same length as the others on the mower. This will keep the rotor rotation balanced.

1. Remove bolt and nut.
2. Remove old knife.
3. Install new knife and existing bolt.
4. Secure with nut.

### V-Belt Installation



#### CAUTION

Belt drive system under spring tension; use care to avoid bodily harm!

1. Remove belt guard fender and belt cover.
2. Disengage belt tension by loosening belt tension bolt until belt can be removed.
3. With tension relieved from belt remove old belt from pulleys.
4. Tighten belt tension bolt.
5. Reinstall belt guard and belt guard fender.

### Storage

At the end of the working season or when the mower will not be used for a long period, it is good practice to clean off any dirt or grease that may have accumulated on the mower and any of moving parts.

1. Clean as necessary.
2. Check knives for wear and replace if necessary.
3. Inspect mower for loose, damaged or worn parts and adjust or replace as needed.
4. Store unit inside if possible for longer life.
5. Repaint parts where paint is worn or scratched to prevent rust.
6. Replace all damaged or missing decals.

Lubrication

Driveline Shaft U-Joints



Type of Lubrication: Multi-purpose Grease

Roller Bearing (Both Ends)



Type of Lubrication: Multi-purpose Grease

Cutter Rotor Bearing (Both Ends)



Type of Lubrication: Multi-purpose Grease

Gearbox

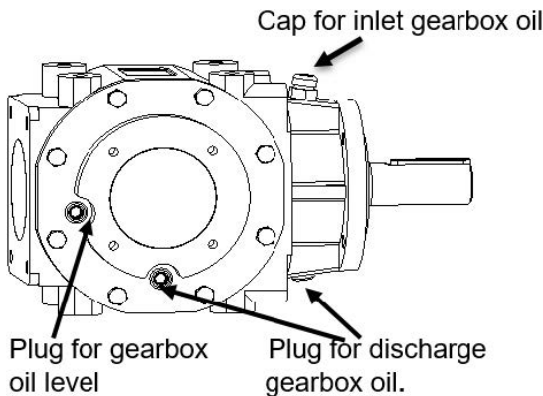


Type of Lubrication: SAE 90W or 85W/90 Gear Lube

Check oil level in gearbox by removing the plug located on the right hand side. Oil should be level with bottom of plug hole. Add oil if necessary by removing top fill plug and side plug. Add oil until it flows from side plug hole.

**Do not overfill!**

**IMPORTANT:** Mower should be level when checking oil in gearbox!



Driveline Profiles

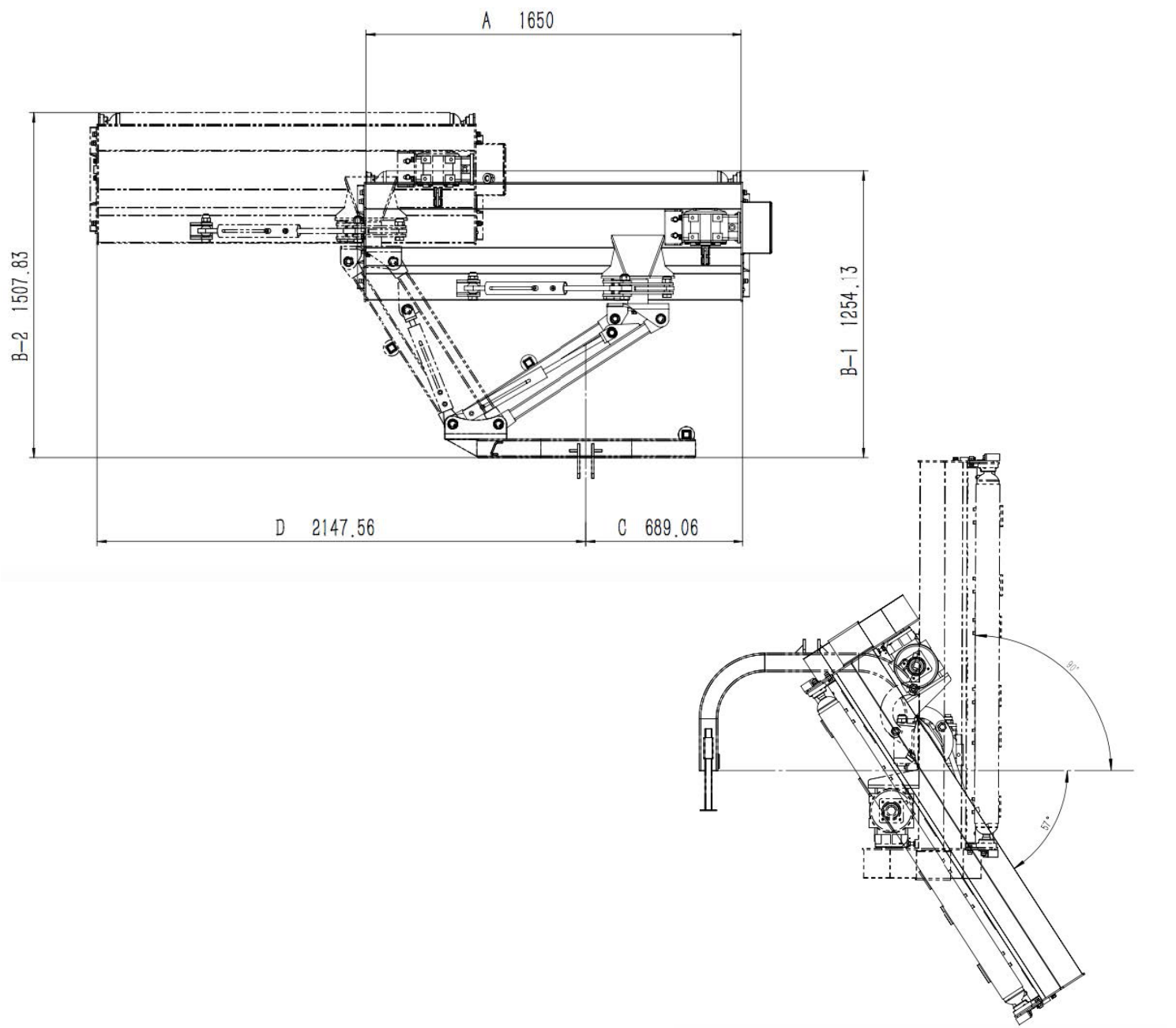


Type of Lubrication: Multi-purpose Grease

# Section 5: Specifications & Capacities

Model	GFR125	GFR145	GFR165
Structure Weight	286kg (648 lb.)	313kg (690 lb.)	327kg (720 lb.)
Working Width	1200mm (48")	1450mm (51")	1650mm (65")
PTO Turning Speed	540r/min	540r/min	540r/min
Number of Flails	Hammer: 20	Hammer: 24	Hammer: 28
Tractor HP	20-40hp	30-45hp	40-50hp

Model	A	B-1	B-2	C	D
GFR125	1250mm	1254mm	1507mm	689mm	1747mm
GFR145	1450mm	1254mm	1507mm	689mm	1947mm
GFR165	1650mm	1254mm	1507mm	689mm	2147mm





## Section 6: Troubleshooting

Problem	Solution
<b>CAUTION</b> Do not try to clean rear discharge area when mower is running. Bodily harm may occur!	
<b>Belt slipping</b>	Unplug and clean mower deck.
	Remove belt guard shields and clean sheaves.
	Replace belt.
<b>Patches of uncut grass</b>	Mow at full throttle (540 PTO rpm), check PTO speed and tractor engine.
	Shift transmission to a lower gear.
	Tighten belts.
	Replace missing knives.
<b>Excessive vibration</b>	Replace knives.
	Replace drive belt.
	Replace pulleys or align.
	Remove belt guard shields & clean debris from belt area & sheaves.
<b>Gearbox noisy</b>	Check lubricant level.
<b>Knives scalping grass</b>	Raise cutting height by adjusting roller.
	Change mowing pattern.
	Reduce speed turns.
<b>Uneven cut</b>	Shift to a lower gear.
	Level mower.
	Replace missing knives.
<b>Tractor loaded down by mower</b>	Mow at full throttle (540 PTO rpm).
	Shift to a lower gear.
	Clean mower.

# Section 7: Appendix

## Bolt Torque

The tables shown below give correct torque values for various bolts and cap screws. Tighten all bolts to the torques specified unless otherwise noted. Check tightness of bolts periodically, using bolt torque chart as a guide. Replace hardware with the same strength bolt.

ENGLISH TORQUE SPECIFICATIONS

Bolt Diameter	Bolt Diameter					
	SAE 2		SAE 5		SAE 8	
	N.m	lb-ft	N.m	lb-ft	N.m	lb-ft
1/4"	8	6	12	9	17	12
5/16"	13	10	25	19	36	27
3/8"	27	20	45	33	63	45
7/16"	41	30	72	53	100	75
1/2"	61	45	110	80	155	115
9/16"	95	60	155	115	200	165
5/8"	128	95	215	160	305	220
3/4"	225	165	390	290	540	400
7/8"	230	170	570	420	880	650

## METRIC TORQUE SPECIFICATIONS

Bolt Diameter	Bolt Diameter			
	8.8		10.9	
	N.m	lb-ft	N.m	lb-ft
M3	0.5	0.4	1.8	1.3
M3	3	2.2	4.8	3.3
M5	6	4	9	7
M6	10	7	15	11
M8	25	18	35	26
M10	50	37	70	52
M12	90	66	125	92
M14	140	103	200	148
M16	225	166	310	229
M20	435	321	610	450
M24	750	553	1050	744
M30	1495	1103	2100	1550
M36	2600	1917	3675	2710

Torque figures indicated above are valid for non-greased or non-oiled threads and heads otherwise specified. Therefore, do not grease or oil bolts or cap screws unless otherwise specified in this manual. When using locking elements, increase torque values by 5%.

## Warranty

**Direct Distributors Inc.** offer the following warranty to the purchaser of Grizzly® equipment mentioned herein above subject to the conditions set out herein after provided the Grizzly® equipment shall be in the possession of and used by such purchaser from the date of delivery.

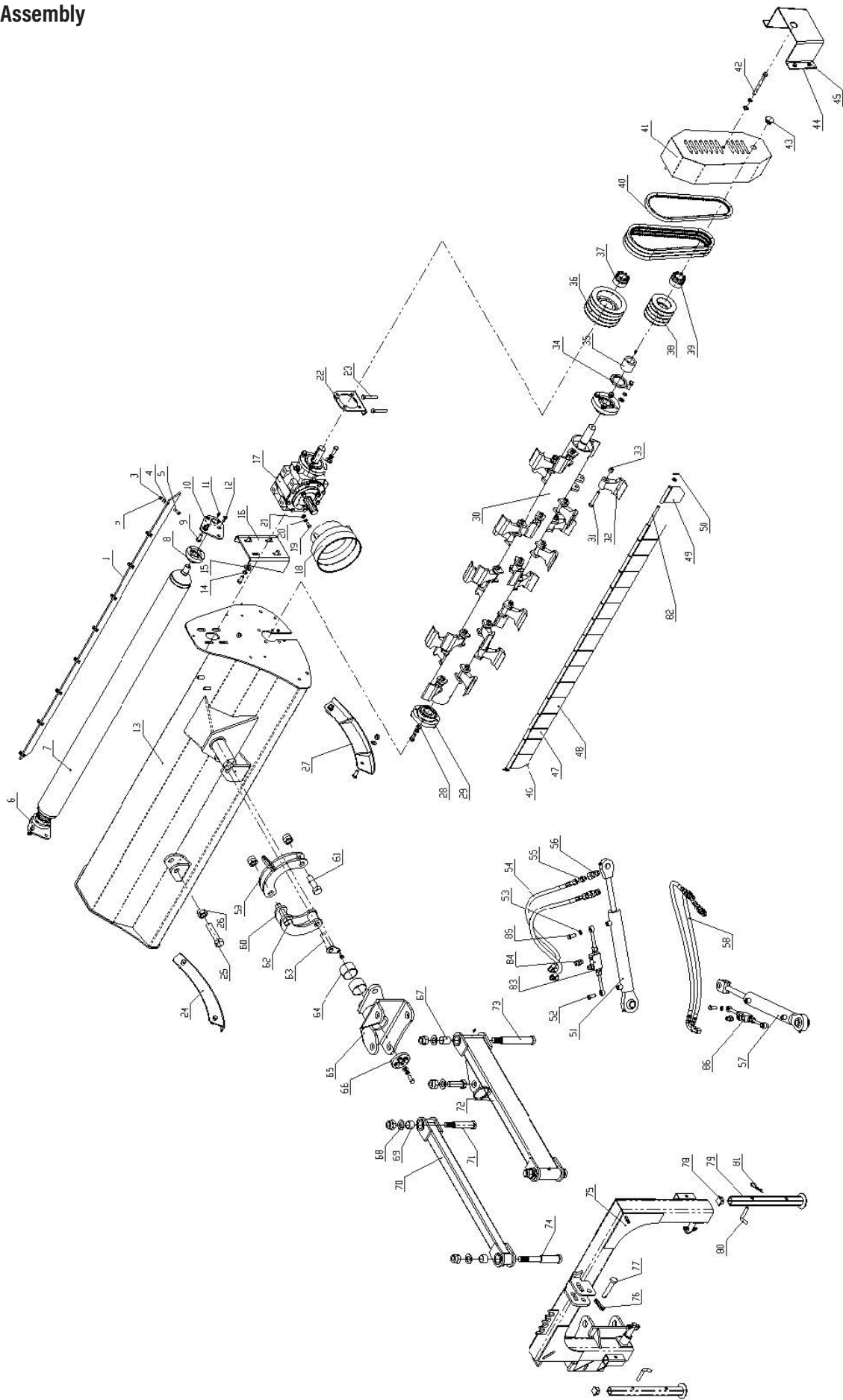
**Direct Distributors Inc.** Warrants its products for a period of twelve (12) months from date of delivery, for manufacturing or material defects only. Failed part will be replaced at its authorized dealers only and any part component there of that shall be examined by them, shall disclose if to be defective. This warranty shall not apply to equipment or parts that have been subject to negligence, or accident, or not maintained as per company instructions specified in operator manual or that have been altered or repaired or used with non-genuine parts or abused or due to contaminated oil or used in not recommended application.

### Warranty Terms & Conditions:

1. The purchaser of Grizzly® equipment should strictly follow the instruction given in the instruction manual provided by the company along with the Grizzly® equipment at the time of delivery. Changes if any, resulting in improper usage will not be covered by the warranty. This warranty will automatically terminate on the expiry of warranty period of 12 months. Even the Grizzly® equipment may not be in use for any time during the warranty period for any reason whatsoever including any technical reasons and time taken for such repairs/replacement of parts, and in transit, whether under this warranty or otherwise shall not be excluded from the warranty period.
2. All wear and tear items like bearings, chains, sprockets, oil seals, tines, blades, rubber parts and gaskets are not covered under warranty.
3. All items with normal wear or failure due to normal wear will not be covered under warranty.
4. While the company or authorized dealers will make every effort to carry out repairs/replacement of parts under this warranty as soon as possible. It is expressly made clear that the company shall not be liable to do within any specific period of time. In the event of repairs/replacement of any parts, this warranty will thereafter continue to remain in force only for the unexpired period of warranty.
5. It is entirely left to company discretion to repair/replacement of parts at the site of delivery or at the authorized service points of its dealers. The defective parts which has/have been agreed to be replaced, should be returned to the company without any further claim.
6. The warranty shall not cover any consequential or resulting liability, damage or loss arising directly or indirectly out of any defect in the Grizzly® equipment. This warranty shall be strictly limited to repairs and replacement of the defective parts specified in the warranty, and does not cover any reimbursement of labor charges for any repairs so earned out at dealer/client end.
7. This warranty shall not be extended in any case of replacement or return of the Grizzly® equipment as a whole. Only failed parts will be covered under warranty.
8. The purchasers of Grizzly® equipment will itself fully responsible for model/variant selection.
9. This warranty does not cover for statutory duties and taxes like excise, service tax or CST or VAT or State sales tax and octroi and any other local taxes payable on any of the parts which the company may supply or repairs free of cost during the warranty period.
10. This warranty also does not cover the cost of packaging, to and from freight and transportation charges etc., on the defective Grizzly® equipment or other parts of the Grizzly® equipment sent to the authorized service station.
11. Warranty becomes void if:
12. The Grizzly® equipment has not been delivered, assembled, started and put into operation by the company or its authorized representative.
13. The dully filled delivery certificate is not in our possession within 15 days from the date of delivery.
14. The Grizzly® equipment or any parts thereof is subjected to neglect, fire, floods or other acts of God or if in the company's opinion any damage has caused to the Grizzly® equipment during transportation.
15. The original serial number is removed, obliterated or altered from the unit.
16. Any attempt is made to have the repairs executed by a person or persons, other than the company or its authorized representative.
17. Any defect is not informed immediately to the company or its authorized representative, any alteration in warranty card is made.
18. Whenever the user or anyone else on his behalf applies equipment to the tractor or to prime mover that has not been expressly approved by the manufacturer or not suitable to the equipment.

# Section 8: Parts illustration

## Flail Mower Assembly



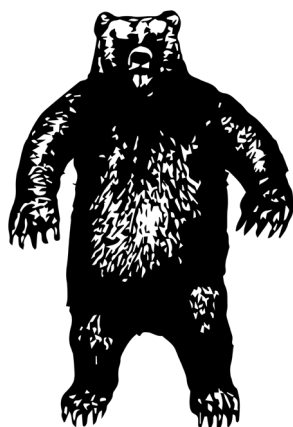
No.	Code	Description	Qty	REMARK
1	AGL125COS.27	Rubber Plate	1	GFR125
	AGL145COS.27		1	GFR145
	AGL165COS.27		1	GFR165
2	LN8	Locking Nut M8	7	GFR125
			8	GFR145
			9	GFR165
3	SW8	Spring Washer 8	12	GFR125
			13	GFR145
			14	GFR165
4	PW8	Plain Washer 8	12	GFR125
			13	GFR145
			14	GFR165
5	BOT825	Bolt M8*25	7	GFR125
			8	GFR145
			9	GFR165
6	AGL165COS.19B	New Supporting for roller(Right)	1	
7	AGL125COS.21B	Rear Roller (New by 121mm diameter)	1	GFR125
	AGL145COS.21B		1	GFR145
	AGL165COS.21B		1	GFR165
8	UC205-AGL	Bearing seat with bearing UC205	2	Roller
9	BOT 1230	Bolt M12*30	22	
10	AGL165COS.20B	New Supporting for roller (Left)	1	
11	JB/T 7940.1	Grease nipple M8*1	8	
12	HH BOT825	Hex.head bolt M8X25	8	
13	AGL125COS.13E	Mower deck	1	GFR125
	AGL145COS.13E		1	GFR145
	AGL165COS.13E		1	GFR165
14	SW12	Spring washer 12	12	
15	BW12	Bigger wahser 12	10	
16	AGL165.16	Adjusting frame for the gear box	1	
17	CMR gearbox	Gear box assembly	1	
18	FM150.120	Guard shade	1	
19	BOT 1020	Bolt M10*20	4	
20	SW10	Spring Washer 10	4	
21	PW10	Plain washer 10	19	GFR125
			21	GFR145
			23	GFR165
22	AGL165.17	Adjusting plate	1	
23	BOT1250	Bolt M12*50	2	
24	AGL165COS.14A	Skid (Right)	1	
25	BOT24110	Bolt M24*110	1	

26	LN24	Locking Nut M24	8	
27	AGL165COS.15A	Skid (Left)	1	
28	PW12	Plain washer 12	26	
29	UC207-Z	Bearing seat with bearing UC207-Z	2	Rotor
30	AGL125.22	Rotor weldment	1	GFR125
	AGL145.22		1	GFR145
	AGL165.22		1	GFR165
31	BOT1280	Bolt M12*80	20	GFR125
			24	GFR145
			28	GFR165
32	AGL165.39	Hammer	20	GFR125
			24	GFR145
			28	GFR165
33	LN12	Locking Nut M12	28	GFR125
			32	GFR145
			36	GFR165
34	GB13871-94	Oil seal FB55*80*8	1	
35	EFGC155.26	Bushing	1	GFR125/145
	EFGC175.26		1	GFR165
36	EFGC155.31	Big Belt Pulley	1	GFR125/145
	EFGC175.31	Big Belt Pulley	1	GFR165
37	JB/T7934Z3-1	Power lock 04 type 33X60	1	
38	EFGC155.27	Small Pulley	1	GFR125/145
	EFGC175.27		1	GFR165
39	JB/T7934Z3 -2	Power lock 04 type 35X60	1	
40	GB/T1154-97	Belt SPB991	3	GFR125/145
			4	GFR165
41	AGL145COS.18E	Belt cover	1	GFR125/145
	AGL165COS.18E	Belt cover	1	GFR165
42	BOT 12110	Bolt M12*110	1	GFR125/145
	BOT 12130	Bolt M12*130	1	GFR165
43	RUBBER 25	Rubber plug	1	
44	AGL165.24A	Belt cover protection	1	GFR125/145
	AGL165.24B	Belt cover protection	1	GFR165
45	BOT 820	Bolt M8*20	5	
46	EF100.00.122A	Fender	1	
47	EF100.00.121	Fender	1	
48	EF100.00.122	Fender	10	GFR125
		Fender	12	GFR145
		Fender	14	GFR165
49	EF100.00.122B	Fender	1	
50	GB/T91	Circlip 3.5*30	2	
51	AGL165COS.12B	Swing cylinder	1	

52	SWBOT1212530	Swing bolt M12*1.25*30	2	
53	JB/T982-1977	Combined washer	8	
54	AGL165COS.26B.4	Oil pipe	2	
55	1B-04-08WD	Connetion G1/2-G1/4BSP	4	
56	GB/T5862-2004	Quick Couple	4	
57	AGL165COS.7B	Side shift cylinder	1	
58	AGL165COS.26B.5	Oil pipe	2	
59	AGLJA125.10	Up moon plate	1	
60	AGL165.11	Down moon plate	1	
61	BOT2475	Bolt M24*75	2	
62	BOT24100	Bolt M24*100	1	
63	AGL165.23	Pin shaft	1	
64	SF-2.63.68.40	Bushing 63*68*40	2	
65	AGL165COS.8	Swing weldment plate	1	
66	AGL165.9	Plate	1	
67	SF-2.30.34.40	Bushing 30*34*40	4	
68	PW24	Plain washer 24	8	
69	SF-2.30.34.25	Bushing 30*34*25	4	
70	AGL165COS.4E	Arm weldment	1	
71	AGL165.6	Pin shaft	1	
72	AGLJA125.3	Arm weldment	1	
73	AGL165.2	Pin shaft	2	
74	AGL165.B1	Pin2	1	
75	AGL165COS.1E	3-point-linkage	1	
76	LP10.40	Lock pin	3	
77	AGL140.109	Top pin shaft	1	
78	RUBBER 28	Rubber plug	2	
79	AGL165.5	Stand foot	2	
80	1G135.00.107	Pin shaft	2	
81	RP 3.2.25	R pin	2	
82	AGL125.25	Shaft bar	1	GFR125
	AGL145.25		1	GFR145
	AGL165.25		1	GFR165
83	AGL165COS.26B.2	Locking valve for swing cylinder	1	
84	1B-04-06WD	Connection G3/8-G1/4BSP	4	
85	AGL165COS.26B.3	Hinged bolt with orifice	2	
86	AGL165COS.26B.2	Locking valve for side shift cylinder	1	
#	AGL165COS.12B-ZH	Swing cylinder with lock valve assemble		
#	AGL165COS.7B-ZH	Side shift cylinder with lock valve assemble		







# Grizzly®

Distributed by  
Direct Distributors, Inc.

Grizzly®  
P.O. Box 799  
Garner, NC 27529

Tel: 1-800-345-0169  
Email: [tech@agrisupply.com](mailto:tech@agrisupply.com)