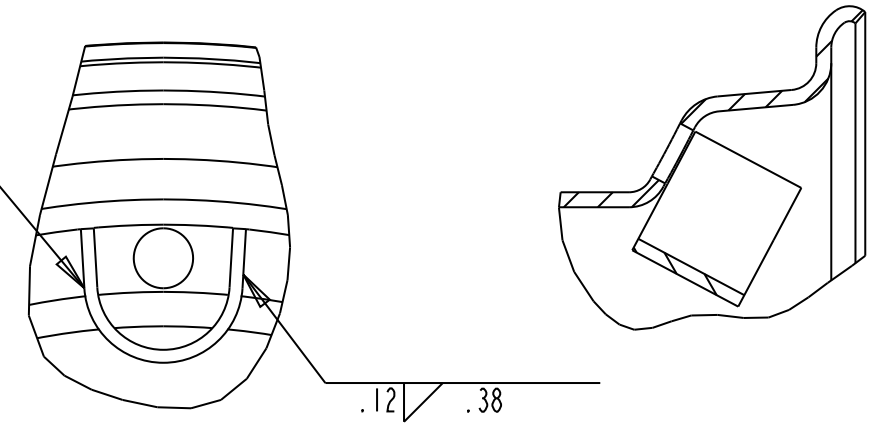
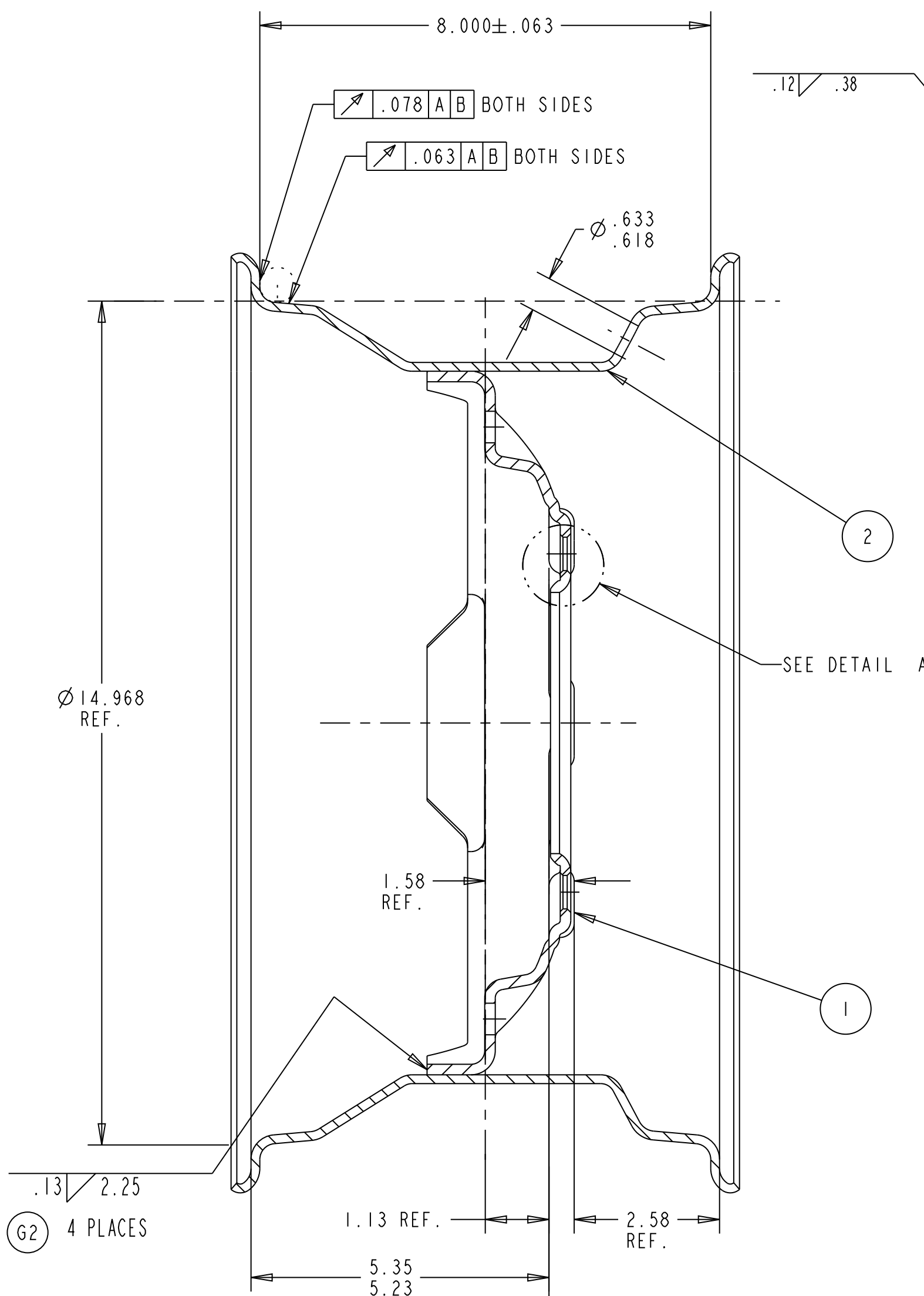
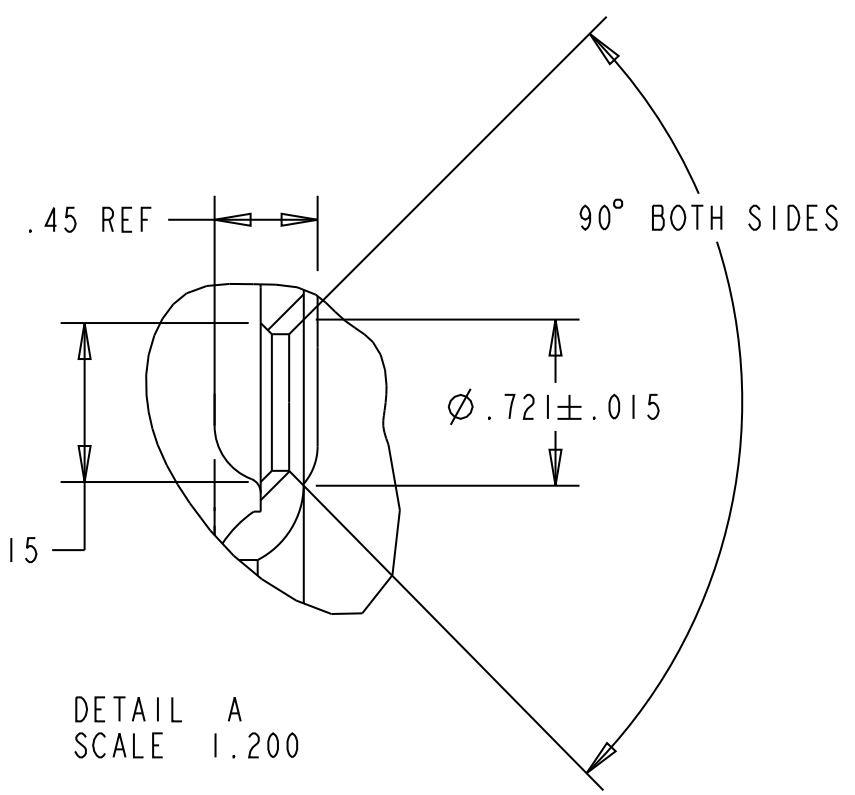
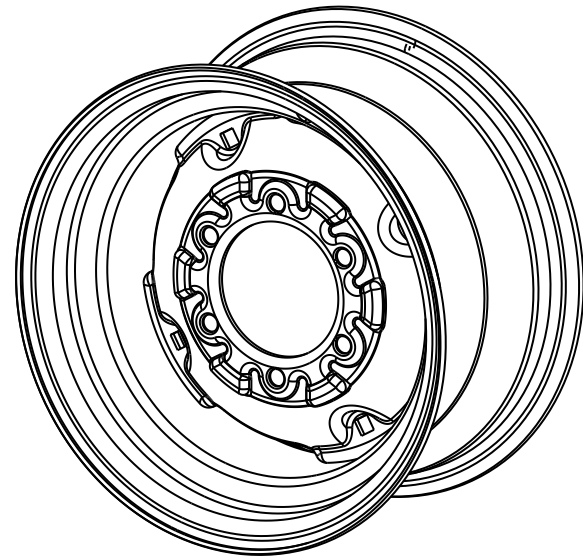
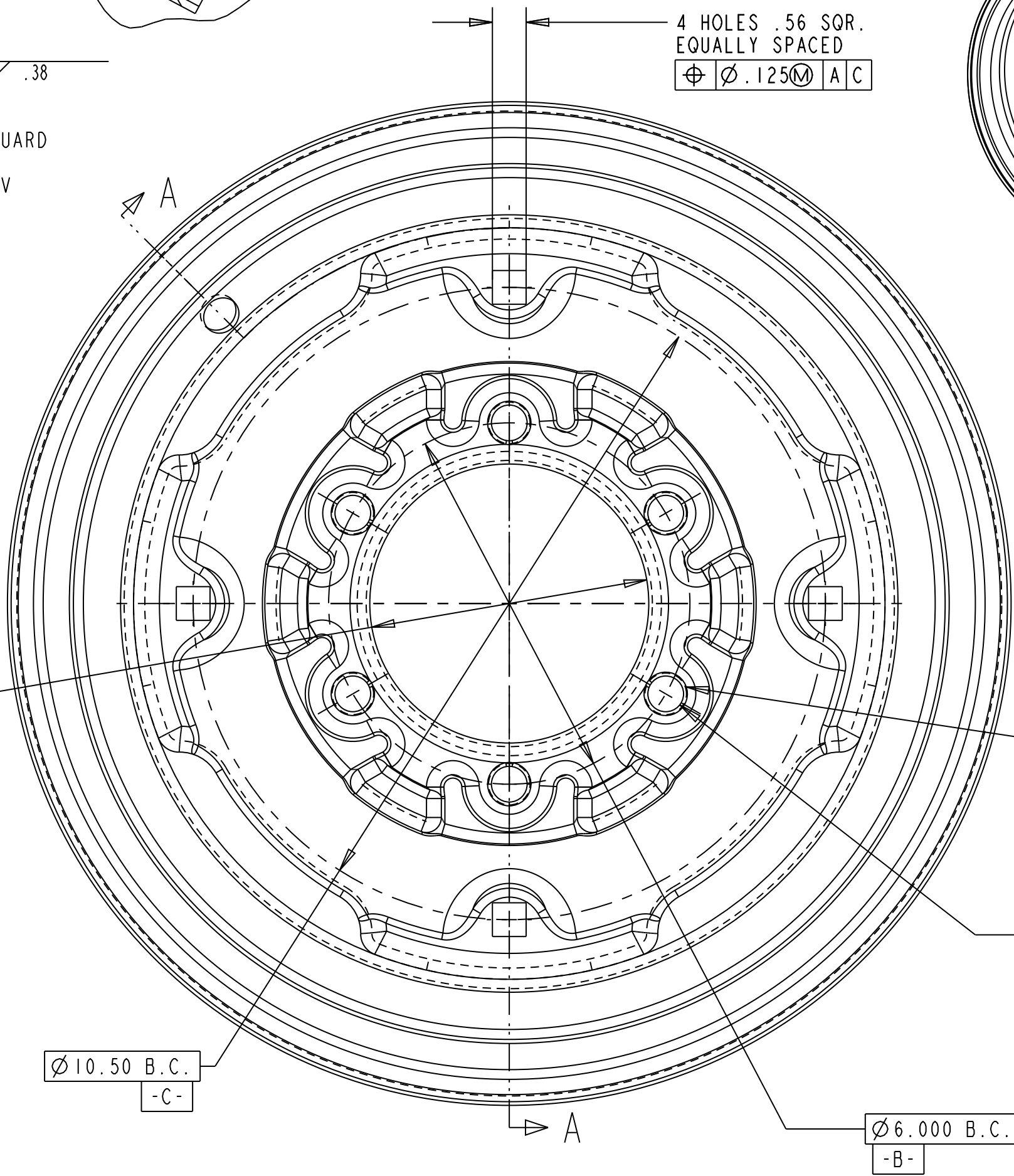


POS	QTY	PART NO.	DESCRIPTION
1	1	D300187	DISC 6-6-4.633
2	1	R203156Z1	RIM 15 X 8LB



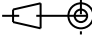

Ø 4.638
4.628
Ø .015 M B



SAE WHEEL NO: 634 PER SAE J712.

CAPACITY LB [KG]	SPEED MPH [KM/H]	APPLICATION
2900 [1315]	20 [32]	IMPLEMENT

This document, the information contained in this document and its subject matter are the property of the GKN Wheels Division of GKN plc. The information contained in this document is disclosed in strict confidence and it shall not be used, disclosed to others or reproduced without the express written consent of the GKN Wheels Division of GKN plc. If consent is given for reproduction of this document in whole or in part, this notice shall appear on any such reproduction. This document (with any and all reproductions and associated images) must be returned to the GKN Wheels Division of GKN plc immediately upon request.

G	ML	08-21-06	-	06-531	G1 - REVISED FORMAT & REDRAWN IN PRO/E G2 - WAS SPOT WELD				
ISSUE	DRAWN	DATE	APPROVE	ECN NO	CHANGE				
REFERENCES -					ENQUIRY NO.	WEIGHT 28.1 LB			
PROTECTIVE FINISH AS REQUIRED					CUSTOMER	VARIOUS			
					CUSTOMER NO.	N/A			
MATERIAL -		DIMENSION INCH [mm]			REPLACED BY -	REVISION			
PROJECTION 		CAD-SYSTEM PRO/E			SUPERSEDES -	G			
 GKN WHEELS TELFORD TELFORD, SHROPSHIRE ENGLAND GKN WHEELS NAGBOL LUNDERSKOV DENMARK GKN WHEELS FAD SPA CARPENEDOLO ITALY GKN WHEELS ARMSTRONG IOWA USA					WHEEL 15 X 8LB				
					NO HLS	BOLT CIRCLE	PILOT DIA	HOLE SIZE\TYPE	
					6	6.000	4.633	0.593 E	
					OFFSET		+1.13		
GLOBAL PART NO.					DRAWING NO. W50229				