

Caroni finish mower assembly instructions



First Steps in assembly will be to uncrate the mower deck and all parts. Lay all the parts out on a clean surface and make sure all parts are there and in good order.

After mower and parts have been uncrated, place the deck on a clean, safe work platform. We used heavy duty saw horses for the assembly of this 93" mower.

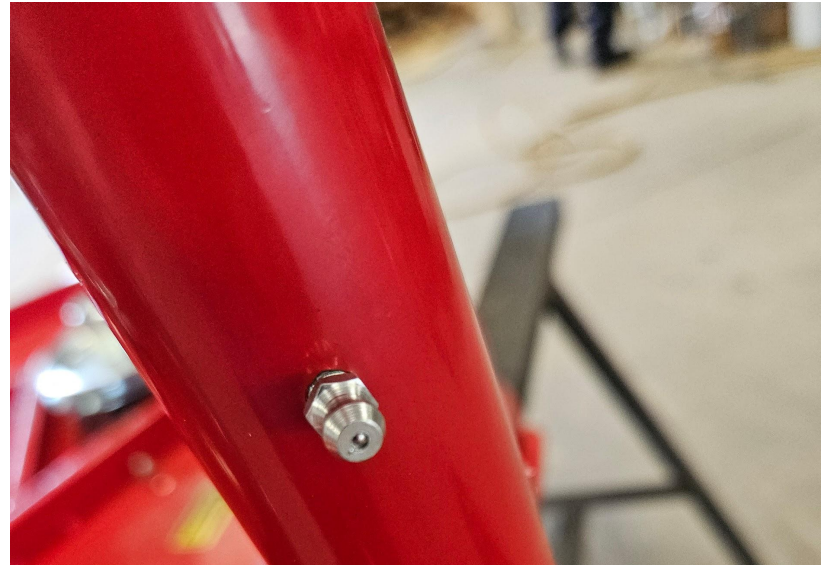


After the deck is on a safe working surface, we first bolt the two wheel supports on either side of the mower deck. These are held on by 3 bolts, washers and lock washers.



After the wheel supports are properly tightened, we install the wheels, spacers and locking clips. The hardened spacers are installed on the very top next to locking clip, it is a dull grey color and the others are a chrome color.

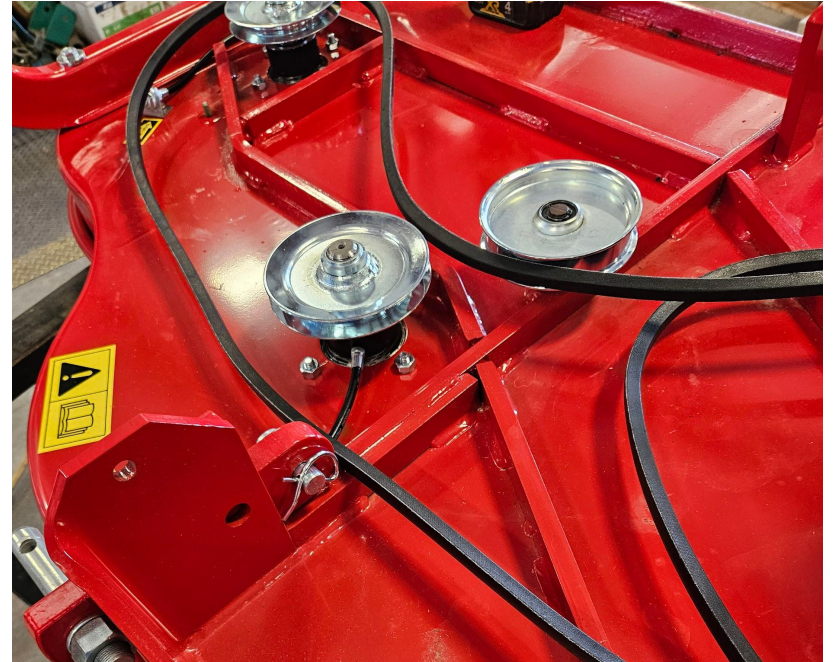
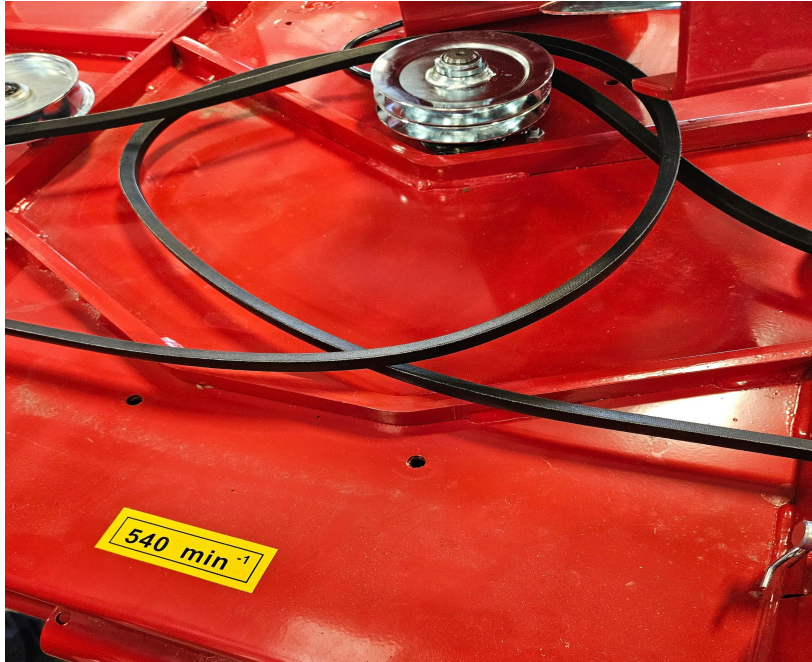
We then add the grease fittings and grease the wheel shafts and the wheel axles. Also at this time you can grease the mower spindles by way of the installed grease tubes and fittings.



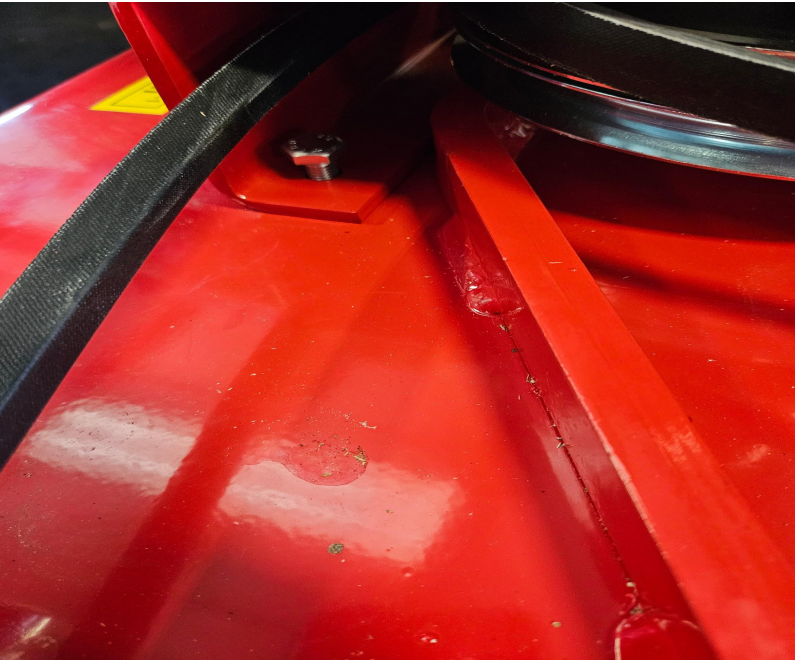
Clip, washers and spacers installed and greased



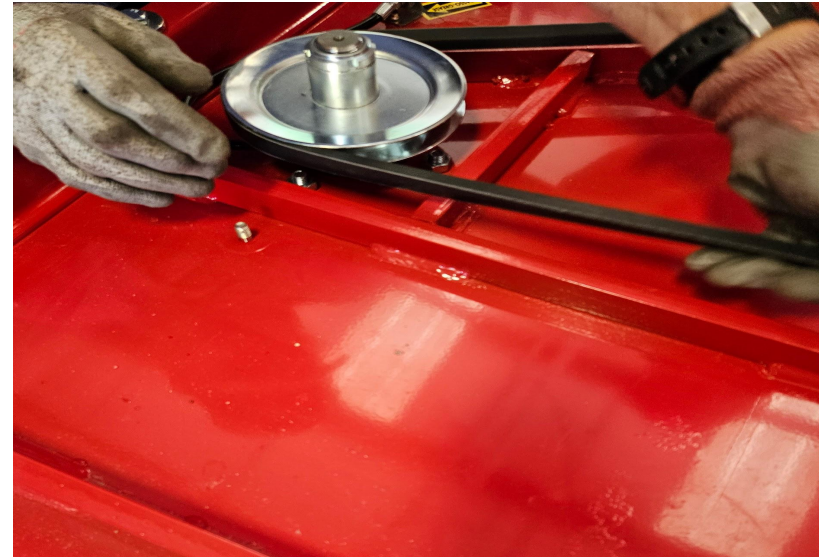
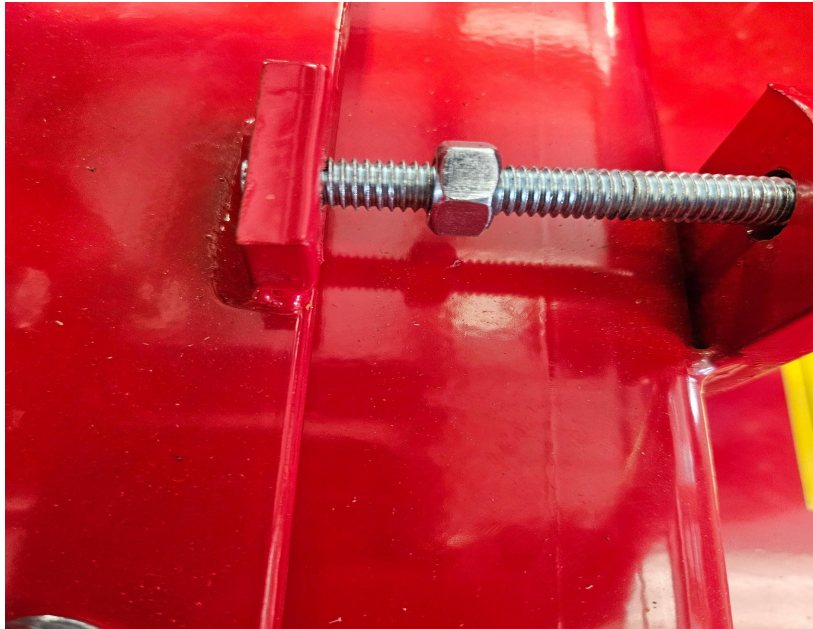
Next we install the belts, and then install the gearbox and plate assembly. The routing of the belts is different with each model. Please refer to your manual for belt routing diagram



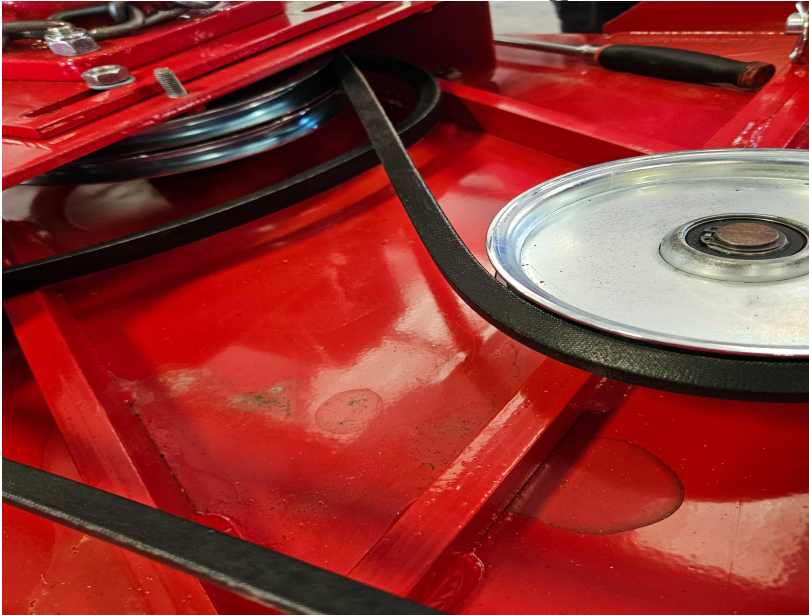
Bolt the gearbox plate down to the mower deck with bolt washer and lock washers.



Make sure the tensioner bolt is loose and you will still have to roll the belts onto the pulleys. One side belt will go on the lower pulley and the other side will go on the upper pulley.



Once the belts are on, rotate them around a few revolutions and tighten the tensioner on the gearbox. Belt deflection should be 10mm in either direction. Then lock down the bolts on the gearbox slide.



Next the rear discharge shield can be installed, using bolts and flat washers.



Now install the belt covers and pay attention to the grease tubes, careful not to pinch. Tighten the nuts down.

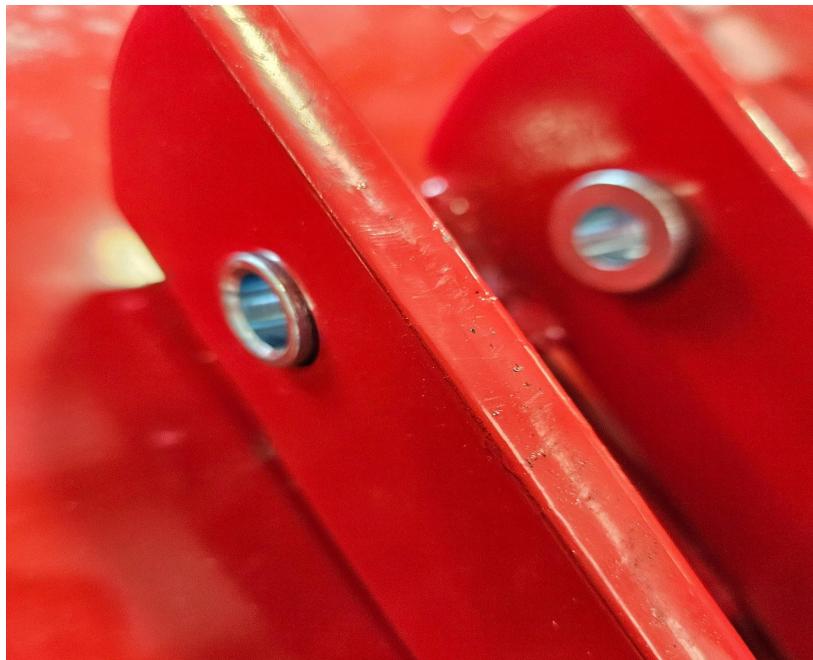


The gearbox will need to be filled with 80/90 weight gear oil.

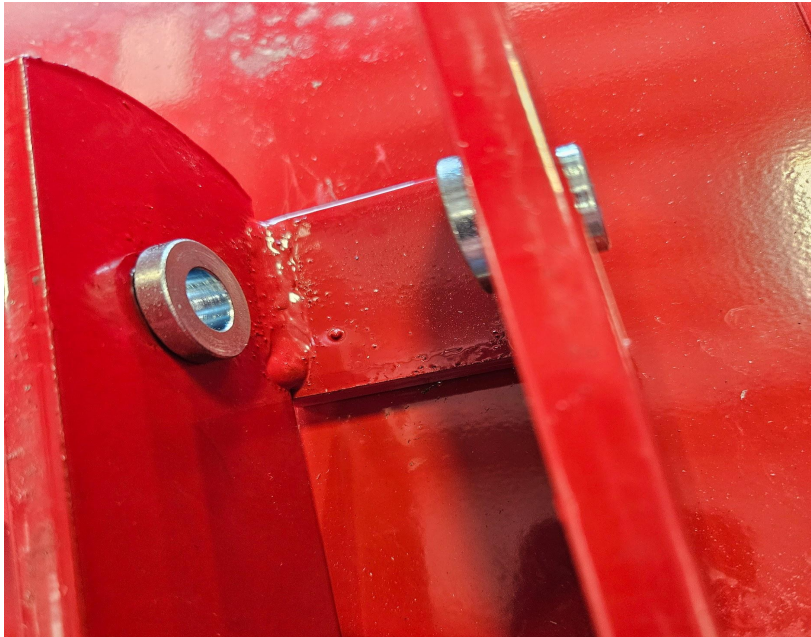


Now we bolt the support arms and A-frame to the mower.





The top link on the a frame may need to be pried open to get the lift arm supports installed. You may need a tool to help align bolt holes also.



Please note the orientation of the top link and hole. Hole not visible in picture, would be above this bracket



Last we check all bolts for tightness and install pto cover on the gearbox.



