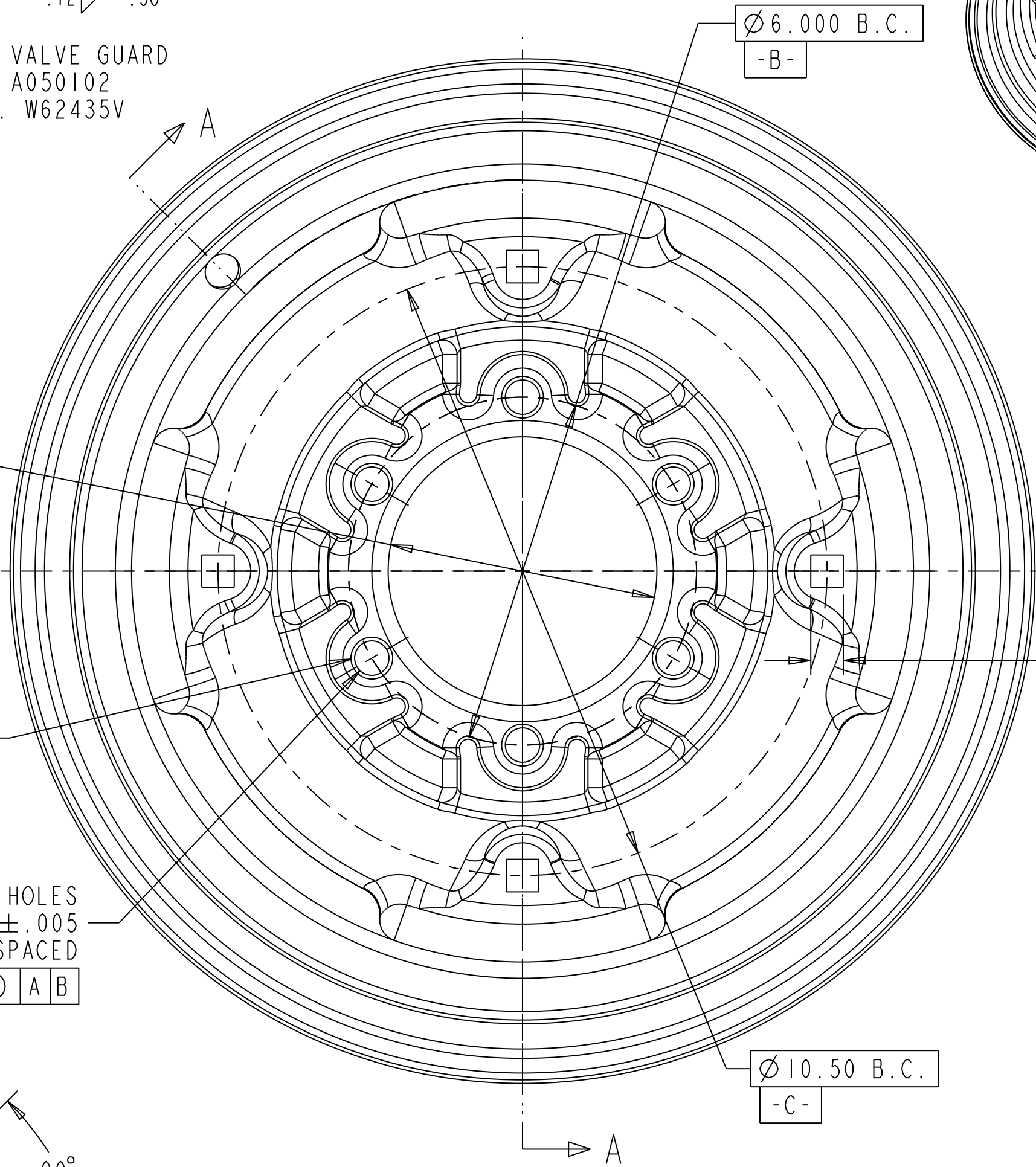
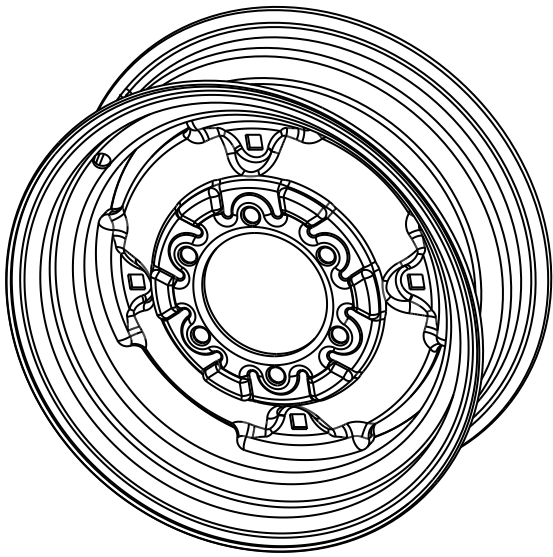


POS	QTY	PART NO.	DESCRIPTION
1	1	D308187	DISC 6-6-4.633
2	1	R218156Z1	RIM 16 X 6LB



OPTIONAL VALVE GUARD
PART NO. A050102
WHEEL NO. W62435V

Ø 4.638
4.628
⊙ Ø .015(M) B

6 CHAMFERS
BOTH SIDES
EQUALLY SPACED
⊕ Ø .015 A B

6 HOLES
Ø .593±.005
EQUALLY SPACED
⊕ Ø .020(M) A B

4 HOLES .56
EQUALLY SPACED
⊕ Ø .125(M) A C

Ø 10.50 B.C.
-C-

Ø 6.000 B.C.
-B-

.12/.38

.12/.38

⤴ .08 A B BOTH SIDES

⤴ .06 A B BOTH SIDES

Ø .633
.618

SEE DETAIL B

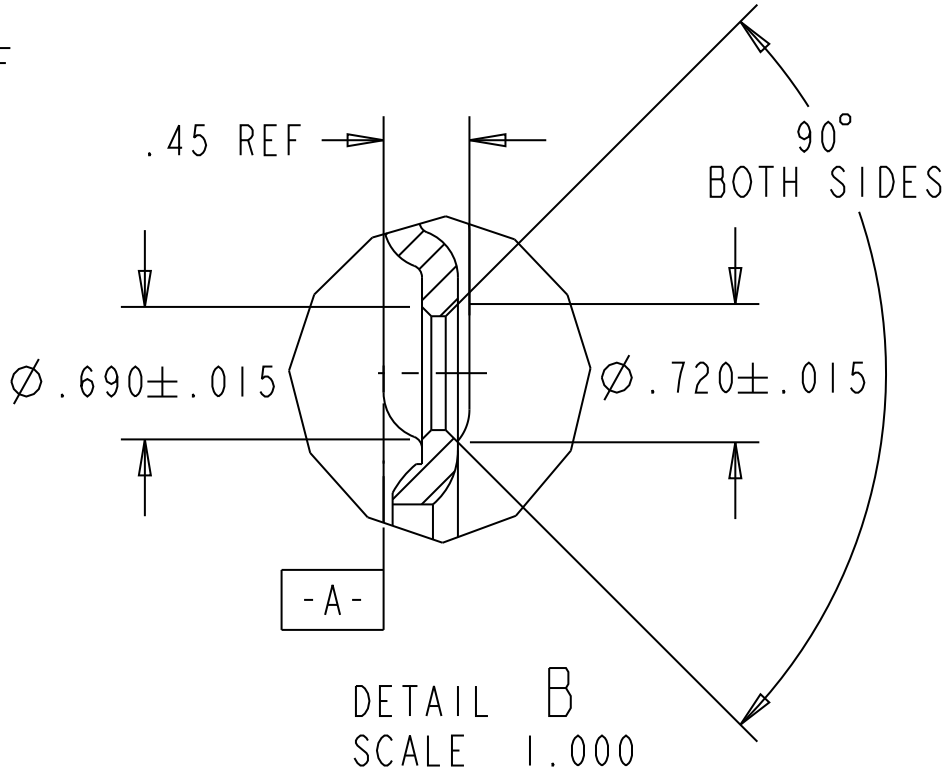
Ø 15.968
REF.

1.57 REF

1.13 REF

1.58 REF

SECTION A-A




CAPACITY LB [KG]	SPEED MPH [KM/H]	APPLICATION
3500 [1585]	20 [32]	IMPLEMENT

This document, the information contained in this document and its subject matter are the property of the GKN Wheels Division of GKN plc. The information contained in this document is disclosed in strict confidence and it shall not be used, disclosed to others or reproduced without the express written consent of the GKN Wheels Division of GKN plc. If consent is given for reproduction of this document in whole or in part, this notice shall appear on any such reproduction. This document (with any and all reproductions and associated images) must be returned to the GKN Wheels Division of GKN plc immediately upon request.



GKN WHEELS TELFORD
TELFORD, SHROPSHIRE
ENGLAND
GKN WHEELS NAGBØL
LUNDERSKOV DENMARK
GKN WHEELS FAD SPA
CARPENEDOLO ITALY
GKN WHEELS ARMSTRONG
IOWA USA

GLOBAL PART NO.

E	KJ	12/18/06	ML	06-807	E1 - FORMAT CHANGED & REDRAWN IN PRO/E E2 - WAS SPOT WELDED							
ISSUE	DRAWN	DATE	APPROVE	ECN NO	CHANGE							
REFERENCES					ENQUIRY NO.		WEIGHT 27.8 LB					
PROTECTIVE FINISH					CUSTOMER		VARIOUS					
AS REQ'D					CUSTOMER NO.		N/A					
MATERIAL		DIMENSION INCH [mm]			REPLACED BY		REVISION					
PROJECTION		CAD-SYSTEM			SUPERSEDES		E					
		GKN WHEELS TELFORD TELFORD, SHROPSHIRE ENGLAND GKN WHEELS NAGBØL LUNDERSKOV DENMARK GKN WHEELS FAD SPA CARPENEDOLO ITALY GKN WHEELS ARMSTRONG TOWA USA			WHEEL 16 X 6LB							
					NO HLS		BOLT CIRCLE		PILOT DIA		HOLE SIZE TYPE	
					6		6.000		4.633		0.593 E	
					OFFSET				+ 1.13			
					GLOBAL PART NO.				DRAWING NO.			
					W62435							