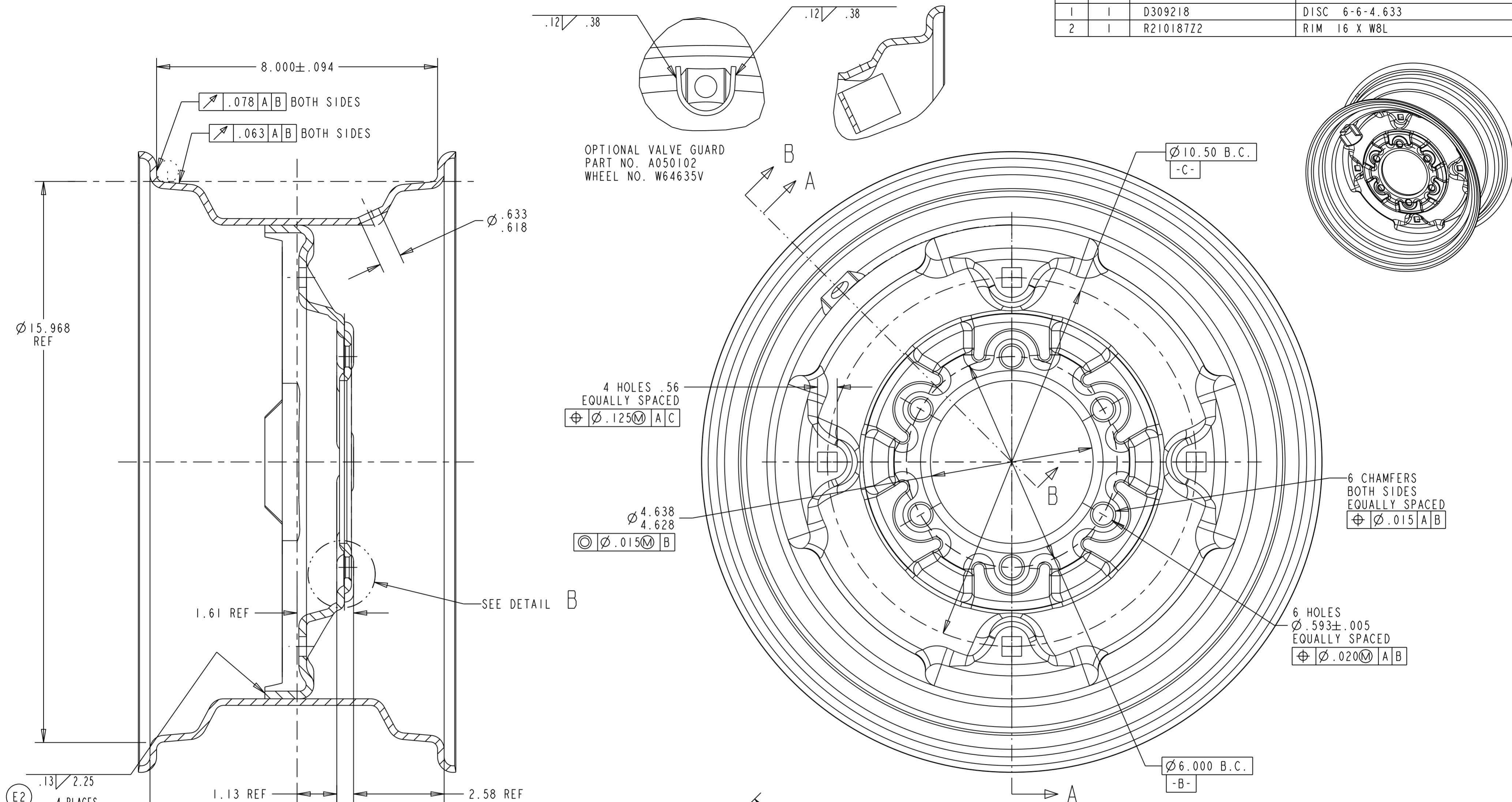


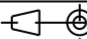

POS	QTY	PART NO.	DESCRIPTION
1	1	D309218	DISC 6-6-4.633
2	1	R210187Z2	RIM 16 X W8L



SAE WHEEL NO: 642 PER SAE J712.

CAPACITY LB [KG]	SPEED MPH [KM/H]	APPLICATION
3800 [1725]	20 [32]	IMPLEMENT

This document, the information contained in this document and its subject matter are the property of the GKN Wheels Division of GKN plc. The information contained in this document is disclosed in strict confidence and it shall not be used, disclosed to others or reproduced without the express written consent of the GKN Wheels Division of GKN plc. If consent is given for reproduction of this document in whole or in part, this notice shall appear on any such reproduction. This document (with any and all reproductions and associated images) must be returned to the GKN Wheels Division of GKN plc immediately upon request.

E	ML	10/09/06	AT	06-737	E1-FORMAT REVISED & REDRAWN IN PRO/E; E2-WAS SPOT WELDED				
ISSUE	DRAWN	DATE	APPROVE	ECN NO	CHANGE				
REFERENCES -					ENQUIRY NO.	WEIGHT 37.4 LB			
PROTECTIVE FINISH					CUSTOMER	VARIOUS			
AS REQUIRED					CUSTOMER NO.	N/A			
MATERIAL -		DIMENSION INCH [mm]		REPLACED BY -	-		REVISION		
PROJECTION 		CAD-SYSTEM PRO/E		SUPERSEDES -		-		E	
 <div>GKN WHEELS TELFORD TELFORD, SHROPSHIRE ENGLAND</div> <div>GKN WHEELS NAGBOL LUNDERSKOV DENMARK</div> <div>GKN WHEELS FAD SPA CARPENEDOLO ITALY</div> <div>GKN WHEELS ARMSTRONG IOWA USA</div>					WHEEL 16 X W8L				
					NO HLS	BOLT CIRCLE	PILOT DIA	HOLE SIZE TYPE	
					6	6.000	4.633	0.593 E	
					OFFSET		+1.13		
GLOBAL PART NO.					DRAWING NO. W64635				