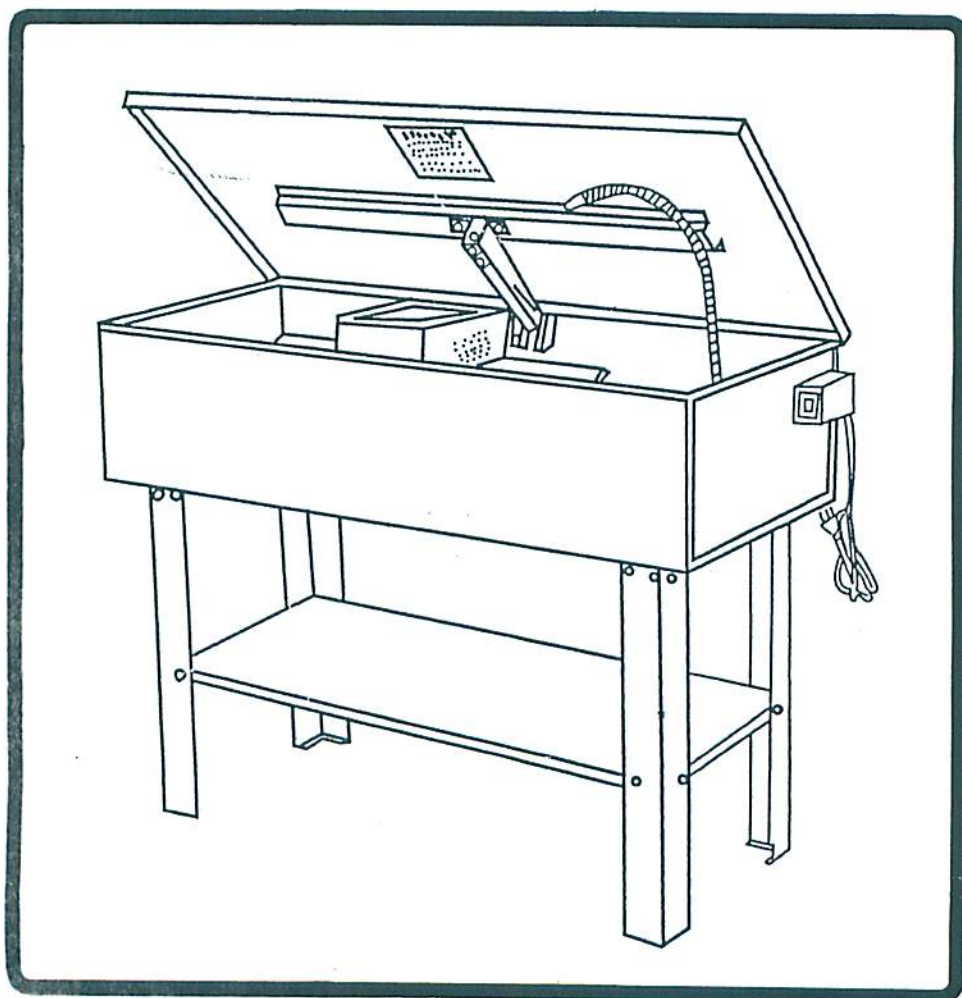


PARTS WASHER

40 - GALLON

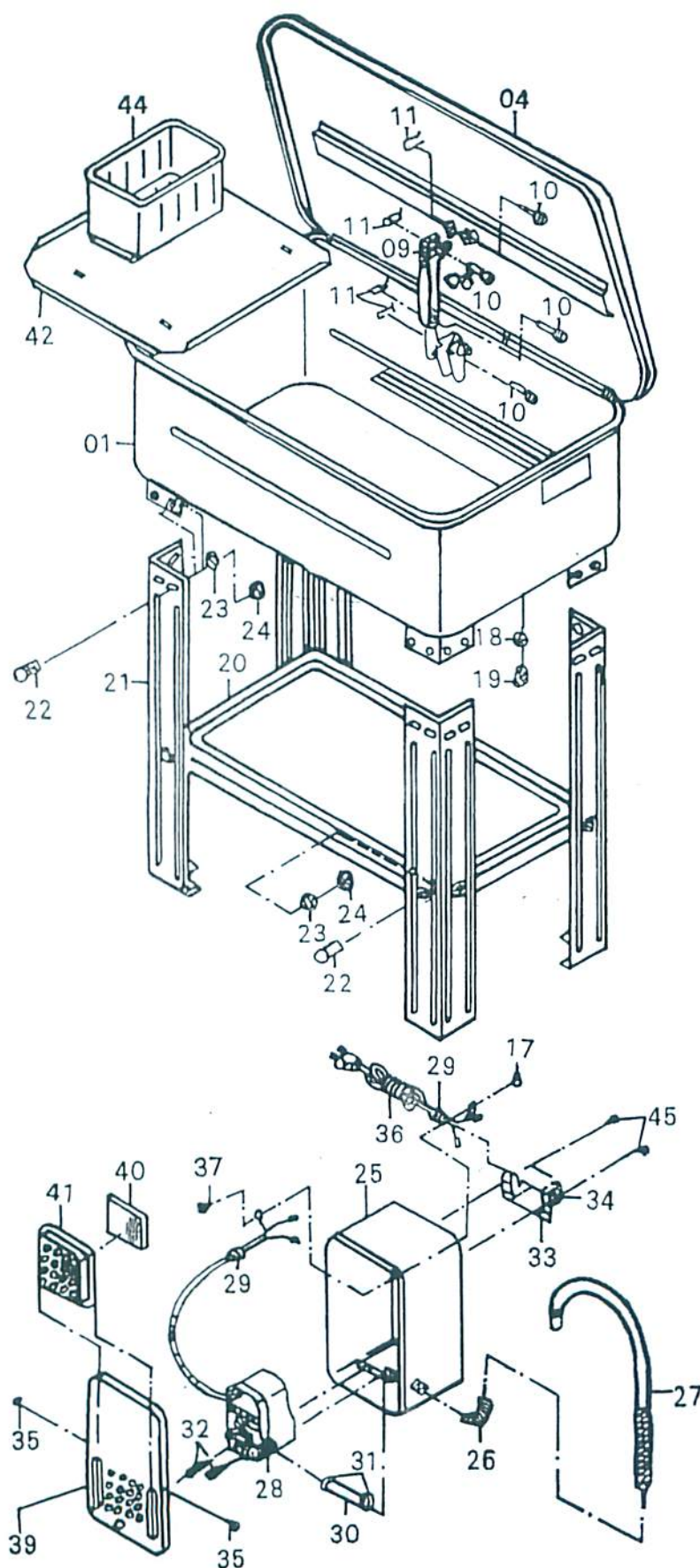
Asc# 39533



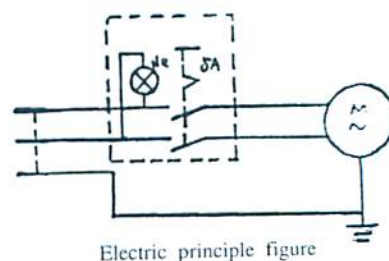
ASSEMBLY INSTRUCTIONS

1. Remove machine from carton and inspect for any visual damage.
2. Remove parts inside the machine.
3. Lay clean cardboard on floor and lay machine on its lid. (Make sure you hold cover closed when laying machine on its lid.)
4. Mount four legs on brakets with M6X12 philips head screws and M6 Keps nuts.
NOTE :DO NOT tighten.
5. Place lower shelf between legs with flat surface down and attach to legs with M6X12 philips head serews and M6 keps nuts.
6. With legs pressed tight against lower shelf , tighten all screws to lower shelf .
7. Tighten all screws installed in step 4.
8. Stand machine up, be careful to hold lid closed.
9. Place work shelf and basket into the machine.
- 10 . Mount pump assembly into slot on the side of the machine Place filter screen in position.
11. Plug machine into standard 110 Volt 60 Hz grounded outlet and fill with proper amount of fluid.
12. Turn switch on Fluid should now be flowing from the flexible spigot.

SPECIFICATIONS	Recirculating Parts Washer
Overall Dimensions	1125x520x880mm
Tank Dimensions	1098x520x270mm
Max Solvent Capacity	40 Gallons
Pump Ouatatut Through Hose	50gph
Electriacl Requirements	110 V/60Hz/0.5A
Gross Weight	45kgs



PARTS NO	DESCRIPTION	QTY
01	BODY	1
04	COVER	1
06	SAFETY LEVER	1
09	SAFETY PLATE	1
10	PIN	4
11	SPRING PIN	4
17	NUT	1
18	O - RING	1
19	PLUG	1
20	SHELF	1
21	LEG	4
22	PAN SCREW	24
23	SPRING WASHER	24
24	NUT	24
25	PUMP HOUSING	1
26	ELBOW	1
27	FLEXIBLE PIPE	1
28	PUMP	1
29	FEED THRU	2
30	HOSE	1
31	HOSE CLAMP	2
32	TAPPING SCREW	2
33	SWITCH BOX	1
34	SWITCH	1
35	TAPPING SCREW	2
36	POWER CORD	1
37	PAN SCREW	1
39	PUMP HOUSING COVER	1
40	SCREEN	1
41	COVER SCREEN	1
42	WORK SHELF	1
43	WORK SHELF LEG	2
44	BASKET	1
45	TAPPING SCREW	2



Electric principle figure