

# CAT.1 3-POINT QUICK HITCH

## ASSEMBLY AND OPERATING INSTRUCTIONS



Due to continuing improvements, actual product may differ slightly from the product described herein

# TABLE OF CONTENTS

SAFETY WARNING AND PRECAUTIONS.....	1
SPECIFICATIONS .....	2
MOUNTING INSTRUCTIONS.....	3
INSTALLATION .....	4
OPERATING THE QUICK HITCH.....	5
PRODUCT MAINTENANCE .....	5
QUICK HITCH PARTS LIST.....	6

# SAFETY WARNING AND PRECAUTIONS



## **WARNING**

- When using this tool, basic safety precautions should always be followed to reduce the risk of personal injury and damage to equipment.
- Read all instructions before using this tool.



## **WORK AREA SAFETY**

- Keep work area clean. Use the Hitch on a proper surface located on a flat, level, and solid surface that is capable of supporting the weight of the Hitch and attached implement, plus the load.
- Keep children away. Children must never be allowed in the work area. Do not let them handle machines, tools or extension cords.



## **BEFORE OPERATING**

- Dress properly. Do not wear loose clothing or jewelry as they can be caught in moving parts. Protective, electrically non-conductive clothes and non-skid footwear are recommended when working. Wear restrictive hair covering to contain long hair.
- Use eye and ear protection and protective clothing. Always wear ANSI approved impact safety goggles. Wear an ANSI approved dust mask or respirator when working around metal, wood, and chemical dusts and mists. Wearing of gloves and protective clothing is recommended.
- Do not overreach. Keep proper footing and balance at all times.
- Stay alert. Watch what you are doing, use common sense. Do not operate any tool when you are tired.
- Do not operate tool if under the influence of alcohol or drugs. Read warning labels if taking prescription medicine to determine if your judgment or reflexes are impaired while taking drugs. If there is any doubt, do not operate the tool.
- Use the right tool for the job. Do not attempt to force a small tool or attachment to do the work of a larger industrial tool. There are certain applications for which this tool was designed. It will do the job better and more safely at the rate for which it was intended. Do not modify this tool and

do not use this tool for a purpose for which it was not intended.

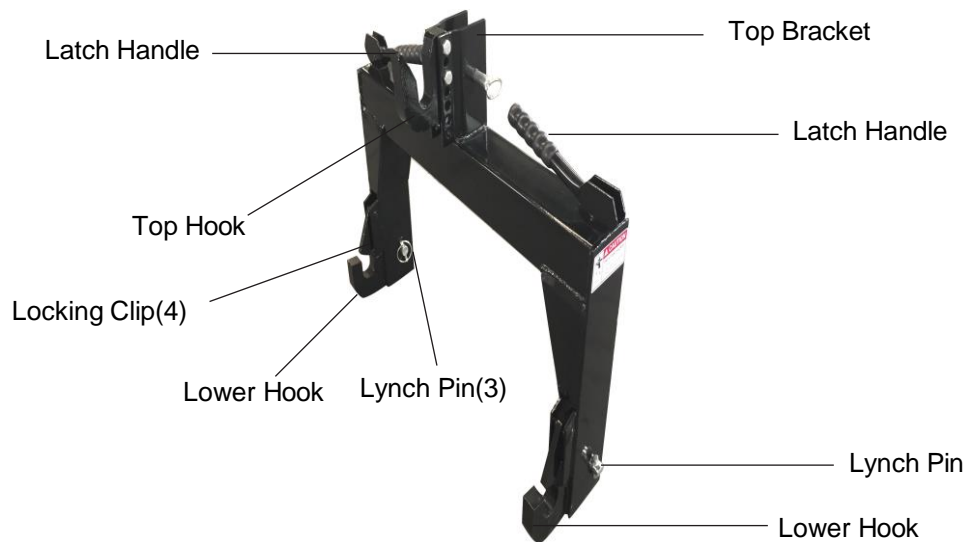
- Check for damaged parts. Before using any tool, any parts that appears damaged should be carefully checked to determine that it will operate properly and perform its intended function. Check for alignment and binding of moving parts; any broken parts or mounting fixtures; and any other condition that may affect proper operation. Any part that is damaged should be properly repaired or replaced by a qualified technician.
- **WARNING:** The warnings, cautions and instructions discussed in this instruction manual cannot cover all possible conditions and situations that may occur. It must be understood by the operator that common sense and caution are factors which cannot be built into this product, but must be supplied by the operator.

## **SPECIFICATIONS**

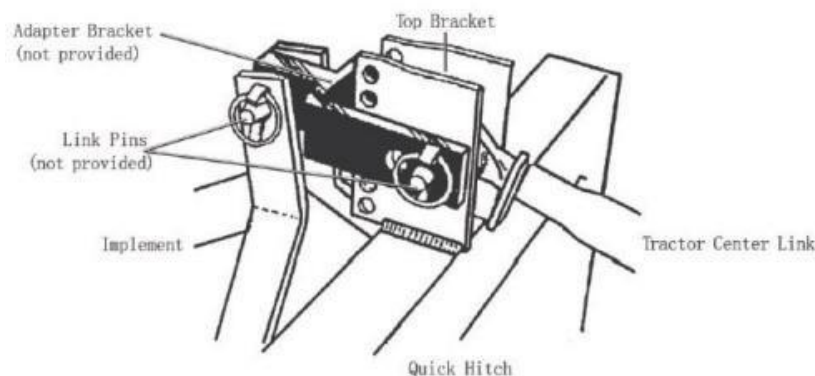
Our Quick Hitch were designed to make changing implements easier, safer, and faster. Thus eliminating lifting and moving heavy implements into position for mounting to the tractor. You can safely change implements in seconds.

- Operator can engage and secure implements from the tractor seat.
- Reduces chance of personal injury as there is no need to put yourself between the tractor and the implements, except for attaching drive shafts.
- Automatic lock with quick release handles.
- Heavy all steel construction.

# MOUNTING INSTRUCTIONS



1. The Top Hook is bolted on the Bracket. This is adjustable to give a center of top hook pin position to center of bottom pin position from 15 inches to 18-1/4 inches.
2. If the implement is not of ASAE specifications, use an Adapter Bracket (provided as optional) to mount it to the Quick Hitch as illustrated below. Remove the Top Hook by taking out the two Hex Bolts (230002), Lock Washers (230007), and Nuts (230006). Save the hardware.
3. Slide the Adapter Bracket (provided as optional) over the Top Bracket of the Quick Hitch, and attach the Top Link Pin.
4. For most implement, the front hole (closest to the implement) is recommended for the best vertical alignment.
5. Attach the implement to the Adapter Bracket tab with a Top Link Pin (not provided)
6. Check that all connections are tight before starting the work task.

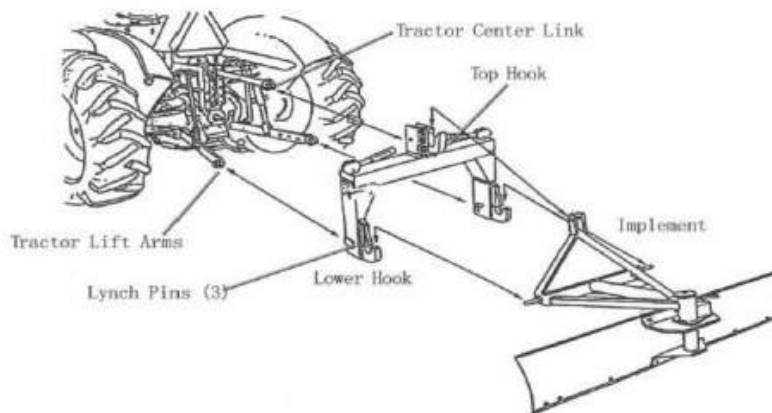


# INSTALLATION

NOTE: It is recommended that two people assist in the setting up of the Quick Hitch.

1. Fasten the Quick Hitch to the tractor's lift arms using the Solid Link Pins and the Lynch Pins (3). See the illustration.
2. Fasten the Tractor's Center Link to the Top Bracket of the Quick Hitch using a Top Link Pin.
3. Install a common Top Link Pin on the implement's top framework for the quick hitch's Top Hook to grab on. NOTE: This Top Hook is adjustable.
4. Insert the implement's lower mounts inside the hitch hooks and lock by pressing down the latch handles.
5. Check that all connections are tight before starting the work task.

NOTE: If the tractor has stabilizer arms, they will not fit into the Quick Hitch mounting area along with the lift arms. For this reason, use stabilizer chains or some other common, longer mounting pin (not provided) to fasten the Quick Hitch to the tractor.



## Optional parts



Adapter Bracket



Bushing

## **OPERATING THE QUICK HITCH**

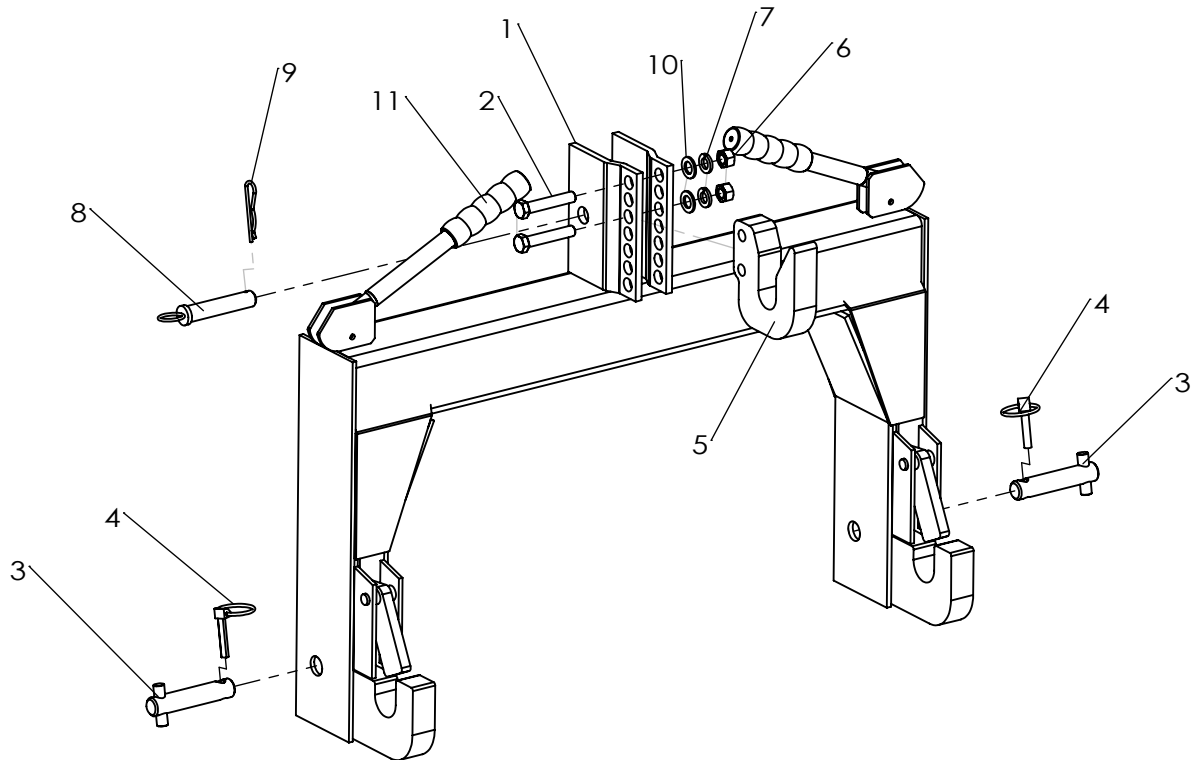
1. With latch handles lowered, back Quick Hitch points against implement mounting pins.
2. Raise tractor 3-point hitch to engage implement draw pins.
3. Your implement is secured without smashed toes or strained back.
4. Raise latch handles and reverse this sequence to disconnect.

NOTE: If light weight implement is being used, latch handles may have to be raised to properly engage implement.

## **PRODUCT MAINTENANCE**

- Remove adjusting keys and wrenches. Check that keys and adjusting wrenches are removed from the tool or machine work surface before plugging it in.
- For your safety, service and maintenance should be performed regularly by a qualified service technician.
- Store idle equipment. When not in use, tools must be stored in a dry location to inhibit rust. Always lock up tools and keep out of reach of children.
- Maintain tools with care. Keep tools clean for better and safer performance. Follow instructions for lubricating and changing accessories.

## CAT.1 QUICKHITCH PARTS LIST



REF NO.	PART NO.	DESCRIPTION	Q'TY
1	230001	Main Frame Weldment	1
2	230002	Bolt M12×65	2
3	230003	Solid Link Pin	2
4	230004	Lynch Pin	2
5	230005	Top Hook	1
6	230006	Nut M12	2
7	230007	Lock Washer Ø12	2
8	230008	Top Link Pin	1
9	230009	Hair Pin	1
10	230010	Flat Washer Ø12	2
11	230011	Rubber Handle	2