

# 3-POINT GRADER BLADE

## Operation and Parts Manual



Due to continuing improvements, actual product may differ slightly from product described herein

## **CAUTION**

**THE FOLLOWING SAFETY PRECAUTIONS SHOULD BE THOROUGHLY UNDERSTOOD BEFORE ATTEMPTING TO BEGIN ASSEMBLING THIS MACHINE**

1. Select an area for assembly that is clean and free of any debris which might cause persons working on the assembly to trip.
2. Do not lift heavy parts or assemblies. Use crane jack, tackle, fork trucks or other mechanical device.
3. Never put hands, or any part of body, under blocked up assemblies if at all possible.
4. After completing assembly, thoroughly inspect the machine to be sure that all nuts, bolts, hydraulic fittings or any other fastened assemblies have been thoroughly tightened.
5. Before operating equipment—If you have any questions regarding the proper assembly or operations, contact your dealer or the manufacturer.

## **ASSEMBLY**

1. Unpack the Grader Blade from shipping box and check if there are any parts missed.
2. Assemble Cutting Edge (2) to the Moldboard (21)
3. Assemble Mounting Weldment (6) to the Moldboard (21)
4. Install the Main Frame Weldment (15) to the Mounting Weldment (6)
5. Then assemble the Side Bar (20) and Brace (12) to Main Frame Weldment (15)

## **Important Safety Information!**

Working with unfamiliar equipment can lead to careless injuries. Read this manual and the manual for your tractor before assembly or operating, to acquaint yourself with the machine. It is the Grader Blade owner's responsibility, if this machine is used by any other person other than yourself, is loaned or rented, to make certain that the operator is instructed in safe and proper use.

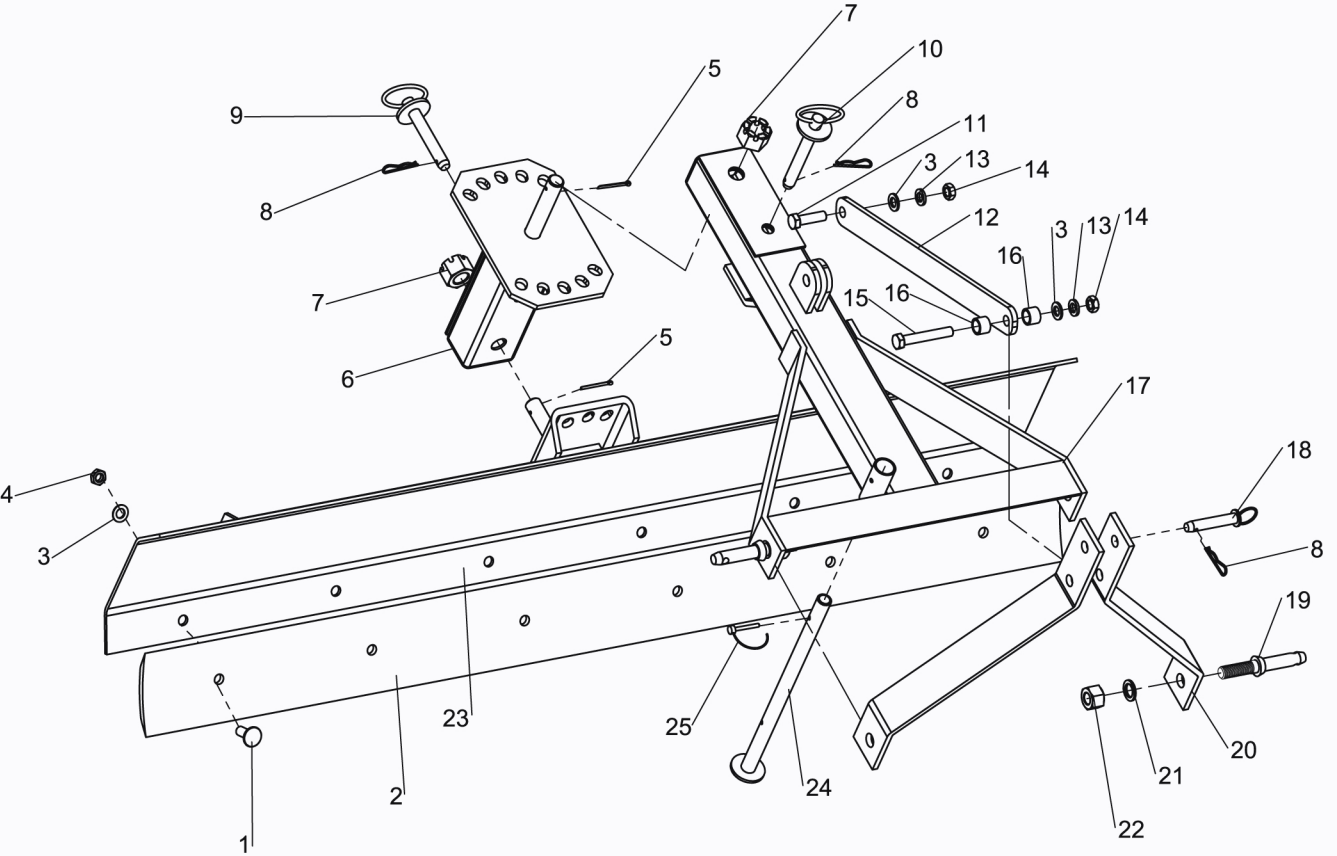
Most accidents occur because of neglect or carelessness. Keep all helpers and bystanders twenty-five (25') from an operating box scraper. Only properly trained people should operate this machine.

Personal protection equipment including safety glasses, safety shoes, and gloves are recommended during assembly, installation, operation, adjustment, maintaining, repairing, removal, or moving the Grader Blade.

Never place any part of your body where it would be in danger if movement should occur during assembly, installation, operation, maintaining, repairing, removal, or moving the Grader Blade. Before you operate the Grader Blade, check over all pins, bolts and connections to be sure all are securely in place. Replace any damaged or worn parts immediately.

Do not allow anyone who is not familiar with the safety rules and operation instructions to use this Grader Blade.

# 3-Point Grader Blade Parts Diagram & Parts List



REF NO.	PART NO.	DESCRIPTION	SPECIFI CATION	Q'TY	REF NO.	PART NO.	DESCRIPTION	SPECIFI CATION	Q'TY
1	180401	Carriage Bolt M16×40	4'	4	8	180008	Hair Pin Φ5		3
	180501		5'	5	9	180009	Pin Φ18×120		1
	180601		6'	6	10	180010	Pin Φ18×150		1
	180701		7'	7	11	180011	Bolt M16x55		1
2	180402	Cutting Edge	4'	1	12	180012	Brace		1
	180502		5'	1	13	180013	Lock Washer 16		2
	180602		6'	1	14	180014	Nut M16		2
	180702		7'	1	15	180015	Bolt M16x100		1
3	180403	Flat Washer 16	4'	6	16	180016	Steel Collar		2
	180503		5'	7	17	180017	Main Frame Weldment		1
	180603		6'	8	18	180018	Pin Φ19×95		2
	180703		7'	9	19	180019	Hitch Pin		2
4	180404	Lock Nut M16	4'	4	20	180020	Side Bar		2
	180504		5'	5	21	180021	Lock Washer 22		2
	180604		6'	6	22	180022	Nut M22		2
	180704		7'	7	23	180023	Moldboard		1
5	180005	Cotter Pin Φ5×50		2	24	180024	Support Bar (Optional)		1
6	180006	Mounting Weldment		1	25	180025	Lock Pin Φ6		1
7	180007	Castle Nut		2					