

Assembly Manual for Pop-up Canopy



Step 1
Take your pop-up canopy frame out of the bag and place it in the center of the set-up area. Have your partner get on the opposite corner of the frame.



Step 2
Pull the canopy over the frame and line up the corners.



Step 3
Grab the center bracket and pull apart the frame until it is almost completely extended.



Step 4
Ensure the legs are straight. Push the corners until they lock into place. Make sure your hands and fingers are placed where they will not get pinched.



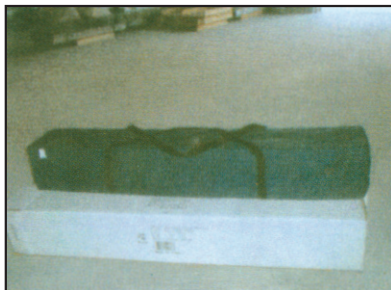
Step 5
Velcro the canopy to the frame, then extend the legs until they lock into place at the desired height.



Step 6
Clip the corners of the canopy to the feet of the frame and enjoy.



Take Down & Storage:
First, push in the locking button on all four corners of the frame and slide the bracket down. The canopy should then easily collapse and can be returned to the bag for storage. Always make sure you Pop-up Canopy is completely dry before storing to avoid mildew.



Collapses into its own portable carrying case.

WARNING


KEEP ALL FLAME AND HEAT SOURCES AWAY FROM THIS TENT FABRIC

This tent meets the flammability requirements of the ISO 5912 and CPAI-84. The fabric may burn if left in continuous contact with any flame source. The flame retardant properties will diminish with use over a period of time. The application of any foreign substance to the tent fabric may render the flame-retardant properties ineffective. Do not use combustible materials inside this tent.

Maintain adequate ventilation at all times.
Failure to maintain access to fresh air can result in death by suffocation.

Before using this product, carefully read and follow all warnings and the instruction manual provided.

Failure to follow these directions can cause an unsafe situation leading to severe injury or death.

 **WARNING: DO NOT USE DURING BAD WEATHER OR LIGHTING STORMS.**

Distributed by Direct Distributors, Inc.
Garner, NC 27529 USA | AgriSupply.com
Made in China