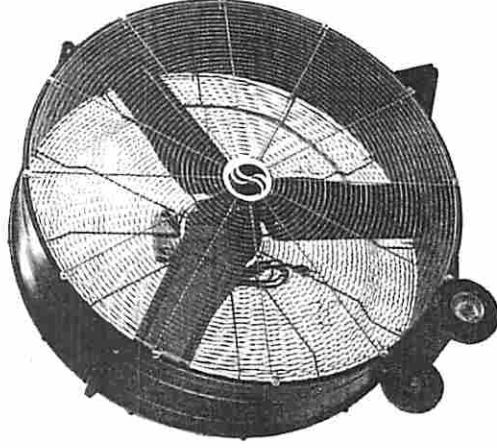




HIGH VELOCITY DRUM FAN
OWNER'S MANUAL



MODELS

10380

HVT-30C

10255

HVT-36C

8421

13
15



READ AND SAVE THESE INSTRUCTIONS

CAUTION: Read and follow all instructions before operating fan.

Do not use fan if any part is damaged or missing.

WARNING:

- To reduce the risk of fire or electrical shock, do not expose to water or rain.
- To reduce the risk of fire or electrical shock, do not use this fan with any solid state speed control device.
- Automatically operated device - To reduce the risk of injury, disconnect from power supply before servicing.
- If the power supply cord is damaged, contact your local service centre or a qualified electrician to install an appropriate replacement cord to prevent any injury or damage.
- The appliance does not apply to be used in locations where special conditions prevail, such as the presence of a corrosive or explosive atmosphere (dust, vapour or gas).
- This appliance is not intended for use by persons (including children) with reduced physical, sensory or mental capabilities, or lack of experience and knowledge, unless they have been given supervision or instruction concerning use of the appliance by a person responsible for their safety.
- Children should be supervised to ensure that they do not play with the appliance.

RULES FOR SAFE OPERATION:

1. Never insert fingers or any other objects through the grill guard when fan is in operation.
2. Disconnect the fan from its power source when moving from one location to another.
3. Disconnect the fan from its power source when removing guards for cleaning.
4. Be sure fan is on a stable, flat surface when in operation.
5. Do not use fan in windows. Rain and moisture may create electrical hazard.
6. Close supervision is necessary when this fan is used near children, the elderly and pets.
7. Do not place the fan near an open flame, cooking or heating appliance, or hot surface.
8. This fan should not be operated outside.

CAUTION: Do not alter the fan's assembly.

WARNING: Be sure that both front and rear guard screws are completely tightened in locking position before operation.

OPERATING INSTRUCTIONS

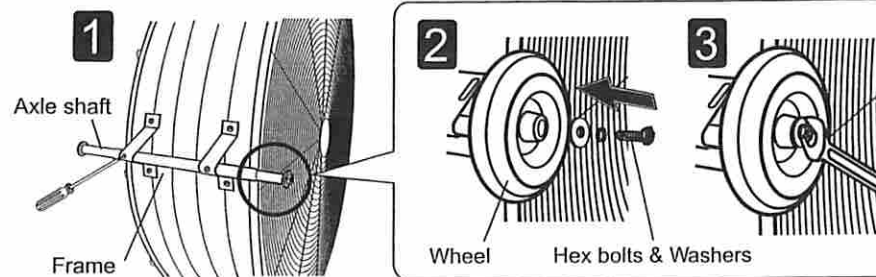
SPEED CONTROL:

HVT-30C: Select air speed by setting switch to either HIGH(3) - MEDIUM(2) - LOW(1) - OFF(0).

HVT-36C: Select air speed by setting switch to either HIGH(2) - LOW(1) - OFF(0). It is normal for the motor to feel warm to touch after continuous operation.

This fan features a thermostat that will automatically shut off should it overheat for any reason. If this happens, immediately unplug the fan from the outlet.

WHEEL ASSEMBLY INSTRUCTIONS



1. Insert axle shaft through hole in frame. Align holes in axle and frame and secure screws and washers as shown.
2. Slide in each wheel over end of each axle shaft and secure with hex bolts and washers.
3. Tighten fasteners securely.

CLEANING

WARNING: Unplug from electrical supply source before cleaning.

1. Use soft damp cloth to clean, then wipe with dry cloth.
2. Do not use a cleaning solution that is harmful to paints or plastics.
3. Do not bend the blades.

IMPORTANT:

Surges in electrical power or excessive heat may cause the fan to turn off. Wait approximately 15 minutes for the fan to resume operation.

RATING

HVT-30C	# 10380	120V~ 60Hz	350W
HVT-36C	# 10255	120V~ 60Hz	400W

For Questions and Assistance, please contact us at:
www.help2uonline.com

- a) Do not operate any fan with a damaged cord or plug. Discard fan or return authorized service facility for examination and/or repair.
- b) Do not run cord under carpeting. Do not cover cord with throw rugs, runner similar coverings.
Do not route cord under furniture or appliances. Arrange cord away from traffic area and where it will not be tripped over.