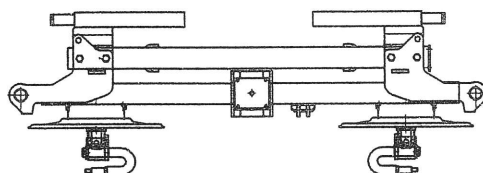


MH 540 T

ASSEMBLING NOTE

950300
950829

- 1 EACH CRATE CONTAINS ONE TEDDER. LEAVE THE MAIN BODY IN THE CRATE AND REMOVE ALL OTHER PARTS FROM IT



MAIN BODY SEEN FROM THE BACK



PLEASE PAY ATTENTION THAT THE MAIN BODY CAN EASILY FLIP OVER HARMING PEOPLE AND DAMAGING PARTS SO BEFORE DOING ANYTHING ELSE SECURE IT

2 HOW TO ASSEMBLE THE LATERAL ARMS

LEFT AND RIGHT ARMS ARE ALREADY MOUNTED YOU NOW NEED TO COUPLE THEM TO THE MAIN BODY
HOLD UP THE LEFT ARM AT SAME HEIGHT OF THE MAIN BODY AND REMOVE THE 2 AXES 950191

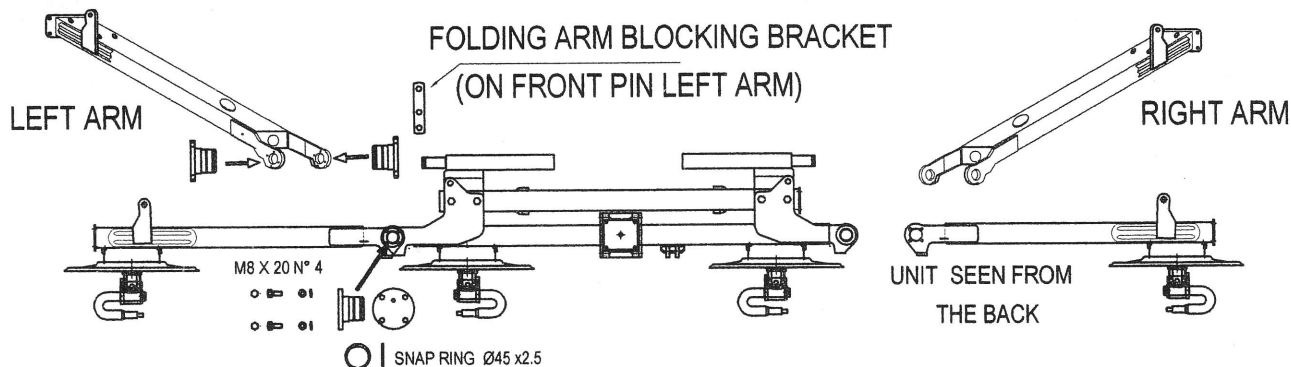
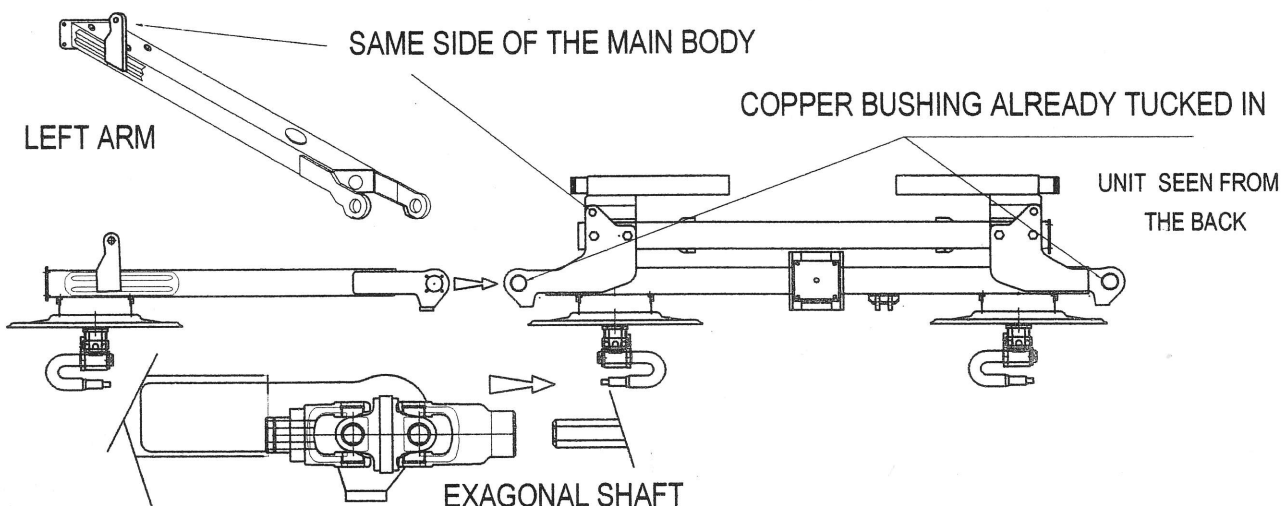
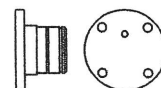
PLACED IN THE HINGE (PAY ATTENTION TO THE POSITIONS OF THIS BRACKET )

GREASE THE DOUBLE JOINT AND SLIDE IT IN ONTO THE HEXAGONAL SHAFT (GOOD GREASING IS REQUIRED)

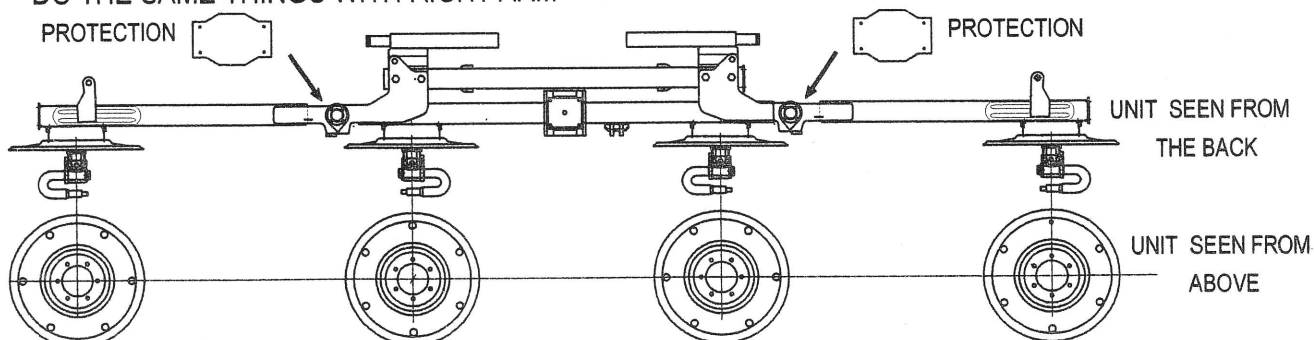
TUCK BACK IN THE AXES 950191 AND FIX THEM WITH SCREWS M8X20 AND M8X25 FOR BRACKET  ,

SNAP RING Ø45X2.5 AND ALL SPACER

950191



DO THE SAME THINGS WITH RIGHT ARM



PLEASE PAY ATTENTION TO THE CORRECT POSITIONING OF THE 4 PLATES
HOLES MUST BE POSITIONED AS THEY ARE IN THE DRAWING

950300
950829

3

HOW TO ASSEMBLE CYLINDERS KIT AND SECURITY HOOKS

CYLINDERS ARE EQUIPPED WITH THEIR SECURITY HOOKS AND HIDRAULIC CIRCUIT
LOOSE SCREWS M16X200 FIXING THE FLIPPING ARMS BUMPER, NOW YOU CAN MOUNT THE CYLINDER
AND CLOSE SCREWS M16X200

M16 X 200

CYLINDERS

SECURITY
HOOK

PULL OFF THE PLATE AND PULL OFF THE PIN
FROM THE CYLINDER FORK

PLACE THE CYLINDER ON THE FRAME AND TUCK BACK IN THE PIN
FIX THE PIN WITH HIS WASHER AND COTTER PIN

PLEASE PAY ATTENTION THAT PLATE MUST STAY ON DRAWBAR SIDE!

EXTEND THE CYLINDER AND FIX IT TO HIS BRACKET ON THE ARM EDGE

UNIT SEEN FROM
THE BACK

PIN ON CYLINDER
STEM SIDE

Ø 21 x 37 x 3
COTTER
PIN

DO THE SAME ON THE OTHER SIDE

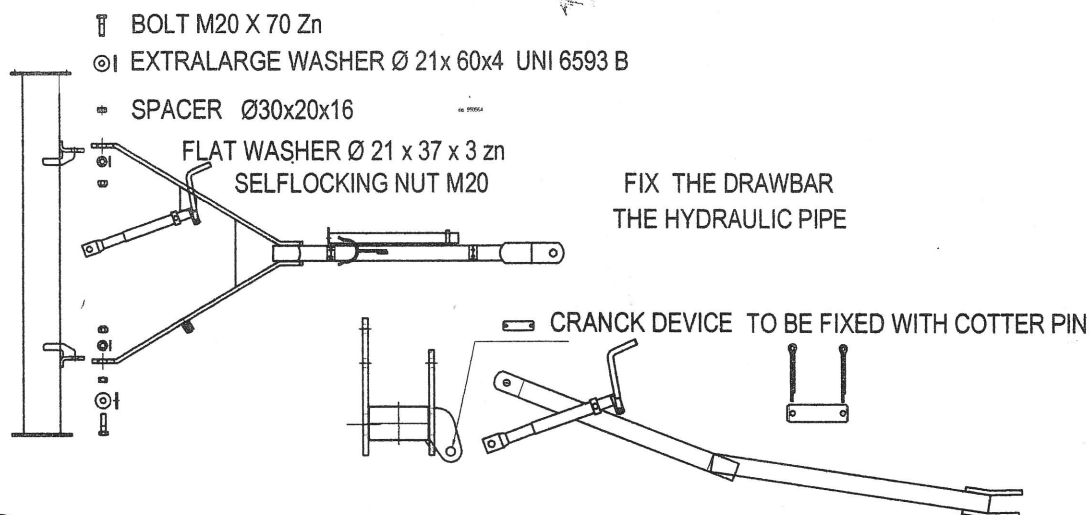
4

LIFT UP THE TEDDER

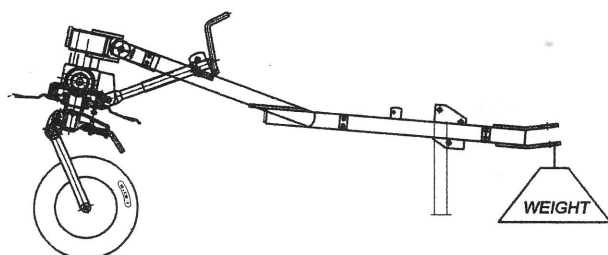
5

FIX THE WHEELS

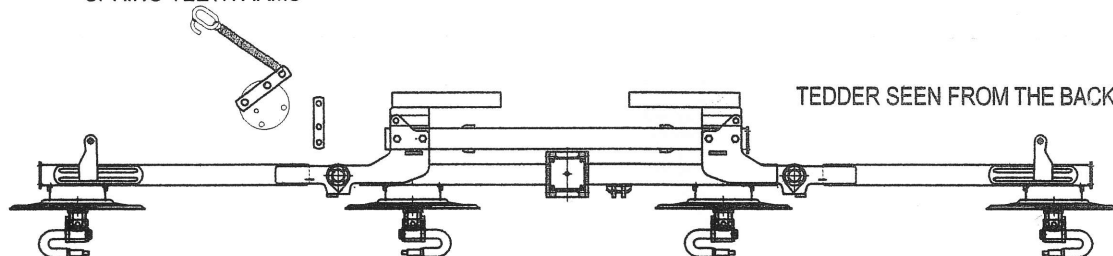
FIX THE DRAWBAR (SEE ALL DIFFERENT PIECES IN THE DRAWING)



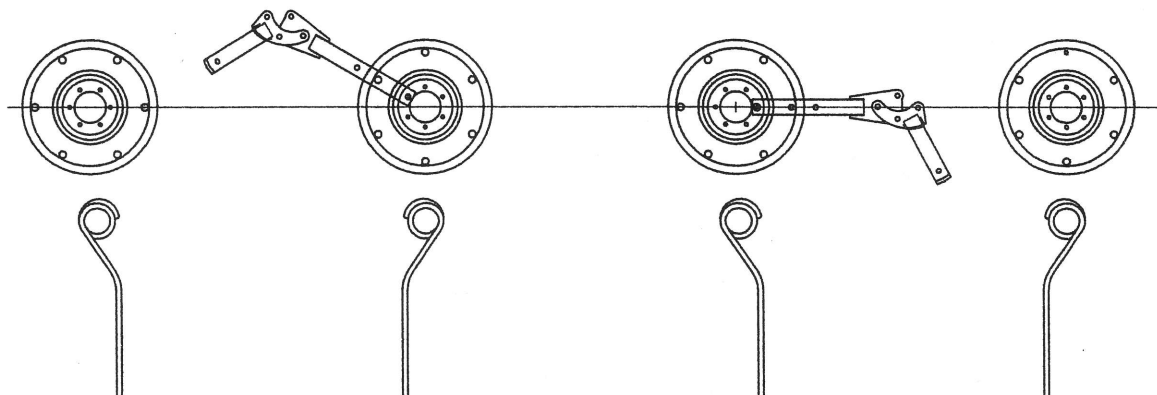
5 SECURE THE TEDDER AGAINST FLIPPING OVER THEN,
FINISH THE ASSEMBLING



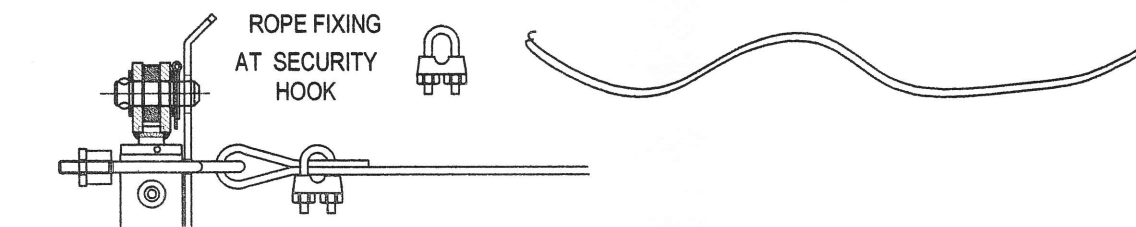
SPRING TEETH ARMS



CORRECT POSITIONING OF THE FOLDABLE SPRING TEETH ARM

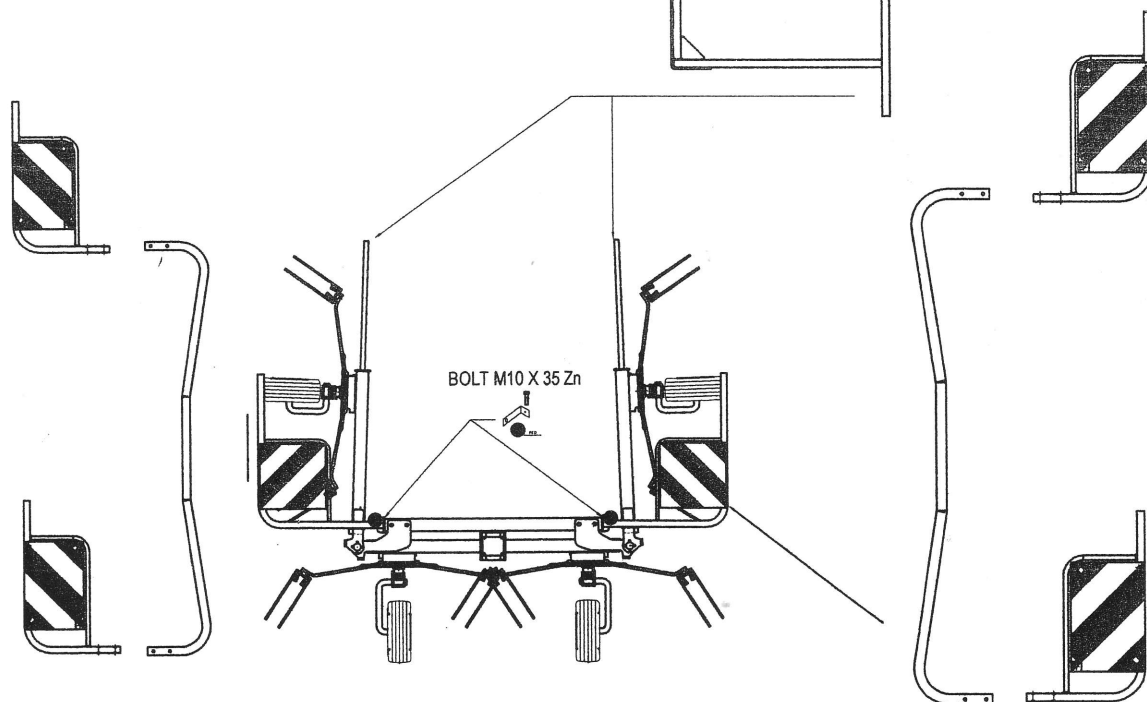


SPRINGS FIXING TEDDER SEEN FROM THE BACK



6

FIX THE SECURITY FRAME

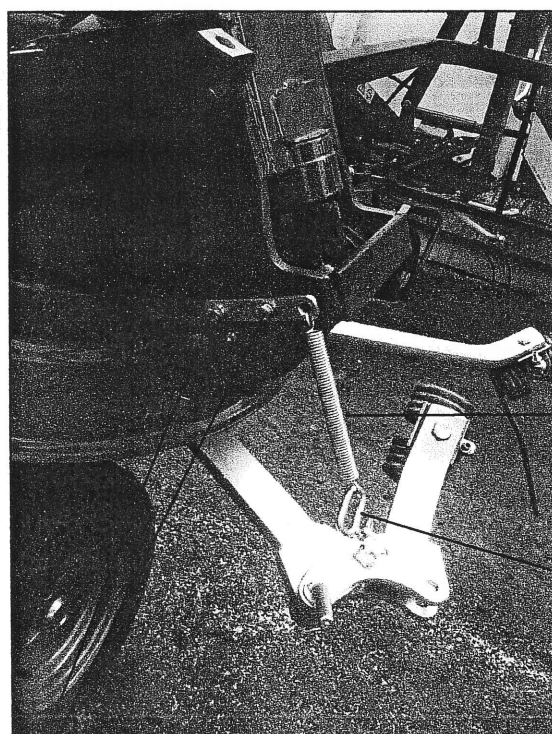
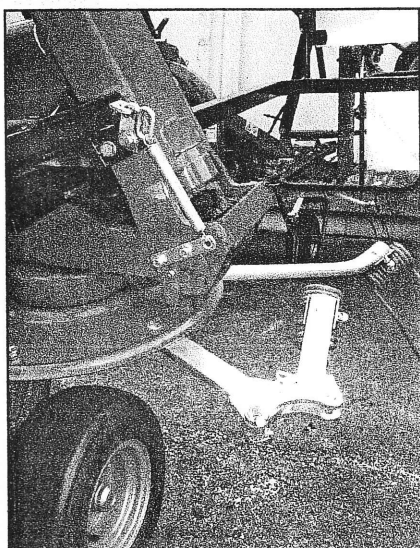


ROAD CARRIAGE:FOLDABLE SPRING SUPPORT ARM KIT

ROAD CARRIAGE POSITION
PREVENTS THE ROTATION ON THE FOLDABLE ARM

TEDDER LEFT SIDE

SPRING POSITION AT REST
FIXED TO BOLT M10 FIXED ON THE ARM



SPRING

METAL RING WITH HOOK

SCREW M8X25

