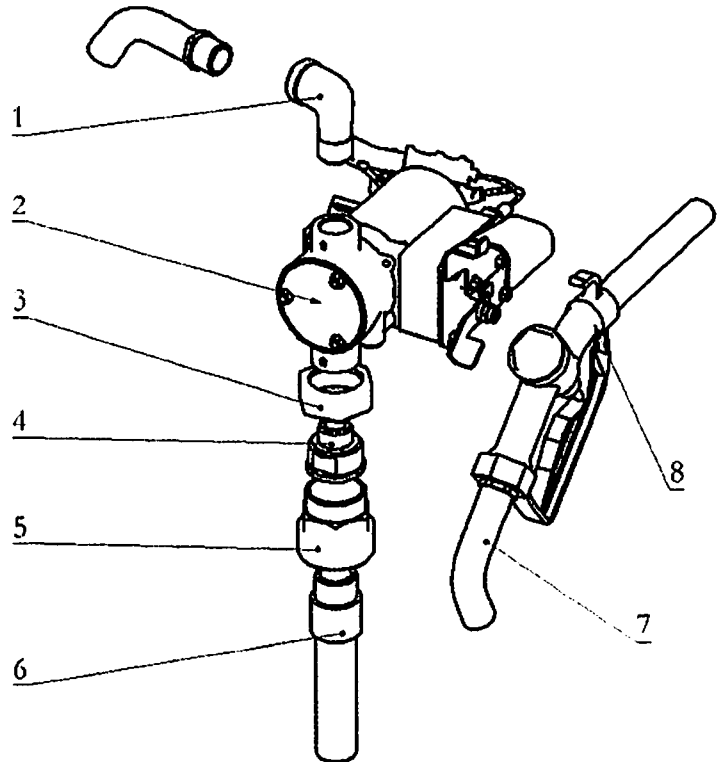


## MAINTENANCE

Under normal working conditions the noise emission from all models does not exceed the v of 80 db at a distance of 1 meter from the electric pump.

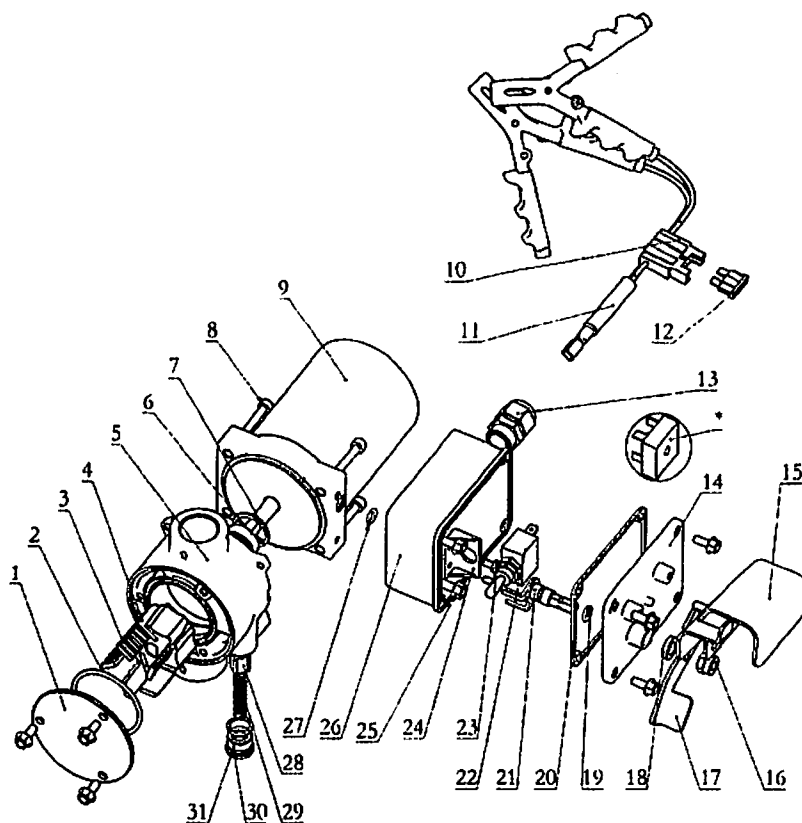
## DIGRAM AND PARTS LIST

### A. FOR KIT



Part No	Component Discription	Quantity
1	90° Elbow	1
2	Fuel pump	1
3	Nut	1
4	Adapter	1
5	Tank Adapter	1
6	Extensible Pipe	1
7	4m Delivery hose	1
8	Manual nozzle	1

## B. FOR SINGLE PUMP



No.	Description	Qty.	No.	Description	Qty.
1	Front cover	1	17	Switch connector	1
2	O-ring	1	18	Washer	1
3	Blade	1	19	O-ring	1
4	Rotor	5	20	Seal	1
5	Pump chamber	1	21	Fork for turning switch	1
6	Seals	1	22	Switch	1
7	Spring collar	1	23	Bolt	1
8	Hex bolt	1	24	Switch bracket	2
9	Electric Motor	4	25	Hexagon flange bolts	1
10	Fuse carrier	1	26	Junction box	11
11	DC Power cable	1	27	O-ring	1
12	Fuse	1	28	Valve	1
13	Cable clip	1	29	Spring	1
14	Junction box cover	1	30	O-ring	1
15	Nozzle holder	1	31	Sealed screw	1
16	nylon self-locking screw	1			