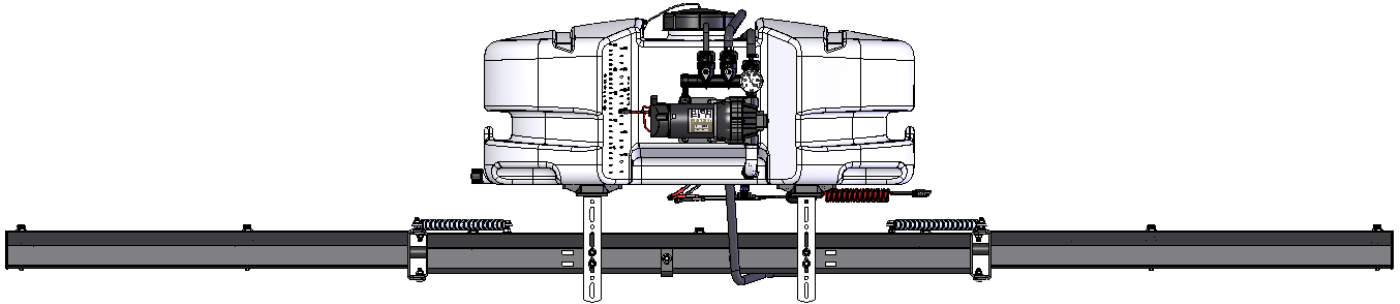


OWNER'S MANUAL

Model: ATV-25-71-QR (5302321)

(25 Gallon 'Deluxe' Lawn & Garden/ATV Sprayer)



**BEFORE RETURNING THIS PRODUCT
FOR ANY REASON, PLEASE CALL**

1-800-831-0027

**IF YOU SHOULD HAVE A QUESTION OR
EXPERIENCE A PROBLEM WITH YOUR
FIMCO INDUSTRIES PRODUCT:**

1-800-831-0027

**BEFORE YOU CALL, PLEASE HAVE THE
FOLLOWING INFORMATION AVAILABLE:
SALES RECEIPT & MODEL NUMBER. IN MOST
CASES, A FIMCO INDUSTRIES EMPLOYEE CAN
RESOLVE THE PROBLEM OVER THE PHONE.**

General Information

Thank you for purchasing this product. The purpose of this manual is to assist you in operating and maintaining your lawn & garden/ATV sprayer. Please read it carefully, as it furnishes information which will help you achieve years of trouble-free operation.

Warranty/Parts/Service

Products are warranted for one year from date of purchase against manufacturer or workmanship defects.

Commercial users have a 90 day warranty.

Your authorized dealer is the best source of replacement parts and service. To obtain prompt, efficient service, always remember to give the following information...

- Correct Part Description and/or part number.
- Model number/Serial number of your sprayer.

Part descriptions and part numbers can be obtained from the illustrated parts list section(s) of this manual.

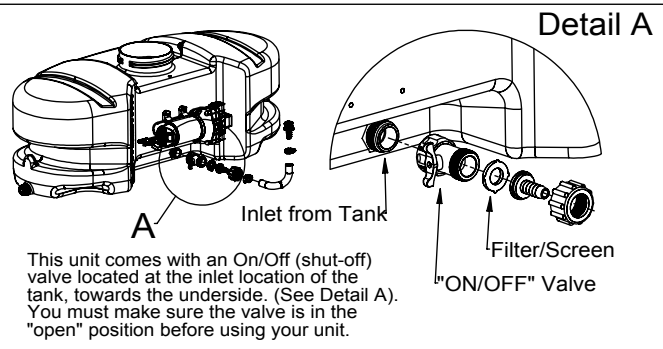
Whenever you need parts or repair service, contact your distributor/dealer first. For warranty work, always take your original sales slip, or other evidence of purchase date, to your distributor/dealer.

Technical Specifications

- 25 Gal. Corrosion-Resistant Polyethylene Tank
- 12 Volt Diaphragm Pump, 3.8 g.p.m. - 45 p.s.i.
- 15 Ft. Handgun Hose
- 25 Ft. max. vertical throw, 35 Ft. max. horizontal throw
- Pressure Gauge (Liquid-Filled, 0-100 p.s.i.)
- "No Drip" Check-Valve Diaphragm Nozzles
- Pressure Adjust Line w/ON-OFF Control Valve

Caution: Always check the vehicle load rating before using this sprayer. The loaded weight of the sprayer and boom assembly is about 250 lbs. when the tank is full. Care must be taken not to flip the vehicle over backwards, especially when starting or accelerating.

*** IMPORTANT REMINDER ***



www.fimcoindustries.com

1000 FIMCO Lane, P.O. Box 1700, North Sioux City, SD 57049
Toll Free Phone: 800-831-0027 : Toll Free Fax: 800-494-0440

[5008431 (12/14)] Printed in the U.S.A.

Assembly

1. Install the Quick Release Brackets to the tank as shown in the exploded view drawing.
2. Place the tank, with the brackets attached, on your ATV carrier rack. Attach using ratchet straps.
3. Slide the boom mounting brackets into the Quick Release Brackets. Use Cam handles on Quick Release Brackets to secure the boom mounting brackets.
4. Attach the nozzle harness assembly to the boom. Each nozzle body has a brass nut which holds it to the steel boom member. Make sure these are tightened securely.
5. Attach the boom assembly to the boom mounting brackets at desired height. Be sure to center boom assembly.
6. Thread the pressure gauge into the manifold assembly. Use teflon tape or thread sealant to insure no leaks.
7. Remove the drain plug assembly and handgun clips from the parts bag. Attach them to the tank as shown in the exploded view drawing.
8. Connect the wiring harness to the rear of the pump. Clip the alligator clip ends to a fully charged 12 Volt battery. Red wire to the 'Hot' connection, and black wire to the 'Ground'.

Testing the Sprayer

NOTE:

It is VERY important for you to test your sprayer with plain water before actual spraying is attempted. This will enable you to check the sprayer for leaks, without the possibility of losing any expensive chemicals.

Add water to the tank & drive to the starting place for spraying. When you are ready to spray, turn the boom valve to the "on" position. This will start solution spraying from the tips of the boom. The pressure will decrease slightly when the boom is spraying. Adjust the pressure by turning the "ON/OFF" valve lever on the pressure adjust valve.

Read the operating instructions and Initially begin spraying by closing the 'pressure adjust' valve (this is the ON/OFF valve located at the end of your manifold assembly) and opening the boom line valve (this is the 'middle' valve on the manifold). This will enable the air in the line to be eliminated (purged) through all the tips, while building pressure. When everything tests correctly (no leaks, & good pressure), add the desired chemicals to the mixture and water combination and start your spraying operation. Adjust the pressure and spray as you did in the testing procedure.

Conditions of weather and terrain must be considered when setting the sprayer. Do not spray on windy days. Protective clothing must be worn in some cases.

Be sure to read the chemical label(s) correctly!

Tip Chart

Tip Number	Spray Height	Pressure (psi)	Capacity (GPM)	Gallons Per Acre - Based on Water							
				1 MPH	2 MPH	3 MPH	4 MPH	5 MPH	6 MPH	8 MPH	
AIXR11002VP	18"	15	0.12	35.6	17.8	11.8	8.9	7.1	5.9	4.5	
		20	0.14	41.6	20.8	13.8	10.4	8.3	6.9	5.2	
		30	0.17	50.4	25.2	16.8	12.6	10.1	8.4	6.3	
		40	0.20	59.6	29.8	19.8	14.9	11.9	9.9	7.4	
Tip Number	Spray Height	Pressure (psi)	Capacity (GPM)	Gallons Per 1000 Sq. Ft. - Based on Water							
				2 MPH	3 MPH	4 MPH	5 MPH				
AIXR11002VP	18"	15	0.12	.41	.27	.20	.16				
		20	0.14	.48	.32	.24	.19				
		30	0.17	.58	.39	.29	.23				
		40	0.20	.68	.45	.34	.27				

Operation

Your sprayer is equipped with one ON/OFF switches. This is on the wire assembly that you hook up to your battery. The "-" is the "ON" position and the "o" is the "OFF" position for the switch.

In addition to the ON/OFF switch, the pump is equipped with an electronic pressure switch that is factory pre-set for it to shut off at 45 p.s.i.. This switch assembly is the 'square box' on the head portion of the pump.

Always fill the tank with a desired amount of water first, and then add the chemical slowly, mixing as you pour the chemical into the tank. You may use the handgun to spray into the solution in order to mix the chemical and water.

Initially begin spraying by opening the handgun. This will enable the air in the line to be purged through the handgun tip, while building pressure.

The pumping system draws solution from the tank, through the strainer/filter, and to the pump. The pump forces the solution under pressure to the handgun and/or boom nozzles.

- Open the handgun by squeezing the handle lever.
- Rotating the adjustable nozzle tip on the handgun will change the tip pattern from a straight stream to a cone pattern (finer mist).

Calibration

Chemical labels may show application rates in gallons per acre, gallons per 1000 square feet, or gallons per 100 square feet. You will note that the tip chart shows all 3 of these rating systems.

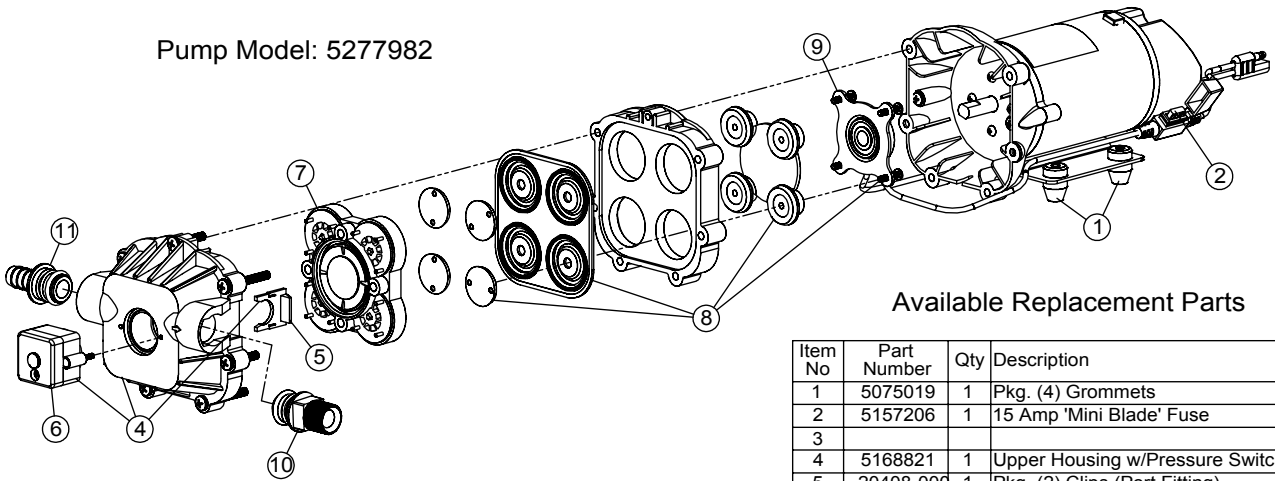
Once you know how much you are going to spray, then determine (from the tip chart) the spraying pressure (PSI), and the spraying speed (MPH).

Determining the proper speed of the pulling vehicle can be done by marking off 100, 200, & 300 feet. The speed chart indicates the number of seconds it takes to travel the distances. Set the throttle and with a running start, travel the distances. Adjust the throttle until you travel the distances in the number of seconds indicated by the speed chart. Once you have reached the throttle setting needed, mark the throttle location so you can stop and go again, returning to the same speed.

Add water and proper amount of chemical to the tank and drive to the starting place for spraying.

Speed Chart			
	Time Required in seconds to travel a distance of:		
Speed in M.P.H. (Miles per Hour)	100 Ft.	200 Ft.	300 Ft.
1.0	68 sec.	136 sec.	205 sec.
2.0	34	68	102
3.0	23	45	68
4.0	17	34	51
5.0	14	27	41
6.0	11	23	34
7.0	9.7	19	29
8.0	8.5	17	26
9.0	7.6	15	23
10.0	6.8	14	20

Pump Model: 5277982



Available Replacement Parts

Item No	Part Number	Qty	Description
1	5075019	1	Pkg. (4) Grommets
2	5157206	1	15 Amp 'Mini Blade' Fuse
3			
4	5168821	1	Upper Housing w/Pressure Switch
5	20408-000	1	Pkg. (2) Clips (Port Fitting)
6	5157203	1	Pressure Switch Assembly
7	5168824	1	Check Valve w/O-Ring
8	5168826	1	Diaphragm Kit w/Pistons & (4) Screws
9	5168828	1	Cam/Bearing Kit, w/Set Screw
10	5168832	1	Port Kit Fitting, 1/2" MNPT
11	5168833	1	Port Kit Fitting, 1/2" Hose Barb

CAUTION

PRESSURE SWITCH OPERATION
 Pressure switch is pre-set at the factory. Improper adjustment of the pressure switch, may cause severe overload or premature failure. If the pump is subjected to rapid cycling during normal operation, or infrequent periods, damage may occur.

Troubleshooting the Pump:

Motor does not run:

- Check for loose wiring connection(s).
- Make sure the 'ON/OFF' switch on the lead wire assembly is in the 'ON' position. "I" is the 'ON' position
- Check for defective pressure switch. Make sure you are connected to a good 12 volt power source. Make sure your on/off switch is in the 'on' position. Remove the cap to the pressure switch. Pull both red wires off of their terminals, and touch the two ends together. If your pump runs when you do this, your pressure switch will need to be replaced.
- Check the fuse.
- Check for low voltage at the power supply.

Pump does not prime:

- Check for air leaks in supply line.
- Check for debris in the check valve assembly.
- Check for defective check valve.
- Check for clogged strainer/filter.
- Check for cracks in the pump housing.
- Check for empty product supply.

Pulsating flow (surging):

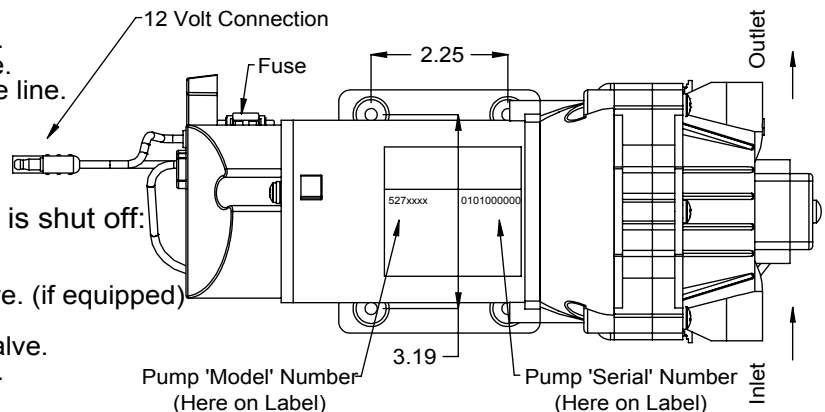
- Check for defective pressure switch.
- Check for leaks in the discharge line.
- Check for restriction in the discharge line.
- Check for debris in nozzle orifice.
- Discharge hose may be too long.
- Check for clogged strainer.

Motor continues to run after discharge is shut off:

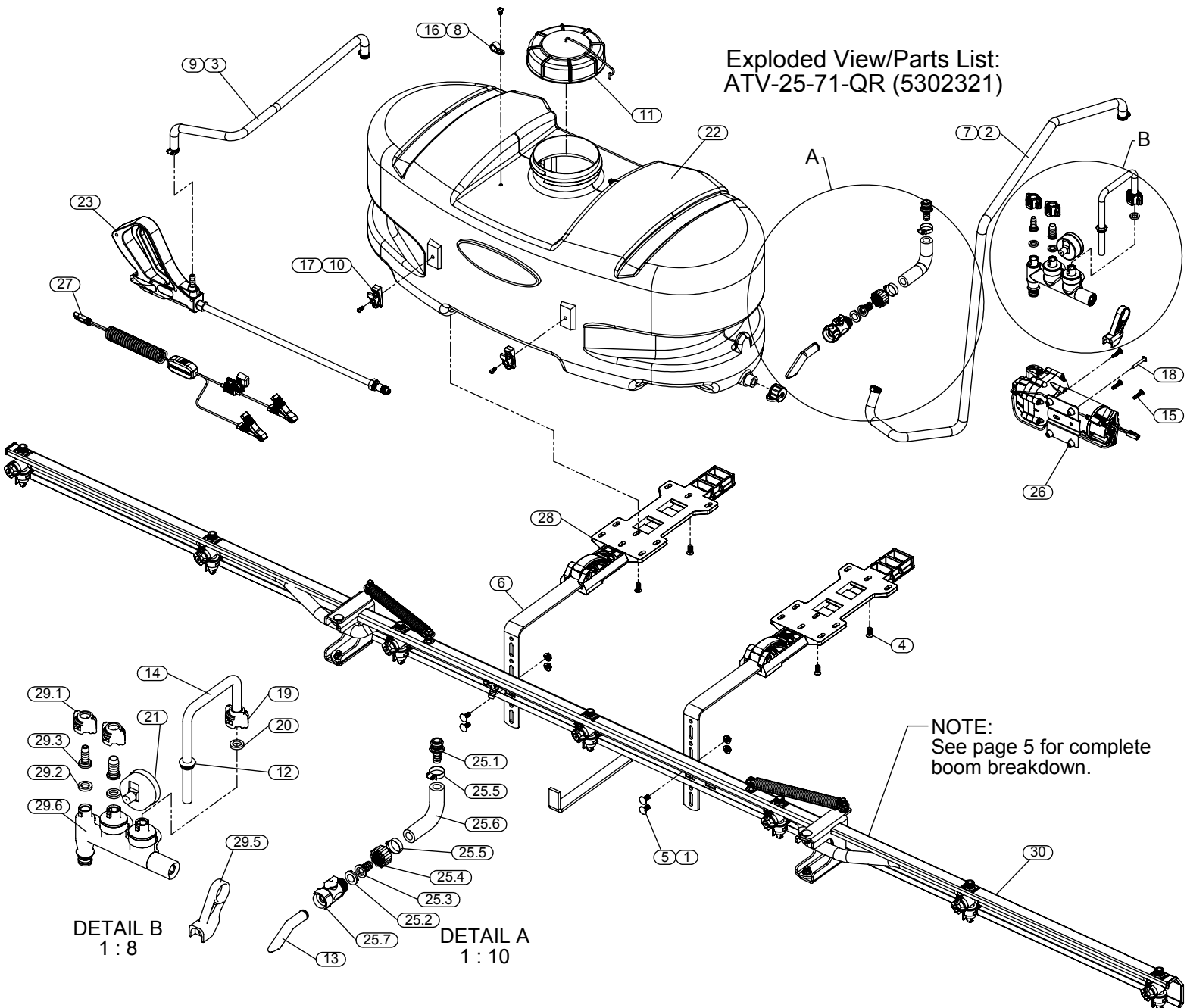
- Check for empty product supply.
- Check for low voltage.
- Check for open pressure adjust valve. (if equipped)
- Check for leak in discharge line.
- Check for defective or dirty check valve.
- Check for defective pressure switch.

Pump Specifications	
Flow Rate:	3.8 GPM @ Open Flow
Current:	7.4 Amps @ 40 PSI
Check Valve:	Viton
Port Type:	Plug-In Port
Motor Voltage:	12 Volts DC
Wetted Parts Housing:	Polypropylene
Diaphragm:	Santoprene
Liquid Temperature:	130° F max.

GPM = Gallons Per Minute
 PSI = Pounds per Square Inch
 DC = Direct Current



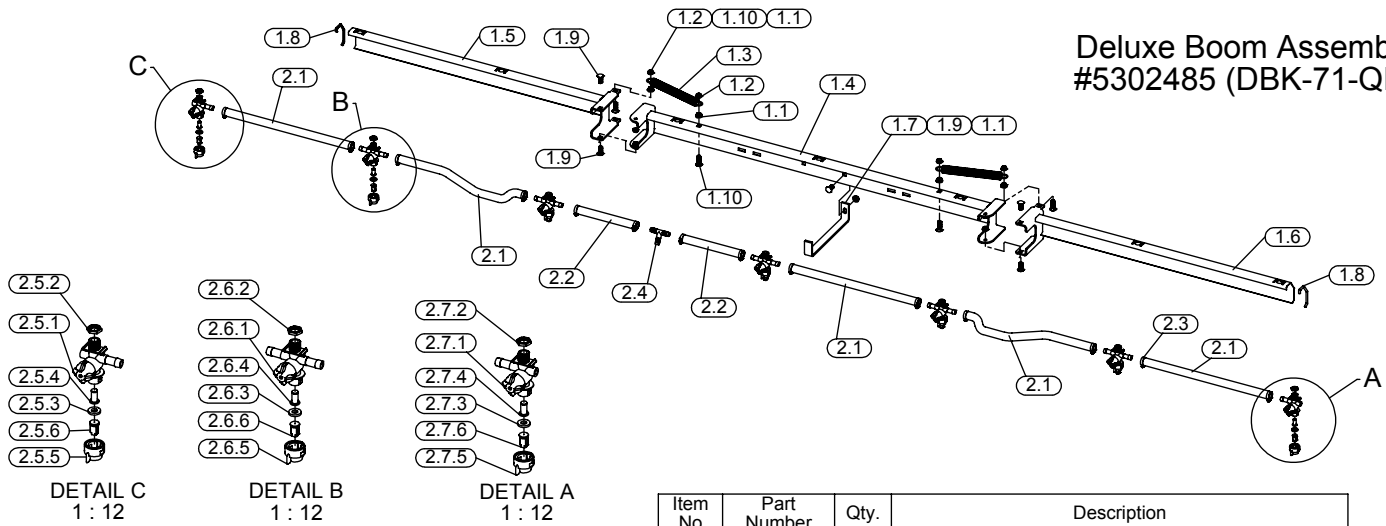
Exploded View/Parts List: ATV-25-71-QR (5302321)



Item No	Part Number	Qty.	Description
1	5006307	4	5/16"-18 Hex Whiz (Flange) Locknut
2	5020122	1	Hose, 1/2"-1 Brd. x 48"
3	5020524	1	Hose, 3/8"-1 Brd. x 15 Ft.
4	5034149	4	Flat Head Screw (100) 5/16-18nc x 3/4"Long W/Locking Patch
5	5034578	4	Carriage Bolt, 5/16"-18 x 3/4" (short neck)
6	5038872	2	Quick Release Bracket - Bent Adjustable Height
7	5051114	2	Hose Clamp (3/8"-1/2")
8	5051122	1	5/8" Black Nylon Loom Cable Clamp
9	5051144	2	Hose Clamp, 3/8"
10	5053112	2	Handgun Clip - Deluxe
11	5058188	1	Tank Lid w/Lanyard
12	5075018	1	Grommet
13	5100452	1	Siphon Tube
14	5100822	1	Rigid By-Pass Tube Assembly (FIMCO 20-25-30 Tanks)-3.8 Pump
15	5117168	3	#10-24 x 1" Phillips Truss Head Machine Screw
16	5117234	1	#10-24 x 1/2" Phillips Truss Head Machine Screw
17	5117334	2	#10-24 x 1/2" Machine Screw, Phillips Round Head
18	5117338	1	#10-24 x 1 1/2 Long Truss Head Machine Screw
19	5143429	1	Quick Connect Manifold - Quick Connect Quarter Turn Cap
20	5143430	1	Quick Connect Manifold - Flat Washer - Hose Barb Seal
21	5167097	1	2" DRY 100# BACK MOUNT GAGE
22	5169243	1	25 Gallon Tank (White/Side-Mount Pump)
23	5273959	1	Deluxe Pistol-Grip Handgun w/X-26 Tip
24	5274373	1	Drain Plug Cap, Tether, and Washer Assembly

Item No	Part Number	Qty.	Description
25	5275877	1	Intake Sub-Assembly
25.1	5168833	1	Port Kit Fitting, 1/2" Hose Barb
25.2	5116242	1	Strainer, 1" Filter Washer
25.3	5149035	1	Poly Swivel, 1/2" Hose Barb
25.4	5006209	1	Poly Knurled Swivel Nut, 3/4" FGHT
25.5	5051114	2	Hose Clamp (3/8"-1/2")
25.6	5020557	1	1/2" Polyspring Hose x 5 1/4"
25.7	5143419	1	Swivel Shut-Off
26	5277982	1	Hi Flo Gold Series 3.8GPM Pump
27	5278114	1	Lead Wire Assembly w/15A Fuse & 30A Clips (96" Long)
28	5278222	2	ATV Quick Release Bracket Assembly
29	5302349	1	QC Manifold Assembly - 3/8 Handgun - 1/2" Boom - ByPass Open
29.1	5143429	2	Quick Connect Manifold - Quick Connect Quarter Turn Cap
29.2	5143430	2	Quick Connect Manifold - Flat Washer - Hose Barb Seal
29.3	5143431	1	Quick Connect Manifold - 3/8" Hose Straight Barb
29.4	5143432	1	Quick Connect Manifold - 1/2" Hose Straight Barb
29.5	5143422	1	Quick Connect Manifold - Support Bracket
29.6	5302347	1	Quick Connect Manifold Assembly - All Ports Open
30	DBK-71-QR (5302485)	1	7-Nozzle Deluxe QR Boom Assembly

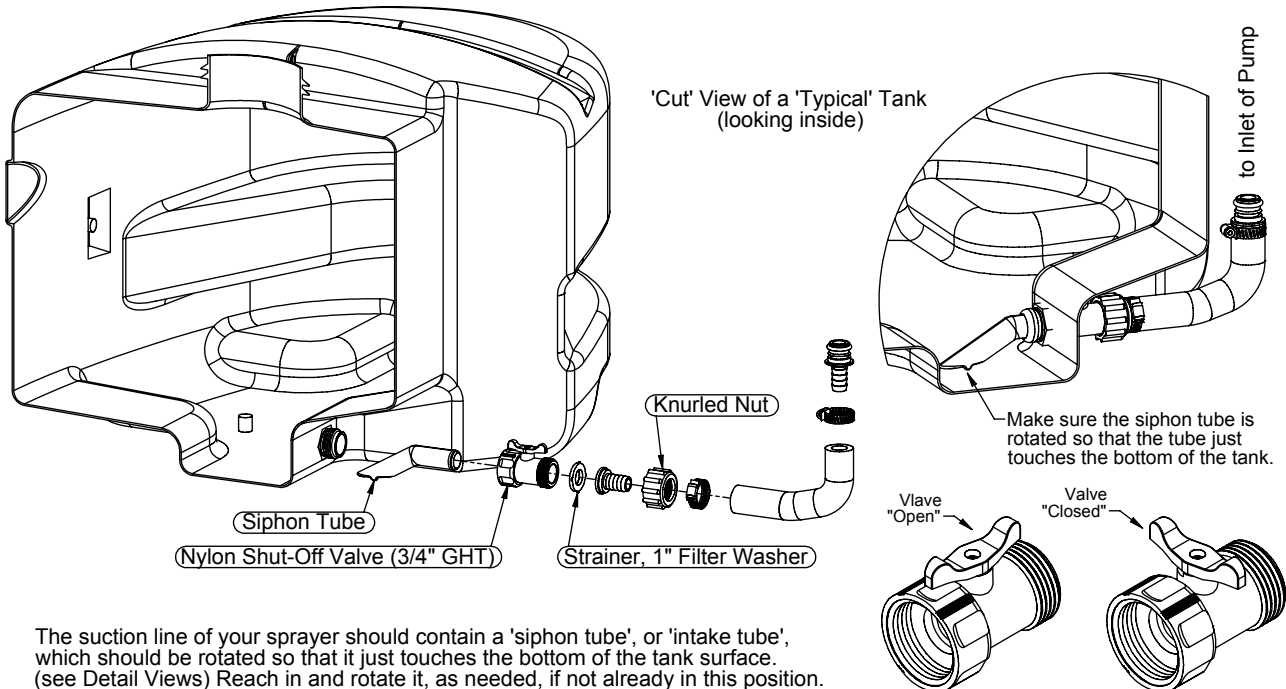
Deluxe Boom Assembly #5302485 (DBK-71-QR)



Item No	Part Number	Qty.	Description
1	5278243	1	Deluxe 7 Row Boom Assembly - For Quick Release
1.1	5006259	5	3/8"-16 Hex Whiz (Flange) Locknut
1.2	5006345	8	3/8"-16 Flange Locknut (Grade F)
1.3	5019228	2	Extension Spring
1.4	5278242	1	Center Boom Weldment - For Quick Release
1.5	5274519	1	Outer Boom Weldment (L.H.)
1.6	5274520	1	Outer Boom Weldment (R.H.)
1.7	5038651	1	Boom Holder Bracket
1.8	5003526	2	Rubber Edge Trim
1.9	5034482	5	3/8"-16nc x 1" Ig Carriage Bolt
1.10	5034524	4	Carriage Bolt, 3/8"-16 x 1 1/4"
2	5277765	1	7-Nozzle Harness Assembly (QJD Nozzles)
2.1	5020416	5	Hose, 1/2"-1 Brd. x 19 3/8"
2.2	5020144	2	Hose, 1/2"-1 Brd. x 10"
2.3	5051114	14	Hose Clamp (3/8"-1/2")
2.4	5086026	1	Poly Hose Tee, 1/2" HB

Item No	Part Number	Qty.	Description
2.5	5277714	1	(LH) Single Deluxe Nozzle Assembly
2.5.1	5002489	1	Quick TeeJet Nozzle, 1/2" Single - Left
2.5.2	5006087	1	Locknut, Brass
2.5.3	5016157	1	Seat Washer (QJ Caps)
2.5.4	5116019	1	Nozzle Strainer, Red (50 Mesh)
2.5.5	5046219	1	Quick TeeJet Cap ONLY (Yellow)
2.5.6	5018371	1	Air-Induction XR Flat Spray Tip (AIXR11002VP)
2.6	5277716	5	Double Deluxe Nozzle Assembly
2.6.1	5002491	1	Quick TeeJet Nozzle, 1/2" Double
2.6.2	5006087	1	Locknut, Brass
2.6.3	5016157	1	Seat Washer (QJ Caps)
2.6.4	5116019	1	Nozzle Strainer, Red (50 Mesh)
2.6.5	5046219	1	Quick TeeJet Cap ONLY (Yellow)
2.6.6	5018371	1	Air-Induction XR Flat Spray Tip (AIXR11002VP)
2.7	5277715	1	(RH) Single Deluxe Nozzle Assembly
2.7.1	5002490	1	Quick TeeJet Nozzle, 1/2" Single - Right
2.7.2	5006087	1	Locknut, Brass
2.7.3	5016157	1	Seat Washer (QJ Caps)
2.7.4	5116019	1	Nozzle Strainer, Red (50 Mesh)
2.7.5	5046219	1	Quick TeeJet Cap ONLY (Yellow)
2.7.6	5018371	1	Air-Induction XR Flat Spray Tip (AIXR11002VP)

Intake/Siphon Tube/Screen Detail of a Typical L&G/ATV Sprayer (not including the 'EC' units)



The suction line of your sprayer should contain a 'siphon tube', or 'intake tube', which should be rotated so that it just touches the bottom of the tank surface. (see Detail Views) Reach in and rotate it, as needed, if not already in this position.

A nylon shut-off valve is threaded onto the pipe nipple, at the intake location on the tank. It is at this location so you can shut off the flow of solution, to access your system's screen, for cleaning.

Checking/Cleaning the sprayer's filter/screen:

- Shut the nylon valve to the 'Closed' position. (lever is perpendicular to the flow of fluid)
- Unscrew the knurled nut from the shut-off valve, leaving the valve connected to the tank.
- Swing (swivel) the intake assembly towards you. Look in the nut you JUST unscrewed. There is a screen/washer there.
- Remove the screen and clean as necessary. Replace when done and reassemble the entire assembly.
- Make sure the valve is turned to the 'Open' position before restarting your pump.

After Spraying

After use, fill the sprayer tank part way with water. Start the sprayer, and allow the clear water to be pumped through the plumbing system and out through the spray nozzles. Refill the tank about half full with plain water and use FIMCO Tank Neutralizer and Cleaner, and repeat cleaning instructions above. Flush the entire sprayer with the neutralizing/cleaning agent, then flush out one more time with plain water. Follow the chemical manufacturer's disposal instructions of all wash or rinsing water. For the boom, (if applicable) remove the tips and screens from the nozzle assemblies. Wash these items out thoroughly. Blow the orifice clean and dry. If the orifice remains clogged, clean it with a fine bristle (NOT WIRE) brush, or with a toothpick. Do not damage the orifice. Water rinse and dry the tips before storing.

WARNING: Some chemicals will damage the pump valves if allowed to soak untreated for a length of time! ALWAYS flush the pump as instructed after each use.

Storing Sprayer

When sprayer is not in use, release Cam Lock Handles. This is to prevent deforming of Cam Lock Mechanism. Do not use QR bracket Cams to hold and store boom in vertical position.

Winter Storage

Drain all water out of your sprayer, paying special attention to the pump, handgun, and valve(s). These items are especially prone to damage from chemicals and freezing weather.

The sprayer should be winterized before storage by pumping a solution of RV antifreeze through the entire plumbing system. This antifreeze solution should remain in the plumbing system during the winter months. When spring time comes and you are preparing your sprayer for the spray season, rinse the entire plumbing system out, clearing the lines of the antifreeze solution. Proper care and maintenance will prolong the life of your sprayer.

NOTES
